



Western Michigan University  
ScholarWorks at WMU

---

Legacy Scout Tickets from Pure Oil Company

---

8-20-2021

**MGRRE\_PureOilScoutTickets\_ELLISON, JOHN  
V\_2\_21011105470000**

MGRRE  
*Western Michigan University*

Follow this and additional works at: <https://scholarworks.wmich.edu/pure>



Part of the Geology Commons

---

#### **WMU ScholarWorks Citation**

MGRRE, "MGRRE\_PureOilScoutTickets\_ELLISON, JOHN V\_2\_21011105470000" (2021). *Legacy Scout Tickets from Pure Oil Company*. 309.  
<https://scholarworks.wmich.edu/pure/309>

This Document is brought to you for free and open access via ScholarWorks at WMU. It has been accepted for inclusion in Legacy Scout Tickets from Pure Oil Company by an authorized administrator of ScholarWorks at WMU. See the National Digital Catalogue - Science Base Catalogue for more collections submitted by MGRRE.



---

**MGRRE\_PureOilScoutTickets\_ELLISON, JOHN V\_2\_21011105470000**

API 21011105470000

Permit Number 10547

Lease Name ELLISON, JOHN V

Well Number 2

County Arenac

Township 19N

Range 3E

Section 27

2021 DEQ or Pure co\_name MAJOR ERVIN

Pure Number 330

Latitude 44.02324

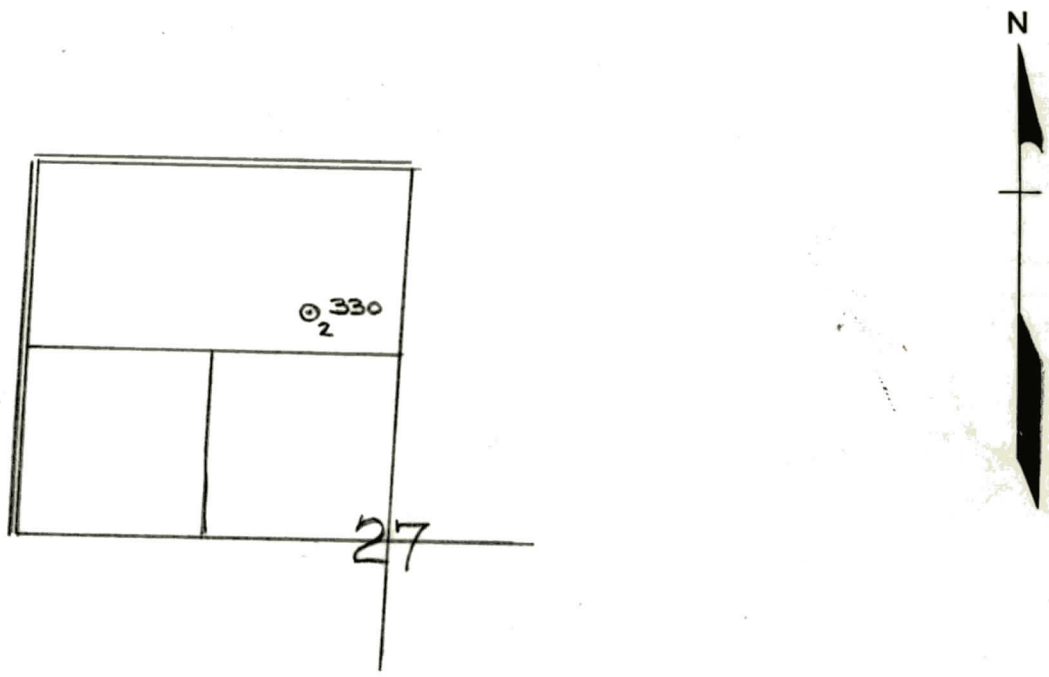
Longitude -84.09836

**THE PURE OIL COMPANY  
LOCATION REPORT**

Date December 15, 1943 A.F.E. No. \_\_\_\_\_  
 Division Mich. Producing District \_\_\_\_\_ Lease John V. Ellison  
 Acres \_\_\_\_\_ Lease No. \_\_\_\_\_ Elevation \_\_\_\_\_ Well No. 2 (Serial No. 330)  
 Quadrangle S<sub>2</sub> NE NW Sec. 27 Twp. 19 N Rge. 3 E ~~28 E~~ ~~29 E~~ Twp. Adams  
 Survey \_\_\_\_\_ County Arenac State Michigan  
 Operator Ervin Major Map Adams Township, Arenac County

		Feet from North Line of Lease	
<u>660</u>	<u>660</u>	" "	East " " "
<u>330</u>	<u>330</u>	" "	South " " "
		" "	West " " "
		Feet from North Line of Section <u>1/4</u>	
<u>990</u>	<u>990</u>	" "	East " " "
<u>660</u>	<u>660</u>	" "	South " " "
		" "	West " " "

- LEGEND**
- Location
  - ☀ Gas Well
  - Oil Well
  - ☀ Gas - Distillate Well
  - or ○ Dry Hole
  - Dry Showing Oil
  - ☀ Dry Showing Gas
  - ⊗ Abandoned Location
  - ☀ or ☀ Abandoned Gas Well
  - or ● Abandoned Oil Well
  - or ○ Input Well



Remarks: \_\_\_\_\_ Scale \_\_\_\_\_

Submitted by RN Civil Engineer Approved by \_\_\_\_\_ Division Manager  
 Approved by \_\_\_\_\_ Vice-President - General Manager

COMPLETION RECORD OF WELLS DRILLED BY OTHER OPERATORS

Michigan Producing Division

Date **July 12, 1944** No. **330**  
 State **Mich.** County **Arenac** Twp. **Adams** Sec. **27** Twp. **19 N** Rge. **3 E**  
 Well No. **2** (Serial No.) **330** Farm **John V. Ellison** Acres \_\_\_\_\_  
 Operator **Ervin Major** Information secured ~~from~~ **By Scouting Department**  
 Date well started **5-18-44** Date well completed **7-7-44** Elevation **797.4**

PRODUCTION BOARD

1st 24 hours natural **Dry Hole**  
 2nd 24 hours natural \_\_\_\_\_  
 Date of shot \_\_\_\_\_ No. of quarts \_\_\_\_\_ From \_\_\_\_\_ to \_\_\_\_\_ From \_\_\_\_\_ to \_\_\_\_\_  
 Date of acid \_\_\_\_\_ No. of gallons \_\_\_\_\_  
 1st 24 hours after acid shot \_\_\_\_\_  
 2nd 24 hours after acid shot \_\_\_\_\_

FORMATION AND CASING RECORD

Formation	Top	Bottom	Top Pay	Bottom Pay	Remarks	Casing	
						Size	Set at
Coldw. Red Rock	1475 (-1474)	1479				10"	257
Sunbury	1570 (-1573)	1585				8-1/4"	590
Berea	1592	(-1797)				6-5/8"	2525
Antrim	1725	(-1928)				5-3/16"	2897-2497
Traverse Form.	2099 (-1302)	S.L.M.					
Traverse Lime	2102 (-1305)	"			O. & G. 2114 SLM - (-1317) 400 ft. oil in 6 hrs.		
Dundee	2882 (-2085)	S.L.M.			S.W. at 2117. (-1320) Rainbow oil 2905-2910. (-2108) S.S.O. 2985-2990; (-2188) Sho oil 2997-3000; (-2200) " " and salt water (-2218) 3010-3020 - 200 ft. salt water 3020-3029. (-2223)		
Total Depth		3050	(-2253)		100' Oil & 350' S.W. at 3035. (-2238)		

Remarks **Flowing salt water at 2240. (-1443)**  
**2100' CTM eq. 2126' SLM; 2890' equals 2897' SLM.**

Signed **D. C. Shackelford**