



Western Michigan University
ScholarWorks at WMU

Legacy Scout Tickets from Pure Oil Company

8-20-2021

**MGRRE_PureOilScoutTickets_KLEIN, ANDREW &
EMMA_1_21011105930000**

MGRRE
Western Michigan University

Follow this and additional works at: <https://scholarworks.wmich.edu/pure>



Part of the Geology Commons

WMU ScholarWorks Citation

MGRRE, "MGRRE_PureOilScoutTickets_KLEIN, ANDREW & EMMA_1_21011105930000" (2021). *Legacy Scout Tickets from Pure Oil Company*. 313.
<https://scholarworks.wmich.edu/pure/313>

This Document is brought to you for free and open access via ScholarWorks at WMU. It has been accepted for inclusion in Legacy Scout Tickets from Pure Oil Company by an authorized administrator of ScholarWorks at WMU. See the National Digital Catalogue - Science Base Catalogue for more collections submitted by MGRRE.



MGRRE_PureOilScoutTickets_KLEIN, ANDREW & EMMA_1_21011105930000

API 21011105930000

Permit Number 10593

Lease Name KLEIN, ANDREW & EMMA

Well Number 1

County Arenac

Township 19N

Range 4E

Section 5

2021 DEQ or Pure co_name MAJOR ERVIN

Pure Number 334

Latitude 44.07038

Longitude -84.01483

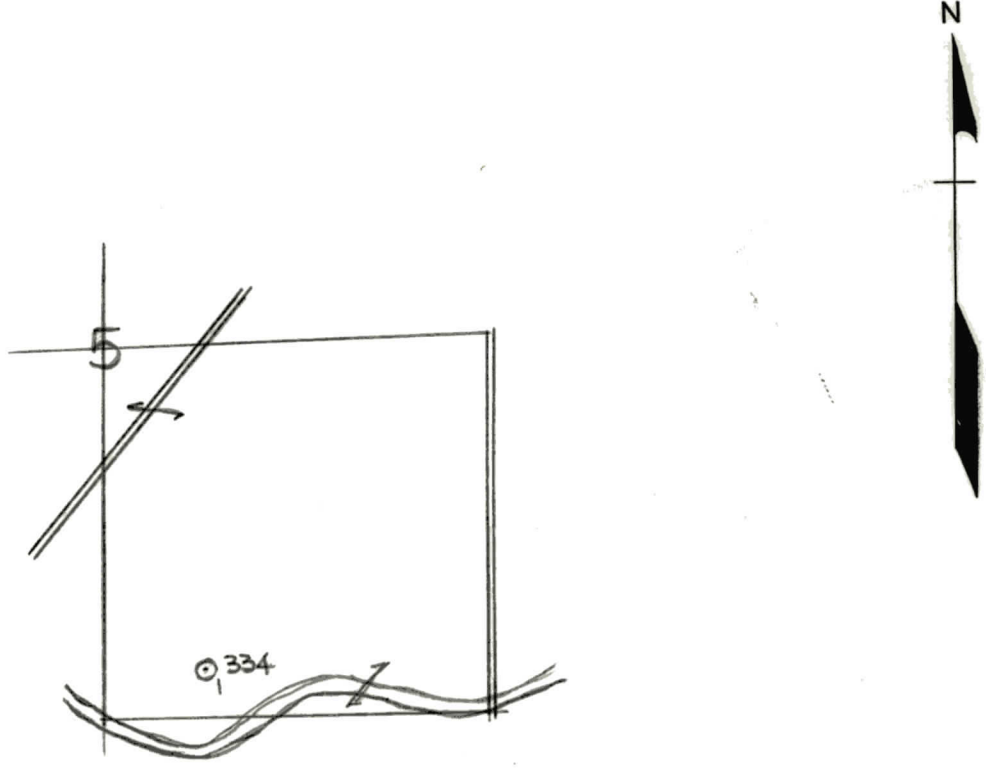
THE PURE OIL COMPANY
LOCATION REPORT

Date January 19, 1944 A.F.E. No. _____
 Division Mich. Producing District _____ Lease Andrew & Emma Klein
 Acres _____ Lease No. _____ Elevation _____ Well No. 1 (Serial No. 334)
 Quadrangle S 1/2 SW SE Sec. 5 Twp. 19 N Rge. 4 E Twp. Deep River
 Survey _____ County Arenac State Michigan
 Operator Ervin Major Map Deep River Township, Arenac Co.

		Feet from North Line of Lease			
		" "	East	" "	" "
<u>330</u>	<u>330</u>	" "	South	" "	" "
<u>660</u>	<u>660</u>	" "	West	" "	" "
		Feet from North Line of Section			
		" "	East	" "	" "
<u>330</u>	<u>330</u>	" "	South	" "	<u>1/4</u>
<u>660</u>	<u>660</u>	" "	West	" "	" "

LEGEND

Gas Well	Location
Oil Well	Dry Showing Gas
Gas - Distillate Well	Abandoned Location
or Dry Hole	or Abandoned Gas Well
Dry Showing Oil	or Abandoned Oil Well
	or Input Well



Remarks: _____

Submitted by RN Civil Engineer Approved by _____ Division Manager

Approved by _____ Vice-President - General Manager

The Pure Oil Company
COMPLETION RECORD OF WELLS DRILLED BY OTHER OPERATORS

Michigan Producing Division

Date March 22, 1944 No. 334
 State Mich. County Arenac ~~Risk~~ Twp. Deep River Sec. 5 Twp. 19 N Rge. 4 E
 Well No. 1 (Serial No.) ~~(County No.)~~ 334 Farm Andrew & Emma Klein Acres _____
 Operator Ervin Major By _____ Information secured ~~from~~ Scouting Department
 Date well started 2-7-44 Date well completed 3-16-44 Elevation 665.5

PRODUCTION BOARD

1st 24 hours natural Dry Hole
 2nd 24 hours natural _____
 Date of shot _____ No. of quarts _____ From _____ to _____ From _____ to _____
 Date of acid _____ No. of gallons _____
 shot _____
 1st 24 hours after acid _____
 shot _____
 2nd 24 hours after acid _____

FORMATION AND CASING RECORD

Formation	Top	Bottom	Top Pay	Bottom Pay	Remarks	Casing	
						Size	Set at
Marshall		360			Flo. fresh water at 125. Water 407-414.	10"	107
Coldw. Red Rock	1225	1235	Log			8-1/4"	458
Sunbury	1370	Log				6-5/8"	2350
Berea	1390	"			Small show oil-gas 1390-1402. 2 ba. salt water/hr. 1435.	5-3/16" Liner	2701-2286
Antrim	1540	Log					
Traverse Lime	1906	"			40 ba. salt water in 8 hrs. 1922. H.F.S.W. 2197-2200. Flo. salt water 2208.		
Dundee	2705	S.L.M.			Small show black oil 2860-2864; 2 ba. S.W./hr. 2920-2940; 3 ba. S.W./hr. from 3090-3114.		
Total Depth		3120					

Remarks 2343' CTM equals 2337' S.O.M.; 2692' CTM equals 2689' SLM.

Signed D. C. Shackelford