



Western Michigan University
ScholarWorks at WMU

Legacy Color Lithology Strip Logs

5-16-2022

MGRRE_LithStripLog_Emerly Brothers 1_21069004579000

MGRRE Western Michigan University

Follow this and additional works at: <https://scholarworks.wmich.edu/lith>



Part of the Geology Commons

WMU ScholarWorks Citation

Western Michigan University, MGRRE, "MGRRE_LithStripLog_Emerly Brothers 1_21069004579000" (2022).
Legacy Color Lithology Strip Logs. 322.

<https://scholarworks.wmich.edu/lith/322>

This Document is brought to you for free and open access by ScholarWorks at WMU. It has been accepted for inclusion in Legacy Color Lithology Strip Logs by an authorized administrator of ScholarWorks at WMU. For more information, please contact wmu-scholarworks@wmich.edu.



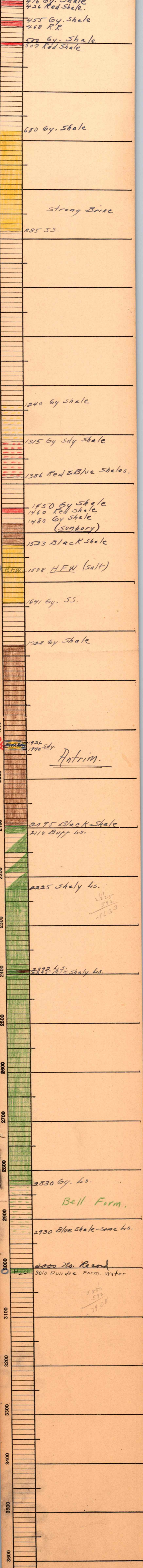
MAP ST. **Tosco Co.**
 COUNTY **Mich.** COMPANY **Tosco Oil Co.**
 FARM **Emery Bros.** WELL NO. **1**
 T. **22N** R. **7E** CONTRACTOR
 COMMENCED **PT#457**
 COMPLETED
 REMARKS
 ALTITUDE **592** **300 W - 200 S**
 PRODUCTION **D. & A.**

CASING RECORD

	10"
	8 1/4" 900
20"	6 3/8" 1660
15 1/2"	5 1/16"
12 1/2"	

SHOT QUARTS BETWEEN

FORM 186 - For Sale by Mid-Continent Printing Co., Tulsa



$$\begin{array}{r} 2225 \\ 592 \\ \hline 1633 \end{array}$$

$$\begin{array}{r} 3000 \\ 592 \\ \hline 2408 \end{array}$$