



Western Michigan University  
ScholarWorks at WMU

---

Legacy Color Lithology Strip Logs

---

5-16-2022

**MGRRE\_LithStripLog\_CROWELL 1\_21073005860000**

MGRRE Western Michigan University

Follow this and additional works at: <https://scholarworks.wmich.edu/lith>



Part of the Geology Commons

---

#### **WMU ScholarWorks Citation**

Western Michigan University, MGRRE, "MGRRE\_LithStripLog\_CROWELL 1\_21073005860000" (2022).

*Legacy Color Lithology Strip Logs*. 330.

<https://scholarworks.wmich.edu/lith/330>

This Document is brought to you for free and open access by ScholarWorks at WMU. It has been accepted for inclusion in Legacy Color Lithology Strip Logs by an authorized administrator of ScholarWorks at WMU. For more information, please contact [wmu-scholarworks@wmich.edu](mailto:wmu-scholarworks@wmich.edu).





P#586

Isabella Co

MAP S1

COUNTY

T. R.

ALTITUDE 745

PRODUCTION

COMPANY Holsinger & Jordan

FARM Crowell

WELL NO. 1

CONTRACTOR

COMMENCED

COMPLETED

REMARKS

5-14N-2W

300 feet + 300 feet

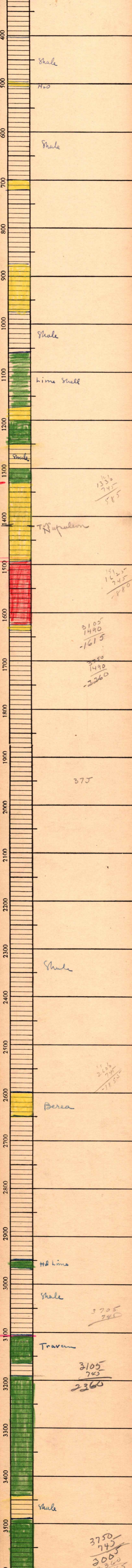
N.W.

CASING RECORD

	10"
	8 1/4"
20"	6 3/8"
15 1/2"	5 1/16"
12 1/2"	

SHOT QUARTS BETWEEN

FORM 186 For Sale by M. Printing Co., Tulsa



$$\begin{array}{r} 1330 \\ 745 \\ \hline 585 \end{array}$$

$$\begin{array}{r} 15125 \\ 745 \\ \hline 1880 \end{array}$$

$$\begin{array}{r} 3105 \\ 1490 \\ \hline 1615 \end{array}$$

$$\begin{array}{r} 3750 \\ 1490 \\ \hline 2260 \end{array}$$

$$\begin{array}{r} 2600 \\ 745 \\ \hline 1855 \end{array}$$

$$\begin{array}{r} 3750 \\ 745 \\ \hline 3005 \\ 2360 \\ \hline 645 \end{array}$$

to shale 3750 Top Dunbar  
Total Depth 3859  
Water