



Western Michigan University
ScholarWorks at WMU

Legacy Scout Tickets from Pure Oil Company

8-20-2021

MGRRE_PureOilScoutTickets_CONSUMERS POWERS COMPANY_1_21011114980000

MGRRE
Western Michigan University

Follow this and additional works at: <https://scholarworks.wmich.edu/pure>



Part of the Geology Commons

WMU ScholarWorks Citation

MGRRE, "MGRRE_PureOilScoutTickets_CONSUMERS POWERS COMPANY_1_21011114980000" (2021).
Legacy Scout Tickets from Pure Oil Company. 406.
<https://scholarworks.wmich.edu/pure/406>

This Document is brought to you for free and open access via ScholarWorks at WMU. It has been accepted for inclusion in Legacy Scout Tickets from Pure Oil Company by an authorized administrator of ScholarWorks at WMU. See the National Digital Catalogue - Science Base Catalogue for more collections submitted by MGRRE.



**MGRRE_PureOilScoutTickets_CONSUMERS POWERS
COMPANY_1_21011114980000**

API 21011114980000

Permit Number 11498

Lease Name CONSUMERS POWERS COMPANY

Well Number 1

County Arenac

Township 20N

Range 3E

Section 23

2021 DEQ or Pure co_name RAYBURN DON F

Pure Number 428

Latitude 44.12601

Longitude -84.07597

THE PURE OIL COMPANY

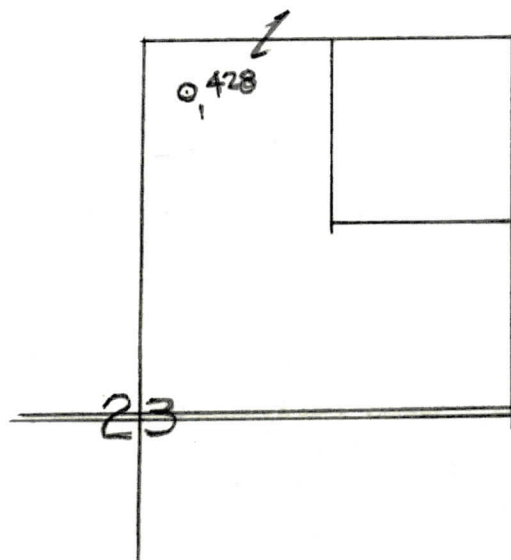
LOCATION REPORT

Date April 25, 1945 A.F.E. No. _____
 Division Mich. Producing District _____ Lease Consumers Power Co.
Consumers Power Co.
 Acres _____ Lease No. _____ Elevation _____ Well No. 1 (Serial No. 428)
 Quadrangle NW NW NE Sec. 23 Twp. 20 N Rge. 3 E Twp. Moffatt
 Survey _____ County Arenac State Michigan
 Operator Don Rayburn Map Moffatt Township, Arenac Co.

330 330 Feet from North Line of Lease
 " " East " " "
 " " South " " "
330 330 " " West " 1/4 "
330 330 Feet from North Line of Section
 " " East " " "
 " " South " " "
330 330 " " West " " "

LEGEND

- Location
- ☼ Gas Well
 ● Oil Well
 ☼ Gas - Distillate Well
 ☼ or ○ Dry Hole
 ● Dry Showing Oil
- ☼ Dry Showing Gas
 ○ Abandoned Location
 ☼ or ☼ Abandoned Gas Well
 ● or ● Abandoned Oil Well
 ● or ○ Input Well



N

Remarks: _____

Scale _____

Submitted by RN Civil Engineer Approved by _____ Division Manager
 Approved by _____ Vice-President - General Manager

Signed **D. C. Shackelford**