



Western Michigan University  
ScholarWorks at WMU

---

Legacy Color Lithology Strip Logs

---

5-16-2022

**MGRRE\_LithStripLog\_Kalamazoo 1\_21077003729000**

MGRRE Western Michigan University

Follow this and additional works at: <https://scholarworks.wmich.edu/lith>



Part of the Geology Commons

---

#### **WMU ScholarWorks Citation**

Western Michigan University, MGRRE, "MGRRE\_LithStripLog\_Kalamazoo 1\_21077003729000" (2022).

*Legacy Color Lithology Strip Logs*. 422.

<https://scholarworks.wmich.edu/lith/422>

This Document is brought to you for free and open access by ScholarWorks at WMU. It has been accepted for inclusion in Legacy Color Lithology Strip Logs by an authorized administrator of ScholarWorks at WMU. For more information, please contact [wmu-scholarworks@wmich.edu](mailto:wmu-scholarworks@wmich.edu).

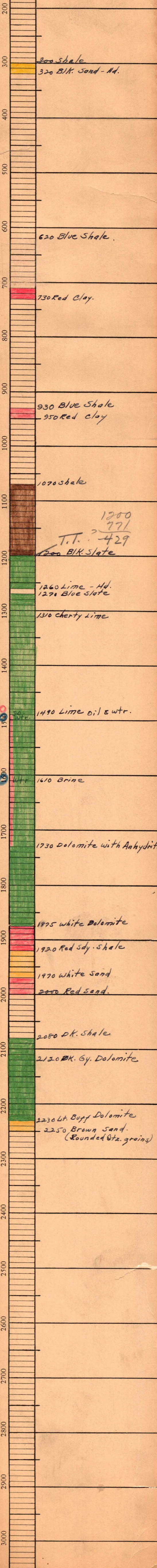


MAP I **Kalamazoo Co.**  
 STATE **Mich.** COMPANY **Kalamazoo Natl Gas Co.**  
 COUNTY \_\_\_\_\_ FARM **Kalamazoo** WELL NO. **1**  
 T. **25** R. **11W** CONTRACTOR \_\_\_\_\_  
 COMMENCED \_\_\_\_\_  
 COMPLETED \_\_\_\_\_  
 REMARKS **p# 372**  
 ALTITUDE **771**  
 PRODUCTION \_\_\_\_\_

CASING RECORD

	10"	
	8 1/4"	
20"	6 5/8"	
15 1/2"	5 1/16"	
12 1/2"	<i>4" punch</i>	
SHOT	QUARTS	BETWEEN

FORM 186 - For Sale by **M** \_\_\_\_\_ Printing Co., Tulsa



1200  
 771  
 T.T. ? 429  
 1200 B/K. Slate