



Western Michigan University  
ScholarWorks at WMU

---

Legacy Scout Tickets from Pure Oil Company

---

8-20-2021

MGRRE\_PureOilScoutTickets\_CASEBEER, J L\_1\_21011116400000

MGRRE

*Western Michigan University*

Follow this and additional works at: <https://scholarworks.wmich.edu/pure>



Part of the Geology Commons

---

#### WMU ScholarWorks Citation

MGRRE, "MGRRE\_PureOilScoutTickets\_CASEBEER, J L\_1\_21011116400000" (2021). *Legacy Scout Tickets from Pure Oil Company*. 422.

<https://scholarworks.wmich.edu/pure/422>

This Document is brought to you for free and open access via ScholarWorks at WMU. It has been accepted for inclusion in Legacy Scout Tickets from Pure Oil Company by an authorized administrator of ScholarWorks at WMU. See the National Digital Catalogue - Science Base Catalogue for more collections submitted by MGRRE.



---

**MGRRE\_PureOilScoutTickets\_CASEBEER, J L\_1\_21011116400000**

API 21011116400000

Permit Number 11640

Lease Name CASEBEER, J L

Well Number 1

County Arenac

Township 19N

Range 4E

Section 15

2021 DEQ or Pure co\_name WALTON H E AND STEWART WILLIAM B

Pure Number 444

Latitude 44.04856

Longitude -83.98109

## THE PURE OIL COMPANY

## LOCATION REPORT

Date June 27, 1945

A.F.E. No. \_\_\_\_\_

Division Mich. Producing

District \_\_\_\_\_

Lease J. L. CasebeerAcres \_\_\_\_\_ Lease No. \_\_\_\_\_ Elevation \_\_\_\_\_ Well No. 1 (Serial No. 444)Quadrangle SW SE NW Sec. 15 Twp. 19 N Rge. 4 E Twp. Deep RiverSurvey \_\_\_\_\_ County Arenac State MichiganOperator H. E. Walton & Wm. B. Stewart Map Deep River Township, Arenac County

Feet from North Line of Lease

330	330	"	"	East	"	"	"
330	330	"	"	South	"	"	"
		"	"	West	"	"	"

Feet from North Line of Section

990	990	"	"	East	"	"	"
330	330	"	"	South	"	"	"
		"	"	West	"	"	"

## LEGEND

○ Location



Gas Well



Oil Well



Gas-Distillate Well



Dry Hole



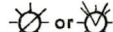
Dry Showing Oil



Dry Showing Gas



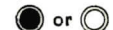
Abandoned Location



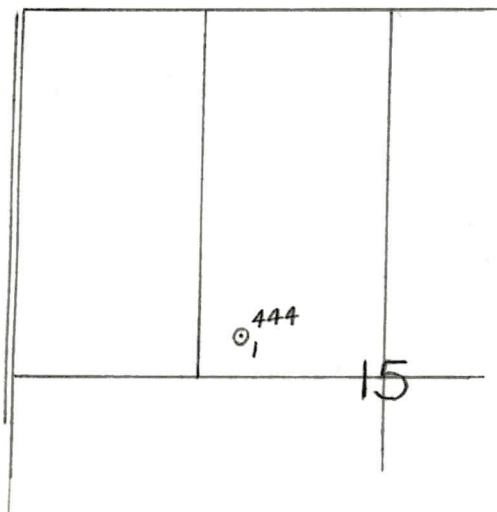
Abandoned Gas Well



Abandoned Oil Well



Input Well



N

Remarks: \_\_\_\_\_

Scale \_\_\_\_\_

Submitted by \_\_\_\_\_

Civil Engineer

Approved by \_\_\_\_\_

Division Manager

Approved by \_\_\_\_\_

Vice-President - General Manager

1509 wown  
8 1/4" sp 6-20-45  
10" DP 175  
4m 280-365

