



Western Michigan University  
ScholarWorks at WMU

---

Legacy Scout Tickets from Pure Oil Company

---

8-20-2021

**MGRRE\_PureOilScoutTickets\_Ames - Good\_1\_21011112430000**

MGRRE

*Western Michigan University*

Follow this and additional works at: <https://scholarworks.wmich.edu/pure>



Part of the Geology Commons

---

#### WMU ScholarWorks Citation

MGRRE, "MGRRE\_PureOilScoutTickets\_Ames - Good\_1\_21011112430000" (2021). *Legacy Scout Tickets from Pure Oil Company*. 446.

<https://scholarworks.wmich.edu/pure/446>

This Document is brought to you for free and open access via ScholarWorks at WMU. It has been accepted for inclusion in Legacy Scout Tickets from Pure Oil Company by an authorized administrator of ScholarWorks at WMU. See the National Digital Catalogue - Science Base Catalogue for more collections submitted by MGRRE.





---

**MGRRE\_PureOilScoutTickets\_Ames - Good\_1\_21011112430000**

API 21011112430000

Permit Number 11243

Lease Name Ames - Good

Well Number 1

County Arenac

Township 19N

Range 4E

Section 22

2021 DEQ or Pure co\_name Higginbotham & King Drilling Co.

Pure Number 468

Latitude 44.0395

Longitude -83.97345



## THE PURE OIL COMPANY

## LOCATION REPORT

Date September 26, 1945

A.F.E. No. \_\_\_\_\_

Division Mich. Producing

District \_\_\_\_\_

Lease Ames-Good

Acres \_\_\_\_\_ Lease No. \_\_\_\_\_

Elevation \_\_\_\_\_

Well No. 1(Serial No. 468)Quadrangle NE-NW-NESec. 22Twp. 19 NRge. 4 ETwp. DEEP RIVER  
Deep RiverSurvey \_\_\_\_\_ County ArenacState MichiganOperator Higginbotham & King Drilling Co.Map Deep River Township, Arenac County330 330 Feet from North Line of Lease330 330 " " East " " "330 330 " " South " " "330 330 " " West " " "330 330 Feet from North Line of Section330 330 " " East " " "330 330 " " South " " "990 990 " " West " " "

## LEGEND

○ Location

☀ Gas Well

● Oil Well

☀ Gas-Distillate Well

○ or ○ Dry Hole

● Dry Showing Oil

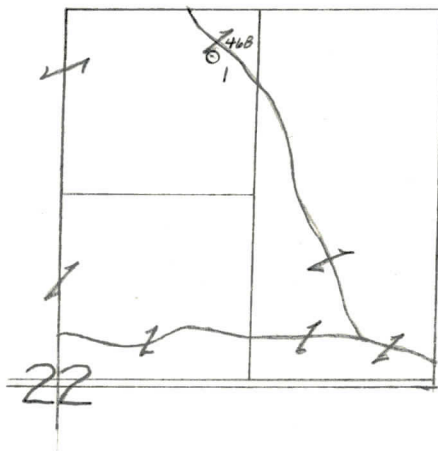
☀ Dry Showing Gas

○ Abandoned Location

☀ or ☀ Abandoned Gas Well

● or ● Abandoned Oil Well

● or ○ Input Well



N

Remarks: \_\_\_\_\_

Scale \_\_\_\_\_

Submitted by \_\_\_\_\_

Civil Engineer

Approved by \_\_\_\_\_

Division Manager

Approved by \_\_\_\_\_

Vice-President - General Manager



