



Western Michigan University  
ScholarWorks at WMU

---

Legacy Scout Tickets from Pure Oil Company

---

8-20-2021

MGRRE\_PureOilScoutTickets\_BUKOWSKI,  
THERESA\_2\_21011118740000

MGRRE  
*Western Michigan University*

Follow this and additional works at: <https://scholarworks.wmich.edu/pure>



Part of the Geology Commons

---

#### WMU ScholarWorks Citation

MGRRE, "MGRRE\_PureOilScoutTickets\_BUKOWSKI, THERESA\_2\_21011118740000" (2021). *Legacy Scout Tickets from Pure Oil Company*. 451.  
<https://scholarworks.wmich.edu/pure/451>

This Document is brought to you for free and open access via ScholarWorks at WMU. It has been accepted for inclusion in Legacy Scout Tickets from Pure Oil Company by an authorized administrator of ScholarWorks at WMU. See the National Digital Catalogue - Science Base Catalogue for more collections submitted by MGRRE.



---

MGRRE\_PureOilScoutTickets\_BUKOWSKI, THERESA\_2\_21011118740000

API 21011118740000

Permit Number 11874

Lease Name BUKOWSKI, THERESA

Well Number 2

County Arenac

Township 19N

Range 4E

Section 14

2021 DEQ or Pure co\_name MAJOR ERVIN

Pure Number 473

Latitude 44.04671

Longitude -83.96103

The Pure Oil Company

## THE PURE OIL COMPANY

## LOCATION REPORT

Date October 3, 1945

A.F.E. No. \_\_\_\_\_

Division Mich. Producing District \_\_\_\_\_Lease Theresa Bukowski  
2 473Acres \_\_\_\_\_ Lease No. 14 Elevation \_\_\_\_\_ Well No. 2 (Serial No. 473)Quadrangle NW-NE-SW Sec. 14 Twp. 19 N Rge. 4 E Twp. Deep River  
ARENACSurvey \_\_\_\_\_ County Arenac State MichiganOperator Ervin Major Map Deep River Township, Arenac County

Feet from North Line of Lease

<u>990</u>	<u>990</u>	"	"	East	"	"	"
<u>330</u>	<u>330</u>	"	"	South	"	"	"
<u>330</u>	<u>330</u>	"	"	West	"	"	"
<u>990</u>	<u>990</u>	Feet from North Line of Section					
		"	"	East	"	"	"
		"	"	South	"	"	"
		"	"	West	"	"	"

## LEGEND

○ Location

☼ Gas Well

● Oil Well

☼ Gas - Distillate Well

○ or ○ Dry Hole

● Dry Showing Oil

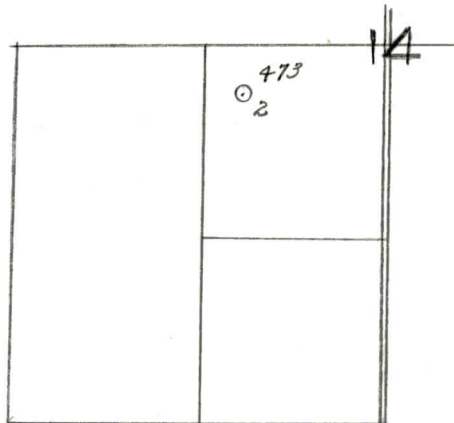
☼ Dry Showing Gas

☼ Abandoned Location

☼ or ☼ Abandoned Gas Well

● or ● Abandoned Oil Well

● or ○ Input Well



Scale \_\_\_\_\_

Remarks: \_\_\_\_\_

Submitted by \_\_\_\_\_ Civil Engineer

Approved by \_\_\_\_\_ Division Manager

Approved by \_\_\_\_\_ Vice-President - General Manager



Date October 3, 1945

LOCATION RECORD  
THE LUBE OIL COMPANY

WELL NO.

COMPLETION RECORD OF WELLS DRILLED BY OTHER OPERATORS

Michigan Producing Division

Date November 28, 1945

No. 473

State Michigan Co. Arenac Twp. Deep River Sec. 14 Twp. 19 N Rge. 4 E

Well No. 2 Serial No. 473 Farm Theresa Bukowski Acres

Operator Ervin Major

Date started 10-12-45 Date completed 11-21-45 Elevation 714.0

PRODUCTION RECORD

1st 24 hours natural

Date of shot No. of quarts From To From to

Date of acid No. of gallons shot

1st 24 hours after acid

Completed as: Oil Well Gas Well Dry Hole X

FORMATION AND CASING RECORD

Formation	Top	Bottom	Top Pay	Bottom Pay	Remarks	Casing	
						Size	Set at
Marshall	305	419	(+409)			10"	124
Coldw. Red Rock	1330	1331	(-616)			8-1/4"	550
Sunbury	1526	S.O.M.	(-812)			6-5/8"	2508
Berea	1555	"	(-841)		24 ba. salt water in 8 hrs. at 1600.	5" Liner	2883
Antrim	1715	(-1001)	s			(-886)	
Traverse Lime	2065	G.T.M.	(-1351)	s	Flo. salt water 2455-2460.	(-1741)	
Dundee	2883	S.O.M.	(-2169)		Small show free oil 100 ft. salt water	2901.	(-2187)
Total Depth		3096	(-2382)			3091-3096.	(-2377)

Remarks 1538' equals 1554' S.O.M.; 1965' equals 1960' S.L.M.; 2864' equals 2883' S.O.M.

Signed D. C. Shackelford