



Western Michigan University
ScholarWorks at WMU

Legacy Scout Tickets from Pure Oil Company

8-20-2021

**MGRRE_PureOilScoutTickets_BRADLEY, N B & SONS TRUST ET
AL_1_21011118940000**

MGRRE
Western Michigan University

Follow this and additional works at: <https://scholarworks.wmich.edu/pure>



Part of the Geology Commons

WMU ScholarWorks Citation

MGRRE, "MGRRE_PureOilScoutTickets_BRADLEY, N B & SONS TRUST ET AL_1_21011118940000" (2021).
Legacy Scout Tickets from Pure Oil Company. 455.
<https://scholarworks.wmich.edu/pure/455>

This Document is brought to you for free and open access via ScholarWorks at WMU. It has been accepted for inclusion in Legacy Scout Tickets from Pure Oil Company by an authorized administrator of ScholarWorks at WMU. See the National Digital Catalogue - Science Base Catalogue for more collections submitted by MGRRE.



**MGRRE_PureOilScoutTickets_BRADLEY, N B & SONS TRUST ET
AL_1_21011118940000**

API 21011118940000

Permit Number 11894

Lease Name BRADLEY, N B & SONS TRUST ET AL

Well Number 1

County Arenac

Township 19N

Range 4E

Section 23

2021 DEQ or Pure co_name LEASE MANAGEMENT INC

Pure Number 477

Latitude 44.0394193

Longitude -83.9560525

WELL REPORT - OUTSIDE OPERATIONS

SERIAL NO. 477STATE Michigan ~~PSH~~ CO. ArenacOPERATOR Michigan Oil Co.FARM N.B. Bradley & Sons Trust et al WELL NO. 1TWP. SURVEY Deep River S. 23 T. 19N R. 4ELOC. NW NW NEWILDCAT ☐ FIELD ☐ FIELD NAME _____

MAP NO. _____ CO-ORD. _____ ELEV. _____

STATUS _____

Correcting operators name from American Drilling
Co. and Michigan Oil Company

NORTH

DATE 3-10-48 SCOUT HJG

THE PURE OIL COMPANY

LOCATION REPORT

Date October 17, 1945

A.F.E. No. N.B. Bradley & Sons Trust et al

Division Mich. Producing District _____

Lease N. B. Bradley & Sons Trust, et al

Acres NW-NW-NE Lease No. 23 Elevation 19N Well No. 1 (Serial No. 477)

Quadrangle NW NW NE Sec. 23 Twp. 19 N Rge. 4 E Twp. Deep River

Survey Am. Dril'g. Co. & Mich. Oil Co. County Arenac State Michigan

Operator American Drilling Co. & Mich. Oil Co. Map Deep River Township, Arenac County

<u>330</u>	<u>330</u>	Feet from North Line of Lease
		" " East " " "
		" " South " " "
<u>330</u>	<u>330</u>	" " West " " "
<u>330</u>	<u>330</u>	Feet from North Line of Section
		" " East " " "
		" " South " " "
<u>330</u>	<u>330</u>	" " West " " "

LEGEND

○ Location

☼ Gas Well

● Oil Well

☼ Gas - Distillate Well

○ or ○ Dry Hole

● Dry Showing Oil

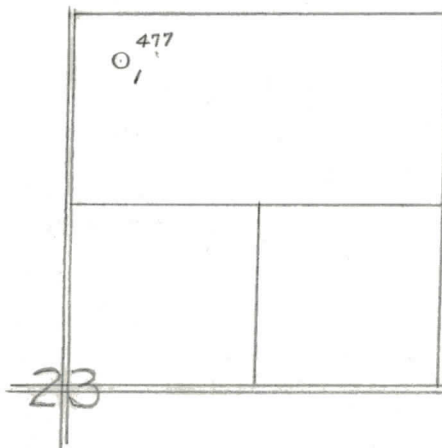
☼ Dry Showing Gas

○ Abandoned Location

☼ or ☼ Abandoned Gas Well

● or ● Abandoned Oil Well

● or ○ Input Well



N

Remarks: _____ Scale _____

Submitted by _____ Civil Engineer

Approved by _____ Division Manager

Approved by _____ Vice-President - General Manager

