



Western Michigan University
ScholarWorks at WMU

Legacy Scout Tickets from Pure Oil Company

8-20-2021

MGRRE_PureOilScoutTickets_CASEBEER, J L_2_21011119070000

MGRRE

Western Michigan University

Follow this and additional works at: <https://scholarworks.wmich.edu/pure>



Part of the Geology Commons

WMU ScholarWorks Citation

MGRRE, "MGRRE_PureOilScoutTickets_CASEBEER, J L_2_21011119070000" (2021). *Legacy Scout Tickets from Pure Oil Company*. 457.

<https://scholarworks.wmich.edu/pure/457>

This Document is brought to you for free and open access via ScholarWorks at WMU. It has been accepted for inclusion in Legacy Scout Tickets from Pure Oil Company by an authorized administrator of ScholarWorks at WMU. See the National Digital Catalogue - Science Base Catalogue for more collections submitted by MGRRE.



MGRRE_PureOilScoutTickets_CASEBEER, J L_2_21011119070000

API 21011119070000

Permit Number 11907

Lease Name CASEBEER, J L

Well Number 2

County Arenac

Township 19N

Range 4E

Section 15

2021 DEQ or Pure co_name WALTON H E AND STEWART WILLIAM B

Pure Number 479

Latitude 44.04855

Longitude -83.97858

THE PURE OIL COMPANY

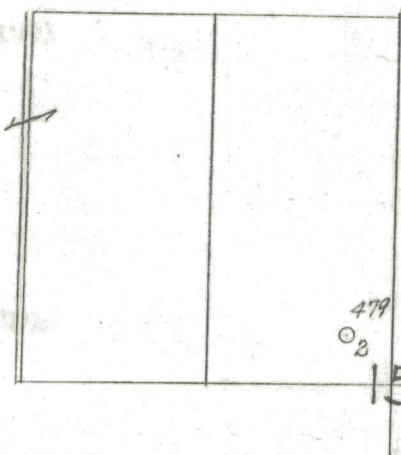
LOCATION REPORT

Date October 17, 1945 A.F.E. No. J. L. Casebeer
 Division Mich. Producing District J. L. Casebeer Lease 2
 Acres SE-SE-NW Lease No. 15 Elevation 19N Well No. 2 (Serial No. 479)
 Quadrangle SE SE NW Sec. 15 Twp. 19 N Rge. 4 E Deep River
 Survey H. E. Walton & Wm. B. Stewart County Arenac State Michigan
 Operator H. E. Walton & Wm. B. Stewart Map Deep River Township, Arenac County

		Feet from North Line of Lease			
<u>330</u>	<u>330</u>	"	"	East	" " "
<u>330</u>	<u>330</u>	"	"	South	" " "
		"	"	West	" " "
		Feet from North Line of Section			
<u>330</u>	<u>330</u>	"	"	East	" <u>1 1/4</u> "
<u>330</u>	<u>330</u>	"	"	South	" " "
		"	"	West	" " "

LEGEND

- Location
- ☼ Gas Well ☼ Dry Showing Gas
- Oil Well ☼ Abandoned Location
- ☼ Gas - Distillate Well ☼ or ☼ Abandoned Gas Well
- or ○ Dry Hole ● or ● Abandoned Oil Well
- Dry Showing Oil ● or ○ Input Well



Remarks: _____

Scale _____

Submitted by _____ Civil Engineer Approved by _____ Division Manager

Approved by _____ Vice-President-General Manager

THE LUBE OIL COMPANY

The Pure Oil Company

COMPLETION RECORD OF WELLS DRILLED BY OTHER OPERATORS

Michigan Producing Division

Date **November 28, 1945**

No. 479

State **Michigan** Co. **Arenac** Twp. **Deep River** Sec. **15** Twp. **19 N** Rge. **4 E**

Well No. **2** Serial No. **479** Farm **J. L. Casebeer** Acres

Operator H. E. Walton and Wm. B. Stewart

Date started **10-11-45** Date completed **11-19-45** Elevation **744.0**

PRODUCTION RECORD

1st 24 hours natural

Date of shot	No. of quarts	From	To	From	to
--------------	------------------	------	----	------	----

Date of acid	No. of gallons
shot	

1st 24 hours after acid

Completed as: Oil Well Gas Well Dry Hole ☒

FORMATION AND CASING RECORD

Formation	Top	Bottom	Top Pay	Bottom Pay	Remarks	Casing	
						Size	Set at
Marshall	280	405	(+464)			10"	107
Sunbury	1466	(1-722)				8-1/4"	512
Berea	1495	(1-751)				6-5/8"	2457
Antrim	1650	1991	(1-906)			5" Liner	2817
Traverse Lime	2012	(1-1268)			Flowing salt wtr. 2393 to 2396. .	(1-1649)	
Dundee	2817	(1-2073)			No showings of oil, gas, or salt water.		
Total Depth		2894	(1-2150)				

Remarks

Signed **D. C. Shackelford**