



Western Michigan University  
ScholarWorks at WMU

---

Legacy Scout Tickets from Pure Oil Company

---

8-20-2021

**MGRRE\_PureOilScoutTickets\_CHARCHAN, JOHN &  
JULIA\_1\_21011119530000**

MGRRE  
*Western Michigan University*

Follow this and additional works at: <https://scholarworks.wmich.edu/pure>



Part of the Geology Commons

---

#### WMU ScholarWorks Citation

MGRRE, "MGRRE\_PureOilScoutTickets\_CHARCHAN, JOHN & JULIA\_1\_21011119530000" (2021). *Legacy Scout Tickets from Pure Oil Company*. 463.  
<https://scholarworks.wmich.edu/pure/463>

This Document is brought to you for free and open access via ScholarWorks at WMU. It has been accepted for inclusion in Legacy Scout Tickets from Pure Oil Company by an authorized administrator of ScholarWorks at WMU. See the National Digital Catalogue - Science Base Catalogue for more collections submitted by MGRRE.



---

**MGRRE\_PureOilScoutTickets\_CHARCHAN, JOHN & JULIA\_1\_21011119530000**

API 21011119530000

Permit Number 11953

Lease Name CHARCHAN, JOHN & JULIA

Well Number 1

County Arenac

Township 19N

Range 4E

Section 23

2021 DEQ or Pure co\_name GORDON OIL CO

Pure Number 485

Latitude 44.0395

Longitude -83.9584

## WELL REPORT - OUTSIDE OPERATIONS 557-564

SERIAL NO. 485-517

STATE Michigan ~~JPM~~ CO. ArenacOPERATOR The Gordon Oil Co.FARM John & Julia Charchan WELL NO. 1-2-3-4TWP. Deep River S. 23 T. 19N R. 4E  
~~SURVEY~~

LOC. \_\_\_\_\_

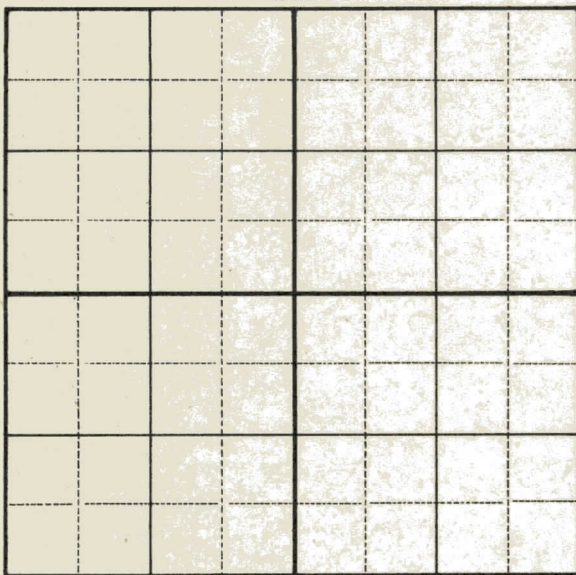
WILDCAT ☐ FIELD ☐ FIELD NAME \_\_\_\_\_

MAP NO. \_\_\_\_\_ CO-ORD. \_\_\_\_\_ ELEV. \_\_\_\_\_

STATUS \_\_\_\_\_

Operator's name corrected from:  
Ervin Major

NORTH

DATE 8-4-53 SCOUT JEC

RECEIVED NOV 10 1945

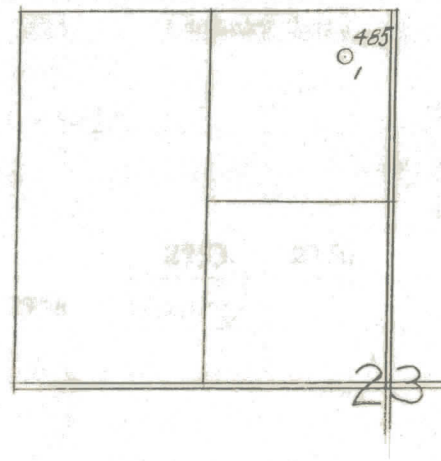
# THE PURE OIL COMPANY

Date November 7, 1945 LOCATION REPORT A.F.E. No. John & Julia Charchan  
Division Mich. Producing District \_\_\_\_\_ Lease John & Julia Charchan  
Acres \_\_\_\_\_ Lease No. 23 Elevation 19N Well No. 1 (Serial No. 485)  
Quadrangle NE NE NW Sec. 23 Twp. 19 N Rge. 4 E ~~Deep River~~ Deep River  
Survey \_\_\_\_\_ County Arenac State Michigan  
Operator Ervin Major Map Deep River Township, Arenac County

330	330	Feet from North Line of Lease
330	330	" " East " " "
		" " South " " "
		" " West " " "
330	330	Feet from North Line of Section
330	330	" " East " " "
		" " South " " "
		" " West " " "

1285  
11-2-45  
10" at 108  
300-335

- LEGEND
- Location
  - ☼ Gas Well
  - Oil Well
  - ☼ Gas - Distillate Well
  - or ○ Dry Hole
  - Dry Showing Oil
  - ☼ Dry Showing Gas
  - ⊗ Abandoned Location
  - ☼ or ☼ Abandoned Gas Well
  - or ● Abandoned Oil Well
  - ⊗ or ⊗ Input Well



Remarks: \_\_\_\_\_

Submitted by CB Civil Engineer Approved by \_\_\_\_\_ Division Manager

Approved by \_\_\_\_\_ Vice-President-General Manager



DS46

2046061 J' Jdt 2

## LOCATION REPORT

A. F. F. MO.

## COMPLETION RECORD OF WELLS DRILLED BY OTHER OPERATORS

Michigan Producing Division

Date **December 19, 1945**

No. 485

State **Michigan** Co. **Arenac**

**DyStoX**

Twp. •

## Deep River

Sec. 23

Twp. 19 N

Rge 4 E

Well No. 1 Serial No 485

Farm

**J. & J. Charchan**

Acres

Operator **Ervin Major**

Date started **11-2-45**

Date completed . 12-15-45

Elevation 672.9

# PRODUCTION RECORD

1st 24 hours natural      Estimated potential - 4,560 Bbls.

Date of shot	No. of quarts	From	To	From	to
--------------	------------------	------	----	------	----

Date of acid ..... No. of gallons  
shot

1st 24 hours after acid

Completed as:	Oil Well	Gas Well	Dry Hole
---------------	----------	----------	----------

# FORMATION AND CASING RECORD

Formation	Top	Bottom	Top Pay	Bottom Pay	Remarks	Casing	
						Size	Set at
Marshall (4373)	300	335	(Rotary Log)			10"	108
Traverse Lime	1962	(-1289)				5-3/16"	2742
Dundee	2742	(-2069)			Show oil & gas (-2069) 2742-2743; 500 ft.		
					oil in hole in 16 hrs. at 2753. (-2080)		
			2753	2756	(-2080)		
Total Depth		2756	(-2083)				

Remarks

Signed D. C. Shackelford