



Western Michigan University
ScholarWorks at WMU

Legacy Scout Tickets from Pure Oil Company

8-20-2021

**MGRRE_PureOilScoutTickets_BRADLEY, N B & SONS TRUST, ET
AL_3_21011119710000**

MGRRE
Western Michigan University

Follow this and additional works at: <https://scholarworks.wmich.edu/pure>



Part of the Geology Commons

WMU ScholarWorks Citation

MGRRE, "MGRRE_PureOilScoutTickets_BRADLEY, N B & SONS TRUST, ET AL_3_21011119710000" (2021).
Legacy Scout Tickets from Pure Oil Company. 469.
<https://scholarworks.wmich.edu/pure/469>

This Document is brought to you for free and open access via ScholarWorks at WMU. It has been accepted for inclusion in Legacy Scout Tickets from Pure Oil Company by an authorized administrator of ScholarWorks at WMU. See the National Digital Catalogue - Science Base Catalogue for more collections submitted by MGRRE.



MGRRE_PureOilScoutTickets_BRADLEY, N B & SONS TRUST, ET
AL_3_21011119710000

API 21011119710000

Permit Number 11971

Lease Name BRADLEY, N B & SONS TRUST, ET AL

Well Number 3

County Arenac

Township 19N

Range 4E

Section 23

2021 DEQ or Pure co_name LEASE MANAGEMENT INC

Pure Number 491

Latitude 44.0377

Longitude -83.95337

WELL REPORT - OUTSIDE OPERATIONS

SERIAL NO. 491

STATE Michigan PSH CO. Arenac

OPERATOR Michigan Oil Company

FARM N.B. Bradley & Sons Trust, et al WELL NO. 3

TWP. Deep River S. 23 T. 19N R. 4E

LOC. SE NW NE

WILDCAT ☐ FIELD ☐ FIELD NAME _____

MAP NO. _____ CO-ORD. _____ ELEV. _____

STATUS _____

Correcting operators name from American Drilling
Company & Michigan Oil Co.

NORTH

DATE 3-10-48 SCOUT HJC

THE PURE OIL COMPANY LOCATION REPORT

Date November 7, 1945Division Mich. Producing

District _____

Lease _____

A.F.E. No. _____

N.B. Bradley & Sons Trust, et al
N.B. Bradley & Sons Trust, et al
 3 491

Acres _____

Lease No. _____

Elevation _____

Well No. 3(Serial No. 491)Quadrangle SE NW NESec. 23Twp. 19 NRge. 4 E

~~Box~~
~~Dist~~
 Twp. Deep River

Deep River
Deep River

Survey Am. Drilg. & Mich. Oil Co.County ArenacState MichiganOperator American Drilg. Co. & Mich. Oil Co.Map Deep River Township, Arenac County

Feet from North Line of Lease

330 330 " " East " " "
990 990 " " South " " "
 " " West " " "

Feet from North Line of Section

330 330 " " East " " "
990 990 " " South 1/4 "
 " " West " " "

LEGEND

○ Location

☼ Gas Well

● Oil Well

☼ Gas - Distillate Well

○ or ○ Dry Hole

● Dry Showing Oil

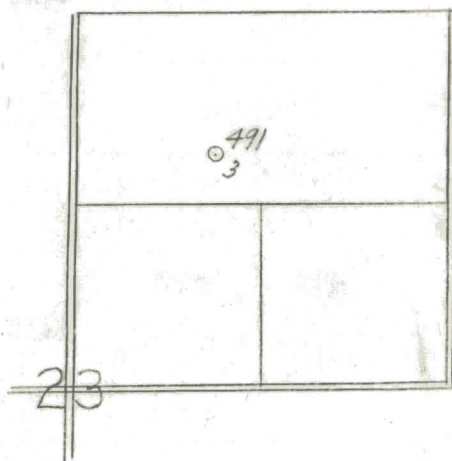
☼ Dry Showing Gas

○ Abandoned Location

☼ or ☼ Abandoned Gas Well

● or ● Abandoned Oil Well

○ or ○ Input Well



Remarks: _____

Scale _____

Submitted by CB

Civil Engineer

Approved by _____

Division Manager

Approved by _____

Vice-President-General Manager

Signed **D. C. Shackelford**