



Western Michigan University  
ScholarWorks at WMU

---

Legacy Color Lithology Strip Logs

---

5-16-2022

**MGRRE\_LithStripLog\_BEAL, CHARLES H & CHARLES A  
GG-1\_21091232760000**

MGRRE Western Michigan University

Follow this and additional works at: <https://scholarworks.wmich.edu/lith>



Part of the Geology Commons

---

#### **WMU ScholarWorks Citation**

Western Michigan University, MGRRE, "MGRRE\_LithStripLog\_BEAL, CHARLES H & CHARLES A GG-1\_21091232760000" (2022). *Legacy Color Lithology Strip Logs*. 477.

<https://scholarworks.wmich.edu/lith/477>

This Document is brought to you for free and open access by ScholarWorks at WMU. It has been accepted for inclusion in Legacy Color Lithology Strip Logs by an authorized administrator of ScholarWorks at WMU. For more information, please contact [wmu-scholarworks@wmich.edu](mailto:wmu-scholarworks@wmich.edu).



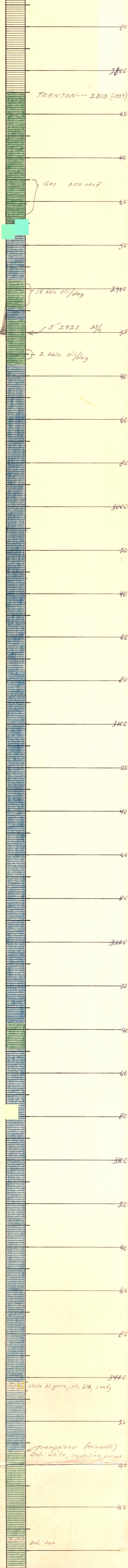
PD 23276

STATE <b>MICH</b>	Good & Good	
COUNTY <b>LENAWEE</b>	D-19. Co.	
BLOCK <b>Medina</b>	FARM <b>Beal</b>	WELL NO. <b>66-1</b>
SEC. <b>3</b>	SURVEY <b>NE NW SW 3, 85-1E</b>	
T. <b>85</b>	R. <b>1E</b>	TOTAL DEPTH <b>3487</b>
CONTRACTOR <b>Good &amp; Good</b>		
COMMENCED <b>6-16-61</b>		
COMPLETED <b>9-4-61</b>		
REMARKS		
ALTITUDE <b>853 RF</b>		
PRODUCTION		

CASING RECORD

	10"	193'
	8 1/2"	1010'
20"	6 3/4"	2070
15 1/2"	5 1/2"	2921
12 1/2"		
SHOT	QUARTS	BETWEEN

FORM 394 - For sale by Ross-Martin Co., Tulsa



TD 3487  
 All samples run wet  
 corrected to S.J. 2.00  
 3500