



Western Michigan University  
ScholarWorks at WMU

---

Legacy Scout Tickets from Pure Oil Company

---

8-20-2021

**MGRRE\_PureOilScoutTickets\_BENSINGER, THOMAS &  
MARIE\_1\_21011120580000**

MGRRE  
*Western Michigan University*

Follow this and additional works at: <https://scholarworks.wmich.edu/pure>



Part of the Geology Commons

---

#### WMU ScholarWorks Citation

MGRRE, "MGRRE\_PureOilScoutTickets\_BENSINGER, THOMAS & MARIE\_1\_21011120580000" (2021).  
*Legacy Scout Tickets from Pure Oil Company*. 493.  
<https://scholarworks.wmich.edu/pure/493>

This Document is brought to you for free and open access via ScholarWorks at WMU. It has been accepted for inclusion in Legacy Scout Tickets from Pure Oil Company by an authorized administrator of ScholarWorks at WMU. See the National Digital Catalogue - Science Base Catalogue for more collections submitted by MGRRE.



---

**MGRRE\_PureOilScoutTickets\_BENSINGER, THOMAS &  
MARIE\_1\_21011120580000**

API 21011120580000

Permit Number 12058

Lease Name BENSINGER, THOMAS & MARIE

Well Number 1

County Arenac

Township 19N

Range 4E

Section 23

2021 DEQ or Pure co\_name LEASE MANAGEMENT INC

Pure Number 515

Latitude 44.0395684

Longitude -83.9635354

## WELL REPORT - OUTSIDE OPERATIONS

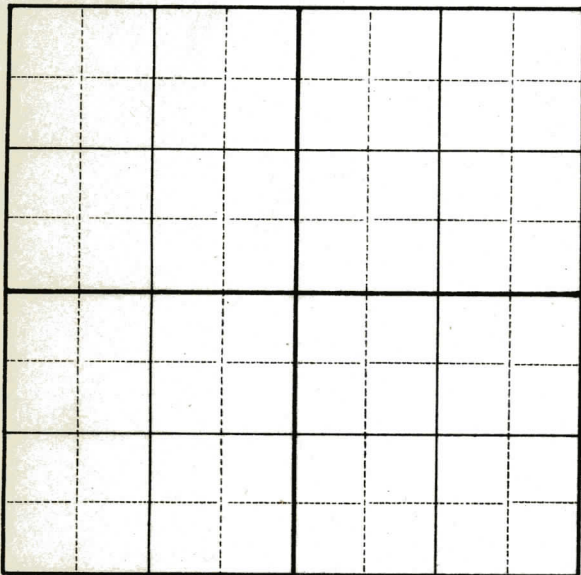
SERIAL NO. 515STATE Michigan <sup>65M</sup>CO. ArenacOPERATOR The Gordon Oil Co.FARM Thomas & Marie Bensinger WELL NO. 1TWP. Deep River S. 23 T. 19N R. 4ELOC. NE NW NWWILDCAT ☐ FIELD ☐ FIELD NAME \_\_\_\_\_

MAP NO. \_\_\_\_\_ CO-ORD. \_\_\_\_\_ ELEV. \_\_\_\_\_

STATUS \_\_\_\_\_

Operator's name corrected from:  
Ervin Major

NORTH

DATE 8-4-53 SCOUT JEC

# THE PURE OIL COMPANY

## LOCATION REPORT

Date December 29, 1945

A.F.E. No. \_\_\_\_\_

Division Mich. Producing District \_\_\_\_\_

Lease Thomas & Marie Bensinger  
Thomas & Marie Bensinger

Acres \_\_\_\_\_ Lease No. \_\_\_\_\_ Elevation \_\_\_\_\_ Well No. 1 (Serial No. 515)

Quadrangle NE-NW-NW Sec. 23 Twp. 19 N Rge. 4 E Deep River  
NE NW NW Sec. 23 Twp. 19 N Rge. 4 E Deep River

Survey \_\_\_\_\_ County Arenac State Michigan

Operator Ervin Major Map Deep River Township, Arenac County

330 330 Feet from North Line of Lease  
330 330 " " East " " "  
" " South " " "  
" " West " " "  
330 330 Feet from North Line of Section 1/4  
" " East " " "  
" " South " " "  
990 990 " " West " " "

### LEGEND

○ Location

☼ Gas Well

● Oil Well

☼ Gas - Distillate Well

○ or ○ Dry Hole

● Dry Showing Oil

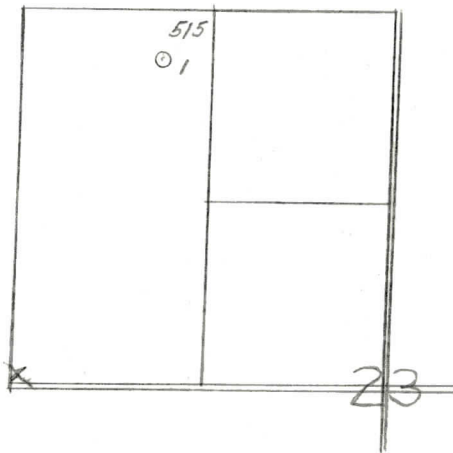
☼ Dry Showing Gas

○ Abandoned Location

☼ or ☼ Abandoned Gas Well

● or ● Abandoned Oil Well

● or ○ Input Well



Scale \_\_\_\_\_

Remarks: \_\_\_\_\_

Submitted by CB Civil Engineer

Approved by \_\_\_\_\_ Division Manager

Approved by \_\_\_\_\_ Vice-President - General Manager



Michigan Producing Division

No. 515

**Wissenschaft**

NE-NW-NW

Twp. Deep River

Sec. 23

Twp. 19 N Rge. 4 E

Well No. 1 Serial No. 515

Farm **T. & M. Bensinger**

Acres

Operator **Ervin Major**

Date started 2-6-46

Date completed . 2-25-46

Elevation 687.7

1st 24 hours natural      Estimated potential - 3840 Bbls.

Date of shot	No. of quarts	From	To	From	to
--------------	------------------	------	----	------	----

Date of acid..... No. of gallons

shot  
1st 24 hours after acid

Completed as:      Oil Well      **X**      Gas Well      Dry Hole

[illegible]

Remarks	Rotary Hole.
---------	--------------

Signed D. C. Shackelford