



Western Michigan University
ScholarWorks at WMU

Legacy Scout Tickets from Pure Oil Company

8-20-2021

**MGRRE_PureOilScoutTickets_BENSINGER, THOMAS &
MARIE_A-1_21011120590000**

MGRRE
Western Michigan University

Follow this and additional works at: <https://scholarworks.wmich.edu/pure>



Part of the Geology Commons

WMU ScholarWorks Citation

MGRRE, "MGRRE_PureOilScoutTickets_BENSINGER, THOMAS & MARIE_A-1_21011120590000" (2021).
Legacy Scout Tickets from Pure Oil Company. 494.
<https://scholarworks.wmich.edu/pure/494>

This Document is brought to you for free and open access via ScholarWorks at WMU. It has been accepted for inclusion in Legacy Scout Tickets from Pure Oil Company by an authorized administrator of ScholarWorks at WMU. See the National Digital Catalogue - Science Base Catalogue for more collections submitted by MGRRE.



**MGRRE_PureOilScoutTickets_BENSINGER, THOMAS &
MARIE_A-1_21011120590000**

API 21011120590000

Permit Number 12059

Lease Name BENSINGER, THOMAS & MARIE

Well Number A-1

County Arenac

Township 19N

Range 4E

Section 23

2021 DEQ or Pure co_name LEASE MANAGEMENT INC

Pure Number 516

Latitude 44.03948

Longitude -83.96589

THE PURE OIL COMPANY

LOCATION REPORT

Date December 29, 1945

A.F.E. No. _____

Division Mich. Producing District _____

Lease Thos. & Marie Bensinger
Thos. & Marie Bensinger

Acres _____ Lease No. _____ Elevation _____ Well No. A-1 (Serial No. 516)

Quadrangle NW-NW-NW Sec. 23 Twp. 19 N Rge. 4 E ~~Dist.~~ Deep River
NW NW NW Sec. 23 Twp. 19 N Rge. 4 E Twp. Deep River

Survey _____ County Arenac State Michigan

Operator Ervin Major Map Deep River Township, Arenac County
330 330

Feet from North Line of Lease

" " East " " "

" " South " " "

330 330 " " West " " "

330 330 Feet from North Line of Section

" " East " " "

" " South " " "

330 330 " " West " " "

LEGEND

○ Location

☀ Gas Well

● Oil Well

☀ Gas - Distillate Well

○ or ○ Dry Hole

● Dry Showing Oil

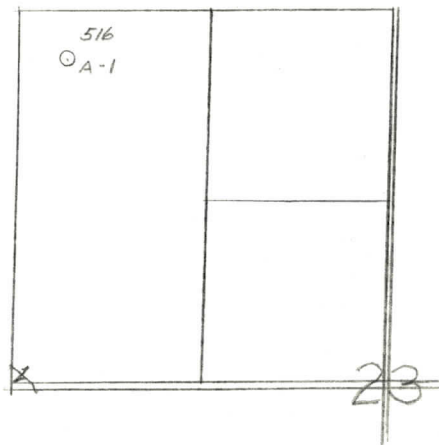
☀ Dry Showing Gas

⊗ Abandoned Location

☀ or ☀ Abandoned Gas Well

● or ● Abandoned Oil Well

● or ○ Input Well



Scale _____

Remarks: _____

Submitted by CB

Civil Engineer

Approved by _____ Division Manager

Approved by _____ Vice-President - General Manager

THE PURE OIL COMPANY
COMPLETION RECORD OF WELLS DRILLED BY OTHER OPERATORS

Michigan Producing

Division

Date June 19, 1946 No. 516
 State Michigan Co. Arenac DIST. Deep River Twp. 19 N Sec. 23 Rge. 4 E
 Well No. A-1 Serial No. 516 Farm Thos. & Marie Bensinger Acres _____
 Operator Ervin Major
 Date started 5-10-46 Date completed 6-8-46 Elevation 697.4

PRODUCTION RECORD

1st 24 hours natural _____
 Date of shot _____ No. of quarts _____ From _____ To _____ From _____ To _____
 Date of acid _____ No. of gallons _____ shot _____
 1st 24 hours after acid _____
 Completed as: Oil Well _____ Gas Well _____ Dry Hole X

FORMATION AND CASING RECORD

Formation	Top	Bottom	Top Pay	Bottom Pay	Remarks	Casing	
						Size	Set at
Marshall	250	390	(+447)			10"	70
Sunbury	1464	(-767)				8-1/4"	561
Berea	1498	(-801)				6-5/8"	2508
Antrim	1653	(-956)				5" Liner	2809
Traverse Lime	2004	(-1307)			Flo. salt water 2370-2395. (-1673)		
Dundee	2809	(-2112)			No showings of oil, gas, or water in the Dundee.		
Total Depth		2870	(-2173)				

Remarks 2190' equals 2187' C.D.M.

DD OWDD - For SWD - Comp. 5-14-48 NYTD-2975 - Not Reported to Chicago
 (746)

Signed D. C. Shackelford