



Western Michigan University
ScholarWorks at WMU

Legacy Scout Tickets from Pure Oil Company

8-20-2021

**MGRRE_PureOilScoutTickets_BRADLEY, N B & SONS TRUST ET
AL_5_21011120730000**

MGRRE
Western Michigan University

Follow this and additional works at: <https://scholarworks.wmich.edu/pure>



Part of the Geology Commons

WMU ScholarWorks Citation

MGRRE, "MGRRE_PureOilScoutTickets_BRADLEY, N B & SONS TRUST ET AL_5_21011120730000" (2021).
Legacy Scout Tickets from Pure Oil Company. 498.
<https://scholarworks.wmich.edu/pure/498>

This Document is brought to you for free and open access via ScholarWorks at WMU. It has been accepted for inclusion in Legacy Scout Tickets from Pure Oil Company by an authorized administrator of ScholarWorks at WMU. See the National Digital Catalogue - Science Base Catalogue for more collections submitted by MGRRE.



**MGRRE_PureOilScoutTickets_BRADLEY, N B & SONS TRUST ET
AL_5_21011120730000**

API 21011120730000

Permit Number 12073

Lease Name BRADLEY, N B & SONS TRUST ET AL

Well Number 5

County Arenac

Township 19N

Range 4E

Section 23

2021 DEQ or Pure co_name MICHIGAN OIL CO

Pure Number 520

Latitude 44.03952

Longitude -83.95091

Form 21- WELL REPORT - OUTSIDE OPERATIONS

SERIAL NO. 520STATE Michigan POH Arenac
CO.OPERATOR Michigan Oil Co.FARM N.B. Bradley & Sons Trust, etal WELL NO. 5TWP. Deep River S. 23 T. 19N R. 4E
SURVEYLOC. NW NE NEWILDCAT ☐ FIELD ☐ FIELD NAME _____

MAP NO. _____ CO-ORD. _____ ELEV. _____

STATUS _____

Correcting operators name from American Drilling
Co. & Michigan Oil Co.

NORTH

DATE 3-10-48 SCOUT HJG

THE PURE OIL COMPANY

LOCATION REPORT

Date January 9, 1946

A.F.E. No. N.B. Bradley & Sons Trust, et al

Division Mich. Producing District _____

Lease N. B. Bradley & Sons Trust, et al

Acres _____ Lease No. _____ Elevation _____ Well No. 5 (Serial No. 520)

Quadrangle NW-NE-NE Sec. 23 Twp. 19 N Rge. 4 E Deep River Deep River

Survey _____ County Arenac State Michigan

Operator American Drilling Co. & Michigan Oil Co. Map Deep River Township, Arenac County

330 330 Feet from North Line of Lease

990 990 " " East " " "

" " South " " "

" " West " " "

330 330 Feet from North Line of Section

990 990 " " East " " "

" " South " " "

" " West " " "

Low

LEGEND

○ Location

☀ Gas Well

● Oil Well

☀ Gas - Distillate Well

○ or ○ Dry Hole

● Dry Showing Oil

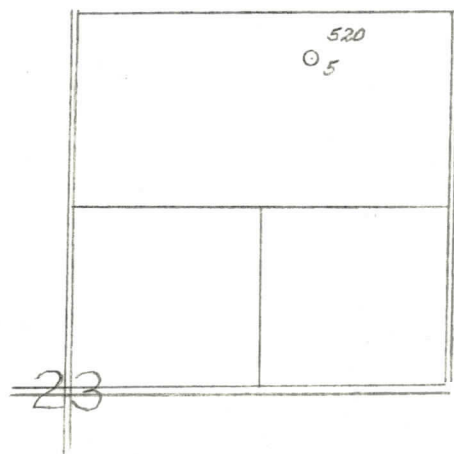
☀ Dry Showing Gas

○ Abandoned Location

☀ or ☀ Abandoned Gas Well

● or ● Abandoned Oil Well

● or ○ Input Well



Scale _____

Remarks: _____

Submitted by CB Civil Engineer

Approved by _____ Division Manager

Approved by _____ Vice-President - General Manager

COMPLETION RECORD OF WELLS DRILLED BY OTHER OPERATORS

Michigan Producing Division

Date March 13, 1946 No. 520
 State Mich. Co. Arenac ~~Substax~~ Twp. Deep River Sec. 23 Twp. 19 N Rge. 4 E
 Well No. 5 Serial No. 520 Farm Bradley & Sons Trust, Acres _____
et al
 Operator American Drilling Co. and Michigan Oil Company
 Date started 1-16-46 Date completed 3-6-46 Elevation 659.2

PRODUCTION RECORD

1st 24 hours natural _____
 Date of shot _____ No. of quarts _____ From _____ To _____ From _____ to _____
 Date of acid _____ No. of gallons _____
 shot
 1st 24 hours after acid _____
 Completed as: Oil Well _____ Gas Well _____ Dry Hole X

FORMATION AND CASING RECORD

Formation	Top	Bottom	Top Pay	Bottom Pay	Remarks (+459)	Casing	
						Size	Set at
Marshall	200	375	(+459)		Water 200-208.	10"	75
					1 1/2 ba. S.W. per hr.	8-1/4"	504
					745. (-86)	6-5/8"	2399
Sunbury	1390	CTM.	(-731)			5-3/16"	2735
Berea	1410	"	(-751)				
Antrim	1568	"	(-909)				
Traverse Lime	1917	"	(-1258)		Show oil 1935; salt		
					water 2053-2061;		
					flo. salt water 2297. (-1638)		
Dundee	2735	S.L.M.	(-2076)		Show salt water		
					2916 to 2921. (-2257)		
Total Depth		2921	(-2262)				

Remarks 2370' equals 2399' S.L.M.; 2730' equals 2732' S.L.M.

Signed D. C. Shackelford