



Western Michigan University
ScholarWorks at WMU

Legacy Scout Tickets from Pure Oil Company

8-20-2021

**MGRRE_PureOilScoutTickets_ROBINSON,
BERTHA_1_21011120900000**

MGRRE

Western Michigan University

Follow this and additional works at: <https://scholarworks.wmich.edu/pure>



Part of the Geology Commons

WMU ScholarWorks Citation

MGRRE, "MGRRE_PureOilScoutTickets_ROBINSON, BERTHA_1_21011120900000" (2021). *Legacy Scout Tickets from Pure Oil Company*. 501.

<https://scholarworks.wmich.edu/pure/501>

This Document is brought to you for free and open access via ScholarWorks at WMU. It has been accepted for inclusion in Legacy Scout Tickets from Pure Oil Company by an authorized administrator of ScholarWorks at WMU. See the National Digital Catalogue - Science Base Catalogue for more collections submitted by MGRRE.



MGRRE_PureOilScoutTickets_ROBINSON, BERTHA_1_21011120900000

API 21011120900000

Permit Number 12090

Lease Name ROBINSON, BERTHA

Well Number 1

County Arenac

Township 19N

Range 4E

Section 24

2021 DEQ or Pure co_name WELSH OIL CO

Pure Number 523

Latitude 44.0324

Longitude -83.94582

WELL REPORT - OUTSIDE OPERATIONS

SERIAL NO. 523

STATE Michigan ~~WIS~~ CO. Arenac
 OPERATOR Welsh Oil Co.
 FARM Bertha Robinson WELL NO. 1
 TWP. Deep River S. 24 T. 19N R. 4E
 SURVEY
 LOC. NW NW SW

WILDCAT FIELD FIELD NAME _____

MAP NO. _____ CO-ORD. _____ ELEV. _____

STATUS Plugged and Abandoned 4-15-48
Total Depth 2867

NORTH

DATE 5-10-48 SCOUT H. J. G.

THE PURE OIL COMPANY

LOCATION REPORT

Date January 16, 1946

A.F.E. No. _____

Division Mich. Producing

District _____

Lease _____

Bertha Robinson
Bertha Robinson

Acres _____ Lease No. _____

Elevation _____

Well No. 1

(Serial No. 523)

Quadrangle NW-NW-SW
NW NW SW

Sec. 24

Twp. 19 N

Rge. 4 E

Twp. Deep River

Deep River

Survey _____ County Arenac

State Michigan

Operator Welsh Oil Co.
Welsh Oil Company

Map Deep River Township, Arenac County

990 990 Feet from North Line of Lease

" " East " " "

" " South " " "

330 330 Feet from North Line of Section

" " East " " "

" " South " " "

330 330 Feet from North Line of Section

" " East " " "

" " South " " "

LEGEND

○ Location

☀ Gas Well

● Oil Well

☀ Gas - Distillate Well

○ or ○ Dry Hole

● Dry Showing Oil

☀ Dry Showing Gas

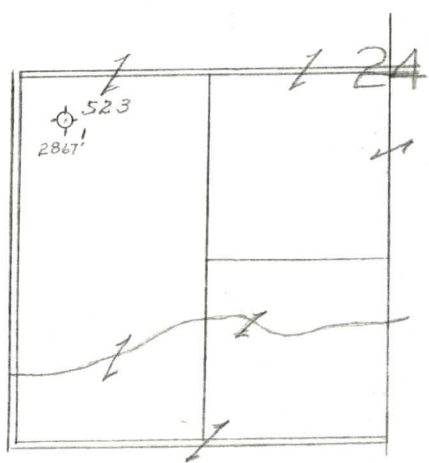
⊗ Abandoned Location

☀ or ⊗ Abandoned Gas Well

● or ● Abandoned Oil Well

● or ○ Input Well

map



Scale _____

Remarks: _____

Submitted by CB _____
 Civil Engineer

Approved by _____
 Division Manager

Approved by _____
 Vice-President - General Manager