



Western Michigan University
ScholarWorks at WMU

Legacy Scout Tickets from Pure Oil Company

8-20-2021

**MGRRE_PureOilScoutTickets_BRINTNELL,
EDWIN_1_21011121000000**

MGRRE
Western Michigan University

Follow this and additional works at: <https://scholarworks.wmich.edu/pure>



Part of the Geology Commons

WMU ScholarWorks Citation

MGRRE, "MGRRE_PureOilScoutTickets_BRINTNELL, EDWIN_1_21011121000000" (2021). *Legacy Scout Tickets from Pure Oil Company*. 502.
<https://scholarworks.wmich.edu/pure/502>

This Document is brought to you for free and open access via ScholarWorks at WMU. It has been accepted for inclusion in Legacy Scout Tickets from Pure Oil Company by an authorized administrator of ScholarWorks at WMU. See the National Digital Catalogue - Science Base Catalogue for more collections submitted by MGRRE.



MGRRE_PureOilScoutTickets_BRINTNELL, EDWIN_1_21011121000000

API 21011121000000

Permit Number 12100

Lease Name BRINTNELL, EDWIN

Well Number 1

County Arenac

Township 20N

Range 6E

Section 19

2021 DEQ or Pure co_name ROUSH FRANK E

Pure Number 524

Latitude 44.1194

Longitude -83.7887

THE PURE OIL COMPANY

LOCATION REPORT

Date January 30, 1946

A.F.E. No. _____

Division Mich. Producing

District _____

Lease Edwin Brintnell

Acres _____ Lease No. _____

Elevation _____

Well No. 1

(Serial No. 524)

Quadrangle NE-NE-SE
NE NE SE

Sec. 19

Twp. 20 N

Rge. 6 E

~~BMK~~ ~~BMK~~ Turner
Twp. Turner

Survey _____

County Arenac

State Michigan

Operator Frank E. Roush

Frank E. Roush

Map Turner Township, Arenac County

330 330 Feet from North Line of Lease

330 330 " " East " " "

" " South " " "

" " West " " "

330 330 Feet from North Line of Section 1/4

330 330 " " East " " "

" " South " " "

" " West " " "

LEGEND

○ Location



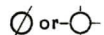
Gas Well



Oil Well



Gas - Distillate Well



Dry Hole



Dry Showing Oil



Dry Showing Gas



Abandoned Location



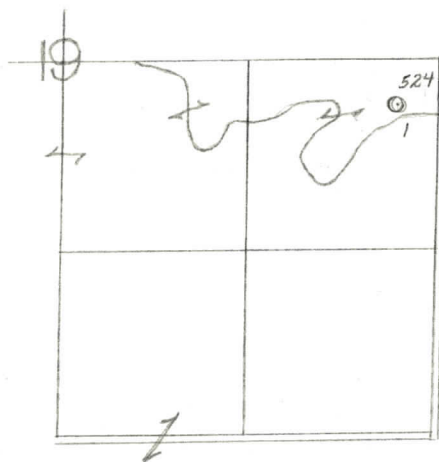
Abandoned Gas Well



Abandoned Oil Well



Input Well



Scale _____

Remarks: _____

Submitted by CB

Civil Engineer

Approved by _____

Division Manager

Approved by _____

Vice-President - General Manager

THE PURE OIL COMPANY
COMPLETION RECORD OF WELLS DRILLED BY OTHER OPERATORS

Michigan Producing Division

Date July 31, 1946 No. 524
 State Mich. Co. Arenac ~~Dist.~~ Turner Sec. 19 Twp. 20 N Rge. 6 E
 Well No. 1 Serial No. 524 Farm Edwin Brintnell Acres _____
 Operator Frank E. Roush
 Date started 4-8-46 Date completed 7-23-46 Elevation 629.7

PRODUCTION RECORD

1st 24 hours natural _____
 Date of shot _____ No. of quarts _____ From _____ To _____ From _____ To _____
 Date of acid _____ No. of gallons _____
 1st 24 hours after acid _____
 Completed as: Oil Well _____ Gas Well _____ Dry Hole X

FORMATION AND CASING RECORD

Formation	Top	Bottom	Top Pay	Bottom Pay	Remarks	Casing	
						Size	Set at
					Flow. fresh wtr. 45-55.10"		19
Marshall	75	160	(+555)		1 ba. wtr. per hr.	8-1/4"	295
					940-955. (-310)	6-5/8"	1607
Sunbury	1407	(-777)				5-3/16"	2455
Berea	1440	(-810)			H.F.S.W. 1485-1495.	(-855)	
					H.F.S.W. 1570-1580.	(-940)	
Antrim	1642	(-1012)					
Traverse Lime	2030	(-1400)			Flo. S.W. 2035-2045;	(-1405)	
					2420-2430. (-1790)		
Dundee	2825	S.L.M.	(-2195)		250 ft. S.W. from		
					2985-2991. (-2355)		
Total Depth		2991	(-2361)				

Remarks 1325' eq. 1330' S.L.M.; 2815' eq. 2825' S.L.M.

Signed D. C. Shackelford