



Western Michigan University  
ScholarWorks at WMU

---

Legacy Scout Tickets from Pure Oil Company

---

8-20-2021

MGRRE\_PureOilScoutTickets\_BILARSKI,  
ALEX\_3\_21011121320000

MGRRE  
*Western Michigan University*

Follow this and additional works at: <https://scholarworks.wmich.edu/pure>



Part of the Geology Commons

---

#### WMU ScholarWorks Citation

MGRRE, "MGRRE\_PureOilScoutTickets\_BILARSKI, ALEX\_3\_21011121320000" (2021). *Legacy Scout Tickets from Pure Oil Company*. 507.  
<https://scholarworks.wmich.edu/pure/507>

This Document is brought to you for free and open access via ScholarWorks at WMU. It has been accepted for inclusion in Legacy Scout Tickets from Pure Oil Company by an authorized administrator of ScholarWorks at WMU. See the National Digital Catalogue - Science Base Catalogue for more collections submitted by MGRRE.



---

MGRRE\_PureOilScoutTickets\_BILARSKI, ALEX\_3\_21011121320000

API 21011121320000

Permit Number 12132

Lease Name BILARSKI, ALEX

Well Number 3

County Arenac

Township 19N

Range 4E

Section 24

2021 DEQ or Pure co\_name GORDON OIL CO

Pure Number 529

Latitude 44.03719

Longitude -83.94537

Corrected

## THE PURE OIL COMPANY

Date July 17, 1946 Corrected

## LOCATION REPORT

A.F.E. No. \_\_\_\_\_

Division Mich. Producing District \_\_\_\_\_

Lease \_\_\_\_\_

Alex Bilarski  
Alex Bilarski

Acres \_\_\_\_\_ Lease No. \_\_\_\_\_

Elevation \_\_\_\_\_

Well No. 3(Serial No. 529)Quadrangle SW NW NWSec. 24Twp. 19 NRge. 4 ETwp. Deep RiverSurvey \_\_\_\_\_ County ArenacState MichiganOperator Ervin MajorMap Deep River Township, Arenac County

Feet from North Line of Lease

790 790

" " East " " "

460 460

" " South " " "

1190 1190Feet from North Line of Section 1/4

" " East " " "

460 460

" " South " " "

" " West " " "

## LEGEND

○ Location



Gas Well



Oil Well



Gas - Distillate Well



Dry Hole



Dry Showing Oil



Dry Showing Gas



Abandoned Location



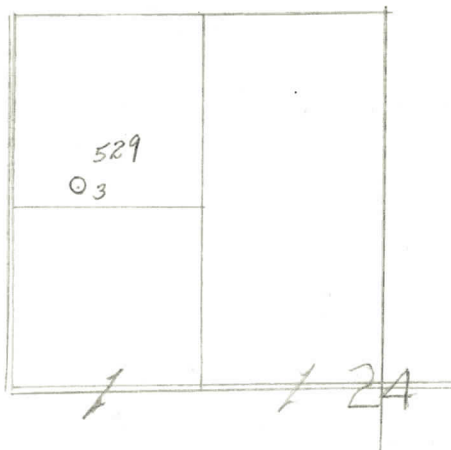
Abandoned Gas Well



Abandoned Oil Well



Input Well



N

Remarks: Footage correction.

Scale \_\_\_\_\_

Submitted by UB

Civil Engineer

Approved by \_\_\_\_\_

Division Manager

Approved by \_\_\_\_\_

Vice-President - General Manager

Date February 20, 1946 LOCATION REPORT A.F.E. No. \_\_\_\_\_

Division Mich. Producing District \_\_\_\_\_ Lease Alex Bilarski

Acres \_\_\_\_\_ Lease No. \_\_\_\_\_ Elevation \_\_\_\_\_ Well No. 3 (Serial No. 529)

Quadrangle SW-NW-NW Sec. 24 Twp. 19 N Rge. 4 E Deep River

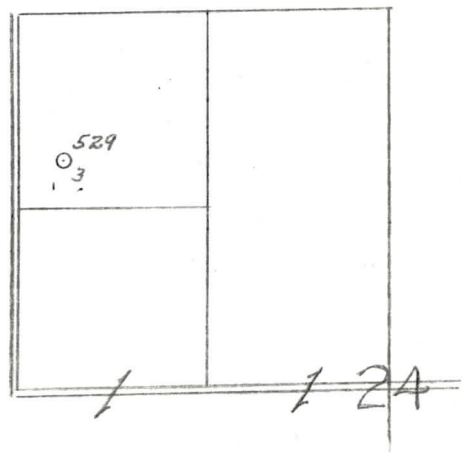
Survey \_\_\_\_\_ County Arenac State Michigan

Operator Ervin Major Map Deep River Township, Michigan

990 990 Feet from North Line of Lease  
" " East " " "  
" " South " " "  
330 330 " " West " " "  
990 990 Feet from North Line of Section  
" " East " " "  
" " South " " "  
330 330 " " West " " "

LEGEND

- Location
- ☀ Gas Well
- Oil Well
- ☀ Gas - Distillate Well
- or ○ Dry Hole
- Dry Showing Oil
- ☀ Dry Showing Gas
- ⊗ Abandoned Location
- ☀ or ⊗ Abandoned Gas Well
- or ● Abandoned Oil Well
- or ○ Input Well



Remarks: \_\_\_\_\_

Submitted by CB Civil Engineer Approved by \_\_\_\_\_ Division Manager

Approved by \_\_\_\_\_ Vice-President - General Manager



