



Western Michigan University  
ScholarWorks at WMU

---

Legacy Scout Tickets from Pure Oil Company

---

8-20-2021

MGRRE\_PureOilScoutTickets\_BILARSKI,  
ALEX\_4\_21011121330000

MGRRE  
*Western Michigan University*

Follow this and additional works at: <https://scholarworks.wmich.edu/pure>



Part of the Geology Commons

---

#### WMU ScholarWorks Citation

MGRRE, "MGRRE\_PureOilScoutTickets\_BILARSKI, ALEX\_4\_21011121330000" (2021). *Legacy Scout Tickets from Pure Oil Company*. 508.  
<https://scholarworks.wmich.edu/pure/508>

This Document is brought to you for free and open access via ScholarWorks at WMU. It has been accepted for inclusion in Legacy Scout Tickets from Pure Oil Company by an authorized administrator of ScholarWorks at WMU. See the National Digital Catalogue - Science Base Catalogue for more collections submitted by MGRRE.



---

MGRRE\_PureOilScoutTickets\_BILARSKI, ALEX\_4\_21011121330000

API 21011121330000

Permit Number 12133

Lease Name BILARSKI, ALEX

Well Number 4

County Arenac

Township 19N

Range 4E

Section 24

2021 DEQ or Pure co\_name GORDON OIL CO

Pure Number 530

Latitude 44.03777

Longitude -83.94337

## WELL REPORT—OUTSIDE OPERATIONS

530

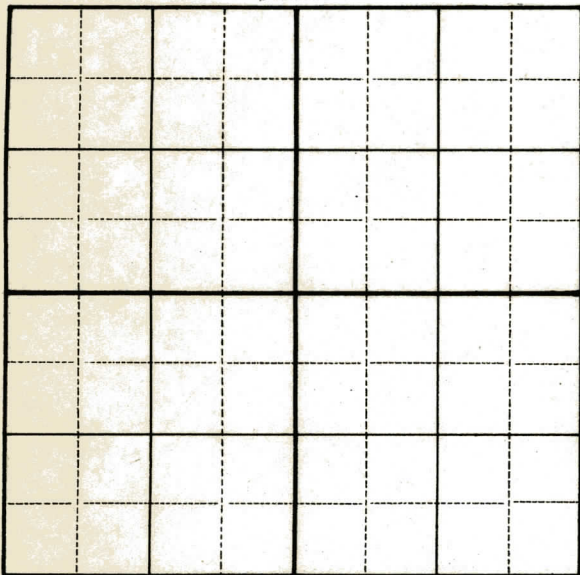
SERIAL NO. \_\_\_\_\_

STATE Michigan XX Arenac  
PSH  
CO.OPERATOR Ervin MajorFARM Alex BilarskiWELL NO. 4TWP. xx Deep River  
SURVEYS. 24 T. 19N R. 4ELOC. SE NW NWWILDCAT ☐ FIELD ☐ FIELD NAME \_\_\_\_\_

MAP NO. \_\_\_\_\_ CO-ORD. \_\_\_\_\_ ELEV. \_\_\_\_\_

STATUS Old Well to be drilled deeper.

NORTH

DATE 7-25-49 SCOUT H. J. G.

# THE PURE OIL COMPANY

## LOCATION REPORT

Date February 20, 1946 A.F.E. No. Alex Bilarski  
 Division Mich. Producing District Alex Bilarski Lease 4  
 Acres SE-NW-NW Lease No. 24 Elevation 19 N Well No. 4 (Serial No. 530)  
 Quadrangle SE NW NW Sec. 24 Twp. 19 N Rge. 4 E ~~XBX~~ ~~XBX~~ Deep River  
 Survey Arenac County Arenac State Michigan

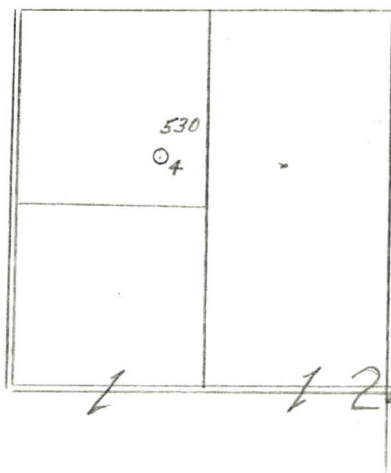
Operator Ervin Major Map Deep River Township, Arenac County

990 990 Feet from North Line of Lease  
330 330 " " East " " "  
 " " South " " "  
 " " West " " "  
990 990 Feet from North Line of Section  
 " " East " " "  
 " " South " " "  
990 990 " " West " " "

### LEGEND

○ Location

- ☀ Gas Well
- Oil Well
- ☀ Gas - Distillate Well
- or ○ Dry Hole
- Dry Showing Oil
- ☀ Dry Showing Gas
- ⊗ Abandoned Location
- ☀ or ☀ Abandoned Gas Well
- or ● Abandoned Oil Well
- or ○ Input Well



Scale \_\_\_\_\_

Remarks: \_\_\_\_\_  
 \_\_\_\_\_  
 \_\_\_\_\_

Submitted by CB Civil Engineer Approved by \_\_\_\_\_ Division Manager

Approved by \_\_\_\_\_ Vice-President - General Manager



Michigan Producing Division

No. 530

Well No. 4 Serial No. 530 Farm Alex Bilarski Acres           

Operator **Ervin Major**

Date started **8-28-46** Date completed **9-16-46** Elevation **659.1**

## 1st 24 hours natural

[illegible]

Date of acid 10-8-46 No. of gallons 500

1st 24 hours after acid      **No results**

Completed as: Oil Well Gas Well Dry Hole ☒

# FORMATION AND CASING RECORD

Formation	Top	Bottom	Top Pay	Bottom Pay	Remarks	Casing	
						Size	Set at
Marshall	235	(+424)				10"	55
Trav. Lime	1979?	(-1320)				5-3/16	2755
Dundee	2763	(-2104)					
Total Depth	2786	(-2124)					
New Total Depth	3215						
SWD - Injection test -							
80 Bbls. Fresh Water in 12 Hrs.							

Remarks This well cored from 2739-2786 - Showed 6" of Saturated Porosity between 2765-66.

Signed **Harry J. Gaspeny**