



Western Michigan University  
ScholarWorks at WMU

---

Legacy Scout Tickets from Pure Oil Company

---

8-20-2021

MGRRE\_PureOilScoutTickets\_BILARSKI,  
ALEX\_1\_21011121460000

MGRRE  
*Western Michigan University*

Follow this and additional works at: <https://scholarworks.wmich.edu/pure>



Part of the Geology Commons

---

#### WMU ScholarWorks Citation

MGRRE, "MGRRE\_PureOilScoutTickets\_BILARSKI, ALEX\_1\_21011121460000" (2021). *Legacy Scout Tickets from Pure Oil Company*. 511.  
<https://scholarworks.wmich.edu/pure/511>

This Document is brought to you for free and open access via ScholarWorks at WMU. It has been accepted for inclusion in Legacy Scout Tickets from Pure Oil Company by an authorized administrator of ScholarWorks at WMU. See the National Digital Catalogue - Science Base Catalogue for more collections submitted by MGRRE.



---

**MGRRE\_PureOilScoutTickets\_BILARSKI, ALEX\_1\_21011121460000**

API 21011121460000

Permit Number 12146

Lease Name BILARSKI, ALEX

Well Number 1

County Arenac

Township 19N

Range 4E

Section 24

2021 DEQ or Pure co\_name GORDON OIL CO

Pure Number 533

Latitude 44.03602

Longitude -83.94586

# THE PURE OIL COMPANY LOCATION REPORT

Date February 28, 1946

A.F.E. No. \_\_\_\_\_

Division Mich. Producing District \_\_\_\_\_

Lease Alex Bilarski

Acres \_\_\_\_\_ Lease No. \_\_\_\_\_ Elevation \_\_\_\_\_ Well No. 1 (Serial No. 533)

Quadrangle NW-SW-NW Sec. 24 Twp. 19 N Rge. 4 E Twp. Deep River

Survey \_\_\_\_\_ County Arenac State Michigan

Operator Ervin Major Map Deep River Township, Arenac County

Feet from North Line of Lease

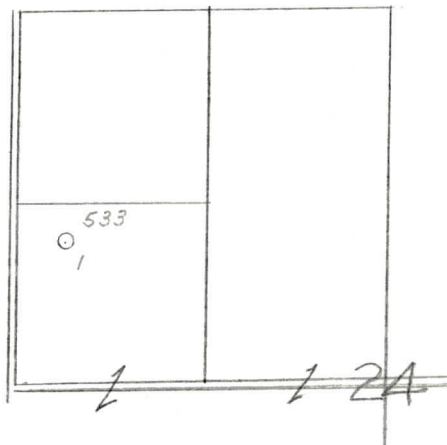
|            |            |   |   |       |   |   |   |
|------------|------------|---|---|-------|---|---|---|
| <u>330</u> | <u>330</u> | " | " | East  | " | " | " |
| <u>330</u> | <u>330</u> | " | " | South | " | " | " |
|            |            | " | " | West  | " | " | " |

Feet from North Line of Section

|            |            |   |   |       |   |            |   |
|------------|------------|---|---|-------|---|------------|---|
| <u>990</u> | <u>990</u> | " | " | East  | " | "          | " |
| <u>330</u> | <u>330</u> | " | " | South | " | <u>1/4</u> | " |
|            |            | " | " | West  | " | "          | " |

## LEGEND

- |                       |          |                    |
|-----------------------|----------|--------------------|
| Gas Well              | Location | Dry Showing Gas    |
| Oil Well              |          | Abandoned Location |
| Gas - Distillate Well | or       | Abandoned Gas Well |
| or  Dry Hole          | or       | Abandoned Oil Well |
| Dry Showing Oil       | or       | Input Well         |



Remarks: \_\_\_\_\_ Scale \_\_\_\_\_

Submitted by CB Civil Engineer Approved by \_\_\_\_\_ Division Manager

Approved by \_\_\_\_\_ Vice-President - General Manager



THE PURE OIL COMPANY

Michigan Producing

NW-SW-NW

# PRODUCTION RECORD

Estimated potential - 2400 Bbls.

# FORMATION AND CASING RECORD

[illegible]

Remarks

Signed D. C. Shackelford