



Western Michigan University
ScholarWorks at WMU

Legacy Scout Tickets from Pure Oil Company

8-20-2021

MGRRE_PureOilScoutTickets_BRENNON, ED_1_21011122900000

MGRRE

Western Michigan University

Follow this and additional works at: <https://scholarworks.wmich.edu/pure>



Part of the Geology Commons

WMU ScholarWorks Citation

MGRRE, "MGRRE_PureOilScoutTickets_BRENNON, ED_1_21011122900000" (2021). *Legacy Scout Tickets from Pure Oil Company*. 524.

<https://scholarworks.wmich.edu/pure/524>

This Document is brought to you for free and open access via ScholarWorks at WMU. It has been accepted for inclusion in Legacy Scout Tickets from Pure Oil Company by an authorized administrator of ScholarWorks at WMU. See the National Digital Catalogue - Science Base Catalogue for more collections submitted by MGRRE.



MGRRE_PureOilScoutTickets_BRENNON, ED_1_21011122900000

API 21011122900000

Permit Number 12290

Lease Name BRENNON, ED

Well Number 1

County Arenac

Township 18N

Range 4E

Section 14

2021 DEQ or Pure co_name SOHIO PETROLEUM CO AND TALBOT C W

Pure Number 546

Latitude 43.95852

Longitude -83.94787

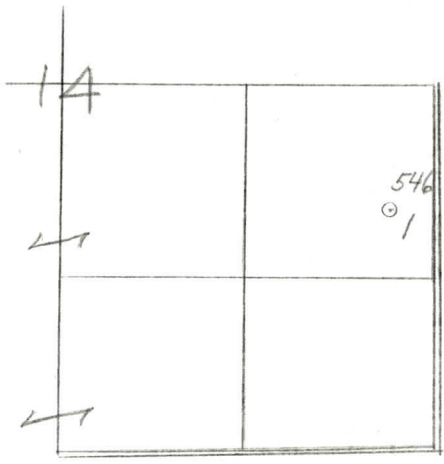
THE PURE OIL COMPANY LOCATION REPORT

Date May 8, 1946 A.F.E. No. Ed. Brennon
 Division Mich. Producing District _____ Lease Ed. Brennon
 Acres _____ Lease No. _____ Elevation _____ Well No. 1 (Serial No. 546)
 Quadrangle 125° N - E - NE - SE Sec. 14 Twp. 18 N Rge. 4 E Twp. Lincoln
 Survey _____ County Arenac State Michigan
 Operator Sohio Petroleum Company and C. W. Talbot Map Lincoln Township, Arenac County

		Feet from North Line of Lease
<u>330</u>	<u>330</u>	" " East " " "
<u>455</u>	<u>455</u>	" " South " " "
		" " West " " "
<u>865</u>	<u>865</u>	Feet from North Line <u>1/4</u> Section
<u>330</u>	<u>330</u>	" " East " " "
		" " South " " "
		" " West " " "

LEGEND

<p>☀ Gas Well</p> <p>● Oil Well</p> <p>☼ Gas - Distillate Well</p> <p>○ or ○ Dry Hole</p> <p>● Dry Showing Oil</p>	<p>○ Location</p> <p>☼ Dry Showing Gas</p> <p>⊗ Abandoned Location</p> <p>☼ or ☼ Abandoned Gas Well</p> <p>● or ● Abandoned Oil Well</p> <p>● or ○ Input Well</p>
--	---



Scale _____

Remarks: _____

Submitted by CB Civil Engineer Approved by _____ Division Manager

Approved by _____ Vice-President - General Manager

Michigan Producing Division

PRODUCTION RECORD

FORMATION AND CASING RECORD

Remarks	1875' eq. 1875' S.L.N.; 2672' equals 2672' S.L.M.
---------	---

Signed **D. C. Shackelford**