



Western Michigan University  
ScholarWorks at WMU

---

Legacy Scout Tickets from Pure Oil Company

---

8-20-2021

**MGRRE\_PureOilScoutTickets\_BRADLEY, N B & SONS TRUST ET  
AL\_4\_21011123420000**

MGRRE  
*Western Michigan University*

Follow this and additional works at: <https://scholarworks.wmich.edu/pure>



Part of the Geology Commons

---

#### WMU ScholarWorks Citation

MGRRE, "MGRRE\_PureOilScoutTickets\_BRADLEY, N B & SONS TRUST ET AL\_4\_21011123420000" (2021).  
*Legacy Scout Tickets from Pure Oil Company*. 530.  
<https://scholarworks.wmich.edu/pure/530>

This Document is brought to you for free and open access via ScholarWorks at WMU. It has been accepted for inclusion in Legacy Scout Tickets from Pure Oil Company by an authorized administrator of ScholarWorks at WMU. See the National Digital Catalogue - Science Base Catalogue for more collections submitted by MGRRE.



---

MGRRE\_PureOilScoutTickets\_BRADLEY, N B & SONS TRUST ET  
AL\_4\_21011123420000

API 21011123420000

Permit Number 12342

Lease Name BRADLEY, N B & SONS TRUST ET AL

Well Number 4

County Arenac

Township 19N

Range 4E

Section 23

2021 DEQ or Pure co\_name LEASE MANAGEMENT INC

Pure Number 552

Latitude 44.0379488

Longitude -83.9560351

Form 21-1 **WELL REPORT - OUTSIDE OPERATIONS**SERIAL NO. **552**STATE **Michigan** <sup>PSH</sup> ~~CO.~~ **Arenac**OPERATOR **Michigan Oil Co.**FARM **N.B. Bradley & Sons Trust et al** WELL NO. **4**TWP. **Deep River** S. **23** T. **19N** R. **4E**LOC. **SW NW NE**WILDCAT ☐ FIELD ☐ FIELD NAME \_\_\_\_\_

MAP NO. \_\_\_\_\_ CO-ORD. \_\_\_\_\_ ELEV. \_\_\_\_\_

STATUS \_\_\_\_\_

Correcting operators name from American Drilling  
Co. & Michigan Oil Co.

NORTH


DATE **3-10-48** SCOUT **HJC**

THE PURE OIL COMPANY

LOCATION REPORT

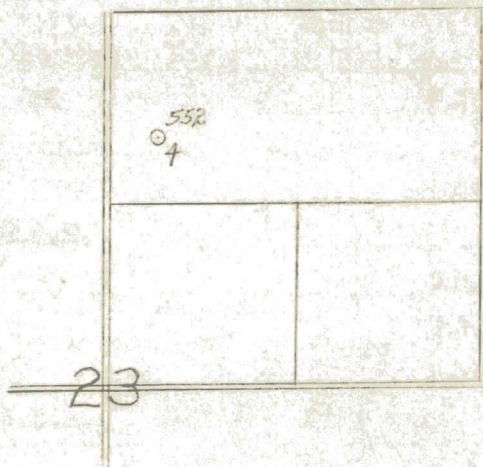
Date June 5, 1946 A.F.E. No. N.B. Bradley & Sons Trust et al  
 Division Mich. Producing District \_\_\_\_\_ Lease N.B. Bradley & Sons Trust, et al  
 Acres \_\_\_\_\_ Lease No. \_\_\_\_\_ Elevation \_\_\_\_\_ Well No. 4 (Serial No. 552)  
 Quadrangle SW NW NE Sec. 23 Twp. 19 N Rge. 4 E Twp. Deep River  
 Survey \_\_\_\_\_ County Arenac State Michigan  
 Operator American Drl'g. Co. & Mich. Oil Co. Map Deep River Township, Arenac County

Feet from North Line of Lease

<u>405</u>	<u>405</u>	" "	East	" "	" "
<u>330</u>	<u>330</u>	" "	South	" "	" "
<u>915</u>	<u>915</u>	" "	West	" "	" "
Feet from North Line of Section					
		" "	East	" "	" "
		" "	South	" "	" "
<u>330</u>	<u>330</u>	" "	West	" "	" "

LEGEND

- Location
- ☼ Gas Well
- Oil Well
- ☼ Gas - Distillate Well
- or ○ Dry Hole
- Dry Showing Oil
- ☼ Dry Showing Gas
- ⊗ Abandoned Location
- ☼ or ☼ Abandoned Gas Well
- or ● Abandoned Oil Well
- or ○ Input Well



Remarks: \_\_\_\_\_ Scale \_\_\_\_\_

Submitted by CB Civil Engineer Approved by \_\_\_\_\_ Division Manager

Approved by \_\_\_\_\_ Vice-President - General Manager



Michigan Producing Division

Date July 31, 1946 No. 552  
 State Michigan Co. Arenac Dist. Deep River Twp. Deep River Sec. 23 Twp. 19 N Rge. 4 E  
 Well No. 4 Serial No. 552 Farm Bradley & Sons Trust, Acres et al  
 Operator American Drilling Co. and Michigan Oil Co.  
 Date started 6-2-46 Date completed 7-23-46 Elevation 668.2

PRODUCTION RECORD

1st 24 hours natural Estimated potential - 8,160 Bbls.  
 Date of shot No. of quarts From To From To  
 Date of acid No. of gallons shot  
 1st 24 hours after acid  
 Completed as: Oil Well X Gas Well  Dry Hole

FORMATION AND CASING RECORD

Formation	Top	Bottom	Top Pay	Bottom Pay	Remarks	Casing	
						Size	Set at
Marshall	170	260	(+498)		H.F.W. 170. (+498)	10"	97
Sunbury	1409	(-741)				8-1/4"	495
Berea	1444	(-776)			Show S.W. 1508-1515.	6-5/8"	2422
Antrim	1585	S.L.M.	(-917)		(-840)	5-3/16"	2718
Traverse Lime	1940	(-1272)			Small show oil 1950.	(-1282)	
					H.F.S.W. 2090-Flow	(-1422)	
					S.W. 2340. (-1672)		
Dundee	2717	S.L.M.	2719	2725			
			2732	2738	(-2064)		
Total Depth		2738	(-2070)				

Remarks 1660' equals 1645' S.L.M.

Signed D. C. Shackelford