



Western Michigan University  
ScholarWorks at WMU

---

Legacy Scout Tickets from Pure Oil Company

---

8-20-2021

**MGRRE\_PureOilScoutTickets\_CONSUMERS POWER  
CO\_1\_21011123580000**

MGRRE  
*Western Michigan University*

Follow this and additional works at: <https://scholarworks.wmich.edu/pure>



Part of the Geology Commons

---

#### WMU ScholarWorks Citation

MGRRE, "MGRRE\_PureOilScoutTickets\_CONSUMERS POWER CO\_1\_21011123580000" (2021). *Legacy Scout Tickets from Pure Oil Company*. 531.  
<https://scholarworks.wmich.edu/pure/531>

This Document is brought to you for free and open access via ScholarWorks at WMU. It has been accepted for inclusion in Legacy Scout Tickets from Pure Oil Company by an authorized administrator of ScholarWorks at WMU. See the National Digital Catalogue - Science Base Catalogue for more collections submitted by MGRRE.



---

MGRRE\_PureOilScoutTickets\_CONSUMERS POWER CO\_1\_21011123580000

API 21011123580000

Permit Number 12358

Lease Name CONSUMERS POWER CO

Well Number 1

County Arenac

Township 20N

Range 3E

Section 13

2021 DEQ or Pure co\_name RAYBURN DON F

Pure Number 553

Latitude 44.14066

Longitude -84.05104

THE PURE OIL COMPANY

Date June 13, 1946

LOCATION REPORT

A.F.E. No. \_\_\_\_\_

Division Michigan Producing District \_\_\_\_\_

Lease Consumers Power Co.  
Consumers Power Co.

Acres \_\_\_\_\_ Lease No. \_\_\_\_\_

Elevation \_\_\_\_\_

Well No. 1

(Serial No. 553)

Quadrangle NW NE NE

Sec. 13

Twp. 20-N

Rge. 3-E

Bk. Dist. Moffatt

Twp. Moffatt

Survey \_\_\_\_\_ County Arenac

State Michigan

Operator Don Rayburn

Map Moffatt Township, Arenac County

330 330

Feet from North Line of Lease

" " East " " "

" " South " " "

330 330

Feet from North Line of Section

" " West " " "

330 330

" " East " " "

990 990

" " South " " "

" " West " " "

LEGEND

○ Location

☼ Gas Well

● Oil Well

☼ Gas - Distillate Well

○ or ○ Dry Hole

● Dry Showing Oil

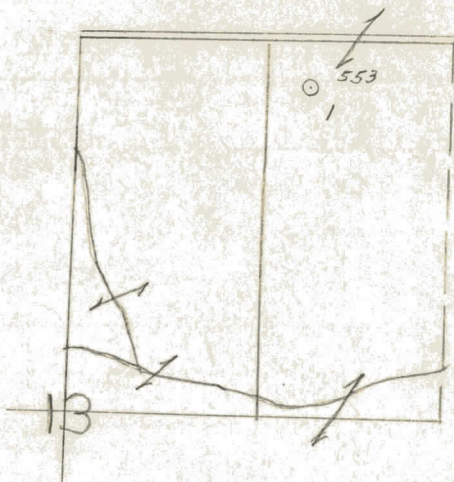
☼ Dry Showing Gas

⊗ Abandoned Location

☼ or ☼ Abandoned Gas Well

● or ● Abandoned Oil Well

● or ○ Input Well



Remarks: \_\_\_\_\_

Scale \_\_\_\_\_

Submitted by CB

Civil Engineer

Approved by \_\_\_\_\_

Division Manager

Approved by \_\_\_\_\_

Vice-President - General Manager



COMPLETION RECORD OF WELLS DRILLED BY OTHER OPERATORS

Michigan Producing Division

DateJuly 31, 1946No. 553

StateMich. Co. ArenacTwp. MoffattSec. 13Twp. 20 N Rge. 3 E

Well No. 1Serial No. 553Farm Consumers Power CompanyAcres

OperatorDon Rayburn

Date started6-12-46Date completed7-27-46Elevation772.4

PRODUCTION RECORD

1st 24 hours natural

Date of shot	No. of quarts	From	To	From	To
Date of acid	No. of gallons				

1st 24 hours after acid

Completed as: Oil Well Gas Well Dry Hole X

FORMATION AND CASING RECORD

Formation	Top	Bottom	Top Pay	Bottom Pay	Remarks	Casing	
						Size	Set at
Marshall	208	319	(+564)		1 ba. S.W. per hr. 705-773. (+67)	10"	155
Coldw. Red Rock	1316	1321	(-544)			8-1/4"	507
Sunbury	1444	(-672)					
Berea	1467	(-695)			H.F.S.W. in Berea. (-695)		
Antrim	1645	(-873)			Show gas 1515-1520. (small) (-743)		
Traverse Line	2030	S.L.M.	(-1258)				
Dundee	2827	(-2055)			600 ft. salt water 3010-3025. (-2238)		
Total Depth		3025	(-2253)				

Remarks 1220' eq. 1228' S.L.M.; 1478' eq. 1478' S.L.M.; 2083' eq. 2083' S.L.M.

Signed D. C. Shackelford