



Western Michigan University  
ScholarWorks at WMU

---

Legacy Scout Tickets from Pure Oil Company

---

8-20-2021

**MGRRE\_PureOilScoutTickets\_CHARCHAN, JOHN &  
JULIA\_3\_21011124030000**

MGRRE  
*Western Michigan University*

Follow this and additional works at: <https://scholarworks.wmich.edu/pure>



Part of the Geology Commons

---

#### WMU ScholarWorks Citation

MGRRE, "MGRRE\_PureOilScoutTickets\_CHARCHAN, JOHN & JULIA\_3\_21011124030000" (2021). *Legacy Scout Tickets from Pure Oil Company*. 535.  
<https://scholarworks.wmich.edu/pure/535>

This Document is brought to you for free and open access via ScholarWorks at WMU. It has been accepted for inclusion in Legacy Scout Tickets from Pure Oil Company by an authorized administrator of ScholarWorks at WMU. See the National Digital Catalogue - Science Base Catalogue for more collections submitted by MGRRE.



---

MGRRE\_PureOilScoutTickets\_CHARCHAN, JOHN & JULIA\_3\_21011124030000

API 21011124030000

Permit Number 12403

Lease Name CHARCHAN, JOHN & JULIA

Well Number 3

County Arenac

Township 19N

Range 4E

Section 23

2021 DEQ or Pure co\_name LEASE MANAGEMENT INC

Pure Number 557

Latitude 44.03769

Longitude -83.95839

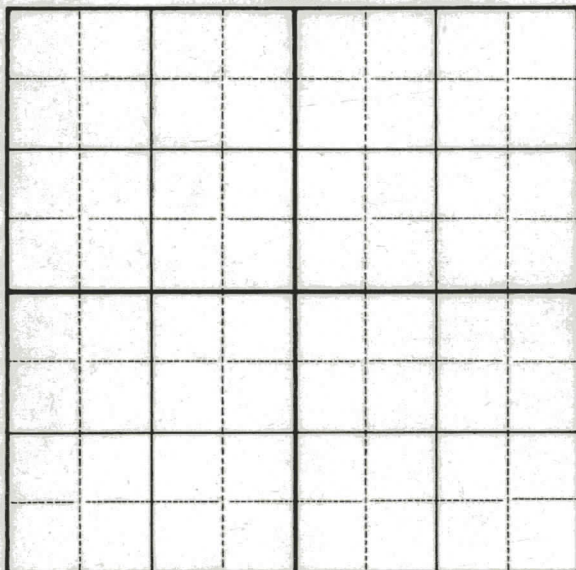
## WELL REPORT - OUTSIDE OPERATIONS

SERIAL NO. 557STATE Michigan ~~IND~~ CO. ArenacOPERATOR Gordon Oil Co.FARM J. & L. Charchan WELL NO. 3TWP. Deep River S. 23 T. 19N R. 4ELOC. SE NE NWWILDCAT ☐ FIELD ☐ FIELD NAME \_\_\_\_\_

MAP NO. \_\_\_\_\_ CO-ORD. \_\_\_\_\_ ELEV. \_\_\_\_\_

STATUS Plugged and abandoned - 11-1-54Total Depth - 2757'

NORTH

DATE 12-13-54 SCOUT JEC

THE PURE OIL COMPANY

LOCATION REPORT

Date June 26, 1946

Division Mich. Producing District \_\_\_\_\_

A.F.E. No. John & Julia Charchan  
John & Julia Charchan

Acres \_\_\_\_\_ Lease No. 23 Elevation 19N Well No. 3 (Serial No. 557)

Quadrangle SE NE NW Sec. 23 Twp. 19 N Rge. 4 E Deep River  
Arenac Twp. Deep River

Survey \_\_\_\_\_ County Arenac State Michigan

Operator Ervin Major

Map Deep River Township, Arenac County

		Feet from North Line of Lease
<u>330</u>	<u>330</u>	" " East " " "
<u>330</u>	<u>330</u>	" " South " " "
		" " West " " "
		Feet from North Line of Section
<u>990</u>	<u>990</u>	" " East " " "
<u>330</u>	<u>330</u>	" " South " " "
		" " West " " "

LEGEND

○ Location

☼ Gas Well

● Oil Well

☼ Gas - Distillate Well

○ or ○ Dry Hole

● Dry Showing Oil

☼ Dry Showing Gas

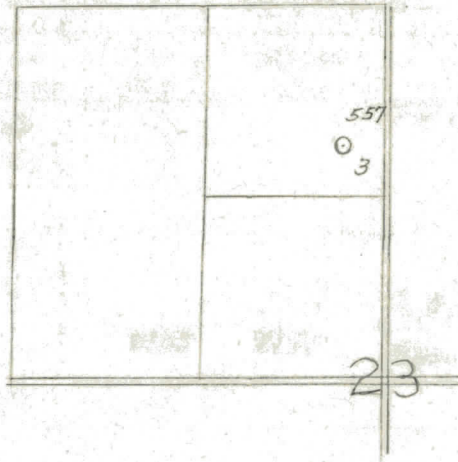
⊗ Abandoned Location

☼ or ☼ Abandoned Gas Well

● or ● Abandoned Oil Well

● or ○ Input Well

*Handwritten notes:*  
570 and  
5.8 1/4  
5.6-20-46  
sp 20 160  
10" 195' 345  
Hfw 195'



Remarks: \_\_\_\_\_

Scale \_\_\_\_\_

Submitted by ch

Civil Engineer

Approved by \_\_\_\_\_

Division Manager

Approved by \_\_\_\_\_

Vice-President - General Manager



