



Western Michigan University  
ScholarWorks at WMU

---

Legacy Scout Tickets from Pure Oil Company

---

8-20-2021

**MGRRE\_PureOilScoutTickets\_ROBINSON,  
BERTHA\_3\_21011126740000**

MGRRE  
*Western Michigan University*

Follow this and additional works at: <https://scholarworks.wmich.edu/pure>



Part of the Geology Commons

---

#### **WMU ScholarWorks Citation**

MGRRE, "MGRRE\_PureOilScoutTickets\_ROBINSON, BERTHA\_3\_21011126740000" (2021). *Legacy Scout Tickets from Pure Oil Company*. 553.

<https://scholarworks.wmich.edu/pure/553>

This Document is brought to you for free and open access via ScholarWorks at WMU. It has been accepted for inclusion in Legacy Scout Tickets from Pure Oil Company by an authorized administrator of ScholarWorks at WMU. See the National Digital Catalogue - Science Base Catalogue for more collections submitted by MGRRE.



---

**MGRRE\_PureOilScoutTickets\_ROBINSON, BERTHA\_3\_21011126740000**

API 21011126740000

Permit Number 12674

Lease Name ROBINSON, BERTHA

Well Number 3

County Arenac

Township 19N

Range 4E

Section 24

2021 DEQ or Pure co\_name WELSH OIL CO

Pure Number 575

Latitude 44.03423

Longitude -83.9439

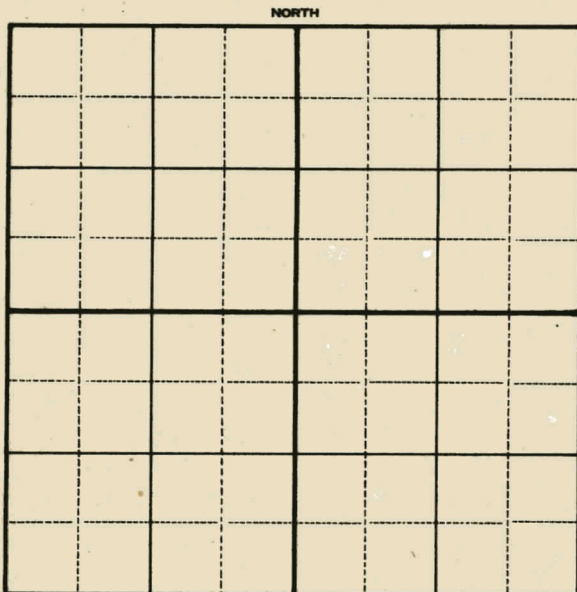
SERIAL NO. 575

STATE Michigan ~~PSH~~ CO. Arenac  
 OPERATOR Welsh Oil Company  
 FARM Bertha Robinson WELL NO. 3  
 TWP. Deep River S. 24 T. 19N R. 4E  
 SURVEY SE SW NW  
 LOC. \_\_\_\_\_

WILDCAT  FIELD  FIELD NAME \_\_\_\_\_

MAP NO. \_\_\_\_\_ CO-ORD. \_\_\_\_\_ ELEV. \_\_\_\_\_

STATUS Total Depth 2854'. P.B.T.D. 2809'.  
Abandoned 9-2-49. To be used for  
Brine Disposal.



DATE 10-25-49 SCOUT H. J. G.

OBENVLON METRO OF WINDSOR  
 WELL REPORT - 2" SIDE OPERATIONS  
 BIVLE MICHIGAN CO VLAUYS

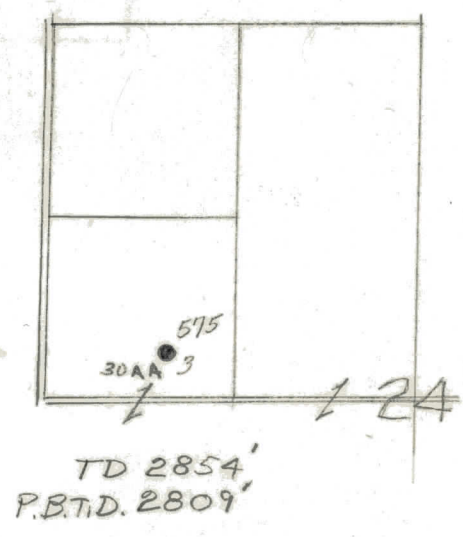
THE PURE OIL COMPANY  
 LOCATION REPORT

Date October 9, 1946 A.F.E. No. Bertha Robinson  
 Division Mich. Producing District \_\_\_\_\_ Lease Bertha Robinson  
 Acres \_\_\_\_\_ Lease No. \_\_\_\_\_ Elevation \_\_\_\_\_ Well No. 3 (Serial No. 575)  
 Quadrangle SE-SW-NW Sec. 24 Twp. 19 N Rge. 4 E Twp. Deep River  
 Survey \_\_\_\_\_ County Arenac State Michigan  
 Operator Welsh Oil Co Map Deep River Township, Arenac County  
330 330 840 840

		Feet from North Line of Lease
		“ “ East “ “ “
		“ “ South “ “ “
<u>840</u>	<u>840</u>	“ “ West “ “ “
		Feet from North Line of Section
		“ “ East “ “ “
<u>330</u>	<u>330</u>	“ “ South “ “ <u>1/4</u>
<u>840</u>	<u>840</u>	“ “ West “ “ “

LEGEND

- ☀ Gas Well
- Oil Well
- ☀ Gas - Distillate Well
- ⊘ or ○ Dry Hole
- Dry Showing Oil
- Location
- ☉ Dry Showing Gas
- ⊘ Abandoned Location
- ☀ or ☀ Abandoned Gas Well
- or ● Abandoned Oil Well
- or ○ Input Well



Remarks: \_\_\_\_\_ Scale \_\_\_\_\_

Submitted by CB Civil Engineer Approved by \_\_\_\_\_ Division Manager  
 Approved by \_\_\_\_\_ Vice-President - General Manager