

# WESTERN MICHIGAN UNIVERSITY WESTERN NEWS

Volume 17, Number 35

August 8, 1991

## Gifts reach record high of \$10.8 million

Private gifts to the University reached a record high of \$10.8 million during the 1990-91 fiscal year, the Board of Trustees learned at its July 26 meeting.

The \$10,860,395 gift total for the fiscal year, which ended on June 30, is nearly twice the previous record total of \$5,677,345 set at the end of the 1988-89 fiscal year. Combined with last year's \$5,667,845 gift total, the University has received more than \$22.2 million in gifts during the past three years.

The record gift levels are in response to the University's Campaign for Excellence, according to L. Michael Moskovis, vice president for institutional advancement and president of the WMU Foundation, which receives all private gifts made to the University. The six-year, \$55 million fund-raising campaign, publicly announced in April 1989, now stands at 85 percent of its goal with \$46.5 million in gifts and confirmed pledges.

The report to the board detailed June gifts of \$997,227 that pushed the year's total over the \$10 million mark.

Also contributing to the record total were several large payments of pledges made in previous years. Haworth Inc. of Holland paid \$4,755,240 of a \$5 million commitment to the campaign, making a significant impact on

the year's total. The gift from the Haworth family and company was announced in February 1989.

Other large pledge payments made during the 1990-91 fiscal year included \$500,000 of a \$2 million pledge from the Irving S. Gilmore Foundation of Kalamazoo for an addition to Shaw Theatre; \$500,000 of a \$2 million pledge from the Upjohn Co. of Kalamazoo to the campaign; and \$150,000, completing a \$500,000 gift, from the Kellogg Co. of Battle Creek for construction of the new business building.

Also during the year, an alumna of the University made anonymous gifts totaling more than \$800,000 and a Kalamazoo area couple made anonymous gifts totaling more than \$100,000.

These gifts and pledge payments combined account for \$6.8 million or 63 percent of the year's record total.

Moskovis says the record giving totals have put the Campaign for Excellence far ahead of its original schedule, but says a number of funding goals still remain to be met.

"Meeting the final 10 or 15 percent of the goal is always the most difficult part of any campaign," he says.

## Dolly named to position in adult learning services

Patricia A. Dolly has been named director of the Office of Adult Learning Services. She replaces Patricia L. Thompson, who died June 16.

Dolly has been an academic specialist in continuing education and a division chairperson/instructor in general education at Davenport College in Kalamazoo since 1988. In her new position at WMU, she will be responsible for overseeing efforts to counsel and advise the rapidly growing population of working adults and part-time students pursuing bachelor's degrees on campus and through the University's six regional centers. The office is part of the Division of Continuing Education.

Before joining the staff at Davenport, Dolly was employed by Rochester Products in Coopersville and by the Grand Rapids Public Schools.

Dolly earned her associate's degree from Grand Rapids Community College, her bachelor's degree from Aquinas College and her master's degree from WMU. She expects to earn a second master's degree this August and to complete a doctoral degree in 1993, both at WMU.



## University sets record with 1990-91 grant total

Sparked by dramatic increases in research funding, grants to the University set a record of \$12.3 million at the close of the 1990-91 fiscal year, the Board of Trustees was told at its July 26 meeting.

Grants of \$1,204,124 during June, the final month of the fiscal year, brought the year's total of external support for University programs to \$12,306,639, an increase of 23 percent or \$2.3 million over last year's record total of \$10 million.

This is the sixth consecutive year of record growth in external support for University projects. In the past five years, such support has increased by an average of \$1.8 million per year.

Increased funding in the area of University research was a prime ingredient in setting the record grant total, according to Donald E. Thompson, vice president for research. Research funding for the year jumped by 86 percent to just over \$7 million. The University's 1989-90 research funding totaled \$3,789,171 and set the previous record for research grants.

"The fact that research funding now makes up 57 percent of our total grant support confirms our role as a research and graduate intensive institution," Thompson says. "The growth has happened because people here have worked very hard. We have a strong faculty and they've learned to become tenacious. The efforts of the staff in the offices of research and sponsored programs as well as grants and contracts also have had a tremendous impact."

A steady increase in the number of federally funded projects on campus, Thompson says, is indicative of the University's growing role as a national competitor for research dollars. Federal grants to WMU increased last year by more than \$2 million and now make up a third of the University's grant total. Last fall, the largest grant in WMU's history was announced when the U.S. Department of Education agreed to commit \$5.2 million over five years to fund the Center for Research on Educational Accountability and Teacher Evaluation. About \$1 million of that

grant is included in the 1990-91 fiscal year total.

Thompson points out that the end of the 1990-91 fiscal year was the original target for University faculty to meet a challenge issued by President Haenicke during his first year of office. Using the 1984-85 total of \$3.9 million as a base, Haenicke challenged faculty members in 1986 to double that support by the end of the 1990-91 fiscal year. That goal was met two years after the challenge was issued. This year's total is more than triple the \$3.9 million challenge figure.

## Two new degree programs receive trustees' approval

WMU students soon will be able to enroll in two new doctoral degree programs.

The Board of Trustees July 26 approved proposals to offer a doctor of philosophy degree in statistics and a doctor of philosophy degree in geology with an emphasis in hydrogeology. The two programs will bring to 13 the number of doctoral programs available at WMU.

The Ph.D. degree in statistics is the revision and extension of WMU's existing doctoral degree in mathematics with a concentration in statistics.

The Ph.D. degree in geology with an emphasis in hydrogeology is designed for persons

## Tuition to increase 6.9 percent

The Board of Trustees July 26 set tuition and fees for the fall semester by approving a tuition increase of 6.9 percent over fall 1990 tuition and fee rates.

In keeping with past practice, the board had tabled the proposal at its June 28 meeting to allow time for public comment. The new rates will take effect with the start of the semester on Sept. 4.

## Washington heads race relations institute

Earl M. Washington has been named the first permanent director of the University's Institute for the Study of Race and Ethnic Relations.

His appointment, effective Aug. 1, 1991, was approved July 26 by the Board of Trustees.

"We are delighted that Dr. Washington has accepted this important position," said Provost Nancy S. Barrett. "The institute, under his leadership, will become a center for race relations research, and will attract scholars and scholarship that will support and enhance our University's commitment to diversity."

Washington came to WMU in 1970 as a faculty member in the Department of Communication. He served as an administrative assistant to the chairperson of that department in 1980-81 and directed the Black Col-



Washington

interested in leadership roles in teaching, research and applications of hydrogeology.

The doctoral degree in statistics will be offered beginning with the winter 1992 semester, while the doctoral degree in geology with an emphasis in hydrogeology will be offered beginning with the fall 1991 semester. Each degree will require 90 credit hours in course and dissertation work.

Both degree programs have been approved through the University's curricular review process and have been unanimously endorsed by the Academic Officers Committee of the Presidents Council of State Universities.

lege Program in the College of Arts and Sciences from 1984 to 1988. Since 1986, he has been assistant dean of the College of Arts and Sciences and will continue in that position along with his new job. The Institute for the Study of Race and Ethnic Relations will be housed in the College of Arts and Sciences and Washington will continue to report to Dean Douglas P. Ferraro.

An expert on intercultural/interracial communication, Washington earned his bachelor's, master's and doctoral degrees from WMU.

The Institute for the Study of Race and Ethnic Relations was established at WMU to promote academic inquiry into the nature, causes and potential programs for the solution of racial and ethnic conflicts in American society. The institute will collect, analyze and disseminate data with respect to racial and ethnic issues, and provide a database for scholars, government units, civil rights groups and other political organizations, community organizations and individuals.

## Library tours available

Tours of the newly expanded and renovated Waldo Library are available at 10 a.m., 11:30 a.m., 2 p.m., 4 p.m. and 6:30 p.m. Mondays through Fridays. To arrange a tour at another time, persons should call 7-5059.

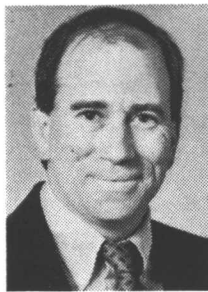
## Several appointments OK'd by trustees



Baxter



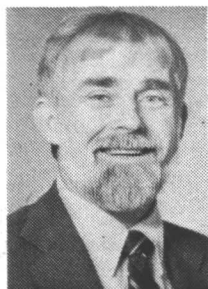
DeShon



Ginsberg



Gullickson



Hannaford



McNally

The appointments of several persons to new positions were approved July 26 by the Board of Trustees.

Arlen R. Gullickson was named chief of staff in the Evaluation Center, effective June 1, 1991. He replaces Zoe A. Barley, who earlier this year was appointed associate director of the center. He also was appointed to a tenure track position as a professor of counselor education and counseling psychology.

Gullickson comes to WMU from the University of South Dakota, where he held a dual appointment as a professor in the School of Education and in the Department of Computer Science. A faculty member there since 1973, he also served as coordinator of the South Dakota Rural Science and Math School Without Walls Project.

The board also approved the appointments of David S. DeShon as director of the School of Public Affairs and Administration and of Leonard C. Ginsberg as chairperson of the Department of Biological Sciences. Both were made effective July 1, 1991.

DeShon joined the Department of Economics faculty in 1964. He also has taught in the former College of General Studies and chaired its social science area for six years. He became a faculty member in the School of Public Affairs and Administration in 1989. He replaces Fredric J. Mortimore, who retired.

Ginsberg has been a WMU faculty member since 1977. His areas of interest include genetics, cell biology and embryology. He replaces Richard W. Pippen, who resigned as chairperson to return to the faculty.

## Exchange

**FOR SALE** — Sears Kenmore washer. Four cycle, three water levels. Excellent condition. \$95 or best offer. Call 344-2121.

**FOR SALE** — Solid rolltop desk, like new. Call 372-1088.

**FOR RENT** — Portage, two-bedroom, one-and-a-half-bath townhouse. Full basement, garage, deck. Quiet, professional neighborhood. \$510. Call Lynn at 7-2725 or 324-0965.

The trustees also approved the reappointment of Alonzo E. Hannaford as chairperson of the Department of Special Education, effective July 1, 1991. He has been in that position since 1986.

In other action, the board approved the appointment of Terry L. Baxter as director of the Sindecuse Health Center and chief of staff. She has been the center's acting chief of medical staff since last September and assumed her new title Aug. 1, 1991. She has been a WMU employee since 1987.

In a related move, the board approved the appointment of Donald T. McNally as associate to the vice president for student affairs, effective Aug. 1, 1991. He has been a WMU employee since 1970 and director of the Sindecuse Health Center since 1974.

The board also granted leaves of absence to these faculty members: Robert J. Aardema, engineering technology, from Aug. 19, 1991, to Dec. 22, 1991; and Rameshwar P. Sharma, mechanical engineering, from Aug. 19, 1991, to April 26, 1992.

And the trustees approved a professional development leave for E. Rozanne Elder, Institute for Cistercian Studies, from Feb. 1, 1992, to April 30, 1992.

The trustees also accepted these resignations: Mary Ann Davies, education and professional development, effective June 28, 1991; Dinah J. Eisenberg, collective bargaining and contract administration, effective Sept. 15, 1991; and Pamela D. McElroy, finance and commercial law, effective July 15, 1991.

## Jobs

The following list of vacancies is currently being posted through the Job Opportunity Program by employment services in the Department of Human Resources. Interested benefits eligible employees should submit a job opportunity transfer application or sign the appropriate bid sheet during the posting period.

S-01 and S-02 clerical positions are not required to be posted. Interested University employees may contact an employment services staff member for assistance in securing these positions.

(R) **Instructor** (1 Semester; .5 FTE), I-40, Speech Pathology and Audiology, 90/91-488, 7/30-8/5/91.

(R) **Assistant Professor** (Tenure Track), I-30, Speech Pathology and Audiology, 90/91-489, 7/30-8/5/91.

(R) **Assistant Professor** (Temporary; 1 Year), I-30, Mechanical Engineering, 91/92-002, 8/6-8/12/91.

(R) **Instructor** (Temporary; 1 Year), I-40, Business Information Systems, 91/92-011, 8/6-8/12/91.

(N) **Supervisor, Maintenance Services**, P-04, Physical Plant-B/E Maintenance, 91/92-014, 8/6-8/12/91.

(R) **Supervisor, Grounds**, P-04, Physical

## Obituaries

A memorial service for Robert D. Caine, who served on the Board of Trustees from 1968 to 1985, is being planned for 2 p.m. Monday, Aug. 12, in Kanley Chapel with a reception to follow at the Oaklands. He died Aug. 2 in Kalamazoo at age 87.

Caine retired in 1971 from the Brown Paper Co. of Kalamazoo as Caine vice president and director of administration. He was cited as a "model for his peers, both on the WMU governing board and in the Michigan Association of Governing Boards" in a May 17, 1985, Board of Trustees resolution granting him the title of trustee emeritus.

Caine served as chairperson of the board in 1974 and 1975. He chaired the presidential search committee in 1973.

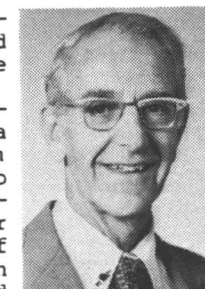
The resolution also recognized Caine's loyalty to and special efforts for the WMU Department of Paper and Printing Science and Engineering and the Paper Technology Foundation.

Persons may make memorial contributions to the Robert D. Caine Scholarship Fund in care of the WMU Foundation or to the charity of their choice.

Nathan L. Nichols, emeritus in physics, died June 17 in Augusta. He was 73.

A 1939 WMU graduate, Nichols was a faculty member from 1955 to 1981. He also was a high school teacher and a faculty member at the University of Michigan, Michigan State University and Alma College, where he served as chairperson of the physics department.

Memorial contributions may be made to the WMU Department of Physics or the American Cancer Society.



Nichols

Plant-L/G Maintenance, 91/92-015, 8/6-8/12/91.

(N) **Electrician I**, M-5, Physical Plant-B/E Maintenance, 91/92-016, 8/6-8/12/91.

(N) **Groundsperson/Laborer I** (6 positions), M-2, Physical Plant-L/G Maintenance, 91/92-017, 8/6-8/12/91.

(R) **Arborist**, M-5, Physical Plant-L/G Maintenance, 91/92-018, 8/6-8/12/91.

(N) **Custodian** (5 positions; 1st, 2nd or 3rd Shift), M-2, Physical Plant-Building Custodial and Support Services, 91/92-019, 8/6-8/12/91.

(N/R) **Custodian** (5 positions, 1st Shift), M-2, Physical Plant-Building Custodial and Support Services, 91/91-020, 8/6-8/12/91.

(C) **Secretary I**, S-04, Physical Plant-Building Custodial and Support Services, 91/92-021, 8/6-8/12/91.

(R) **Equipment Coordinator**, P-04, Athletics, 91/92-022, 8/6-8/12/91.

Please call the Applicant Information Service at 7-3669 for up-to-date information on the Job Opportunity Program and vacancies available to external applicants.

(C) Conversion

(N) New

(R) Replacement

WMU is an EO/AA employer

## Calendar

### AUGUST

#### Thursday/8

(and 9) Exhibit, "Art in Nature," photography by Eleanor DeVries, Battle Creek artist, 1240 Seibert Administration Building, 8 a.m.-noon and 1-5 p.m.

\* (thru 10) Ninth annual Ballet Teacher Seminar and Student Conference in the Russian Method, Dalton Center, all day.

#### Monday/12

\* (thru 16) Direct Instruction Conference, Dunbar Hall, all day.

#### Wednesday/14

Meeting, Human Subjects Institutional Review Board, Conference Room C, 3041 Seibert Administration Building, 8:15 a.m.

Writing workshop for the preparation of

doctoral dissertations, specialist projects and master's theses, 205 Bernhard Center, 3-4 p.m.

#### Thursday/15

Doctoral oral examination, "The Relationship Between Dropout and Peer Mentoring in an Adult High School Completion Program," Jo Ann Pastor, educational leadership, Tate Center, 3210 Sangren Hall, 9 a.m.

#### Monday/19

Doctoral oral examination, "A Comparison of Four Methods to Teach Complex Verbal Concepts Using a Computer-Assisted Instruction Program," John B. Connors, psychology, 283 Wood Hall, 9:30 a.m.

\* Admission charged

## WESTERN MICHIGAN UNIVERSITY WESTERN NEWS

Editor: Ruth A. Stevens; Staff Writers: Cheryl P. Roland, Michael L. Smith; Photographer: Neil G. Rankin.

Western News (USPS 362-210) is published by the Office of Public Information, B-207 Ellsworth Hall, Western Michigan University, 1201 Oliver St., Kalamazoo, MI 49008-5165, weekly during fall and winter semesters and bi-weekly during spring and summer sessions, except during vacation periods. Second class postage paid at Kalamazoo, MI 49008-5165.

Postmaster: Send address changes to Western News, Office of Public Information, Western Michigan University, 1201 Oliver St., Kalamazoo, MI 49008-5165.

Western News is distributed without charge to faculty and staff members, retirees, members of the Parents Association and other friends of the University including students, who may obtain copies at several campus locations.

Deadline: Items to be considered for publication should be submitted to the Office of Public Information by noon Tuesday of the week of publication. Offices that receive too many copies -- or too few copies -- are asked to call 387-4100. WMU is an equal opportunity/employer/affirmative action institution.