

WESTERN MICHIGAN UNIVERSITY WESTERN NEWS

Volume 16, Number 35

August 2, 1990

Grants top \$10 million, achieve record levels for fifth year in a row

Grants to the University have hit record levels for the fifth consecutive year, according to reports presented to the Board of Trustees at its July 27 meeting.

For the first time in its history, external support for University research and sponsored programs passed the \$10 million mark. The total of grants received for the 1989-90 fiscal year was \$10,004,640, surpassing last year's record by \$990,956 or 11 percent.

The trustees also learned that gifts received by the University during June totaled \$1,458,999. That figure is more than three times the amount received during June 1989. The gift total for the year was \$5,667,846, nearly the same as last year's total of \$5,677,375.

The fiscal year grant total was achieved with the help of a very successful final month of activity. Grants received by the University during June totaled \$2,314,716, an increase of 44 percent over last June's activity.

The 1989-90 grant total represents the fifth consecutive year of record growth in external support for University projects. Since the end of the 1984-85 fiscal year, such support has increased by an average of \$1.2 million per year. During the past three years, the University has received more than \$27 million in external support.

Donald E. Thompson, vice president for research, said the continued growth in ex-

ternal funding for the entire period is impressive, but each year's record should be recognized for the work that went into achieving the annual goals.

"We set records in 1988 and 1989 at \$8 million and \$9 million, respectively, but then each year we started at zero again and made phenomenal efforts to match and exceed the previous year's total," he said. "I'm delighted at this year's success for our faculty members and for the staff in the Office of Research and Sponsored Programs. They've all worked hard."

Thompson attributed the continued growth to increasing numbers of WMU faculty members undertaking research and seeking outside support for that research. Their success in obtaining support, particularly at the highly competitive federal levels, he said, is noteworthy.

"We've started seeking grants in a very competitive pool," he said, "and we're finding success. Our faculty members have worked hard and found new ways to collaborate on research and to get support for that research."

Several academic appointments OK'd by Board

Several academic personnel changes were approved by the Board of Trustees at its June 29 meeting.

Among those was the previously announced appointment of Douglas P. Ferraro as dean of the College of Arts and Sciences. Ferraro, whose appointment with tenure in the Department of Psychology was effective July 15, 1990, has been professor of psychology and psychiatry and chairperson of psychology at the University of New Mexico.

The trustees also approved the appointment of Floyd L. McKinney as interim dean of the College of Education, effective July 15, 1990. He replaces Arnold M. Gallegos, dean of that college since 1984, whose return to the faculty as professor with tenure in the Department of Education and Professional Development, effective Aug. 20, 1990, also was approved by the Board. In addition, the Board approved a sabbatical leave for Gallegos for the 1990-91 academic year to research and assist in the development of international evaluation and consulting activities for the Evaluation Center.

McKinney has been associate dean for graduate programs, research and planning in the College of Education since 1989.

The Board also approved the appointment of four department chairpersons and one school director. They are:

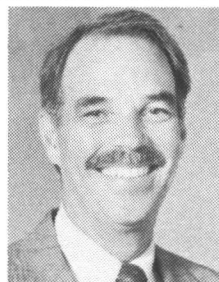
- * Arvon D. Byle as chairperson of the Department of Paper and Printing Science and Engineering, effective July 1, 1990. A faculty member since 1963, Byle has been serving as interim chairperson of the department since 1988. He replaces Richard B. Valley, who has retired.

- * John M. Hanley as chairperson of the Department of Speech Pathology and Audiology, effective July 1, 1990. A faculty member since 1980, he replaces Robert L. Erickson, who resigned to return to teaching.

- * Peter M. Judd as director of the School of Social Work, effective July 26, 1990. His appointment includes being named a professor with tenure in the School of Social Work. Since 1986, he has been acting director and professor in the School of Social Work at Salem State College in Massachusetts. He replaces Philip H. Kramer, who resigned to return to teaching.

- * Thomas F. Piatkowski as chairperson of the Department of Electrical Engineering, effective Aug. 1, 1990. He comes to WMU from the State University of New York at Binghamton, where he has been a professor of computer science since 1985. He served as chairperson of the department from 1985 to 1988. His position at WMU includes a joint appointment as professor of electrical engineering and computer science with tenure in electrical engineering. He replaces Cassius A. Hesselberth, who is retiring.

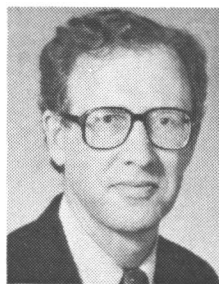
- * Eugene W. Thompson as chairperson of the Department of Educational Leadership, effective July 1, 1990. His appointment includes being named an associate professor with tenure in the Department of Educational Leadership. He comes to WMU from Bowling Green State University, where he has served as chairperson of the Department of Educational Administration and Supervision since 1989. He replaces John W. Dobbs, who has been serving as interim chairperson



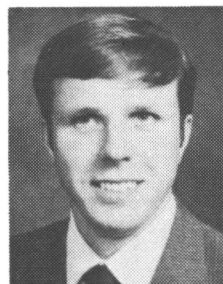
Byle



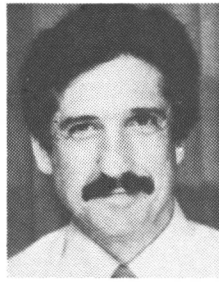
Hanley



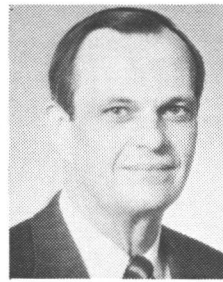
Hodges



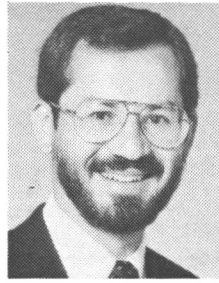
Joyce



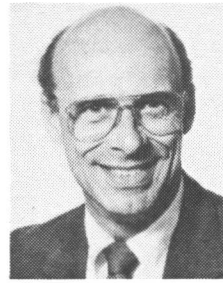
Judd



McKinney



Pence



Thompson

of the department since 1989.

The trustees also approved the appointment of Richard L. Hodges as interim chairperson of the Department of Accountancy, effective Aug. 6, 1990. A faculty member since 1985, he replaces William R. Welke, who resigned to return to teaching.

In addition, the Board approved the appointment of Dennis D. Pence as associate director of academic computing services on a half-time basis, effective July 1, 1990. This new position results from a reorganization of activities in academic computing services. A faculty member in the Department of Mathematics and Statistics since 1984, Pence will be responsible for the Division of Research Computation Support Services within academic computing services.

(Continued on page two)

Board approves general fund budget of \$132.5 million

The Board of Trustees July 27 approved a 1990-91 general fund operating budget of \$132,532,300.

The budget is based on a 6.5 percent increase in tuition and required fees over last fall and "reasonable, modest" increases in compensation, President Haenicke told the Board.

Projected expenditures for the new fiscal year, which began July 1, amount to \$134,065,000, a difference of \$1.5 million that will be made up during the course of the year through natural attrition, Haenicke said.

Haenicke renewed his pledge of employment security, saying that no personnel would be released because of financial necessity. However, he said the administration would exercise "position control," which includes reviewing any position that becomes vacant.

Haenicke told the Board that legislative sources in both political parties in Lansing have said that budget cuts can be expected after the fall elections, adding to uncertainty in the budget process.

The projected expenditures include \$302,000 in student financial aid, up 6.5 percent over last year, the same percentage increase as tuition. It is the standard practice of the University to increase financial aid by the same percentage that tuition is increased.

In other action, the Board authorized the administration to enter into a five-year lease agreement with the Capital Area United Way in Lansing for the University's regional center there. The center will be moving from 309 N. Washington Square to the United Way's Community Services Center at 300 N. Washington Square.

The Board also authorized the administration to enter into a two-year lease agreement with the Douglass Community Association for space for the University's Center for Developmentally Disabled Adults. The center has a contract with the Kalamazoo County Human Services Department to provide training to developmentally disabled adults in the county.

And the Board authorized the administration to enter into an easement agreement with the Association of the Diocese of Western Michigan to provide access to St. Aidan's Chapel on campus.

Board approves tuition increase for 1990-91

The Board of Trustees July 27 approved a 1990-91 tuition and required fees rate that amounts to a 6.5 percent increase over those same charges assessed last fall. The Board had tabled the measure at its June 29 meeting to allow for public comment.

Here are the rates per credit hour for tuition, with last year's rates in parentheses: resident undergraduate lower division (freshman-sophomore), \$65.75 (\$65); resident undergraduate upper division (junior-senior), \$72.50 (\$71.25); resident graduate, \$92.75 (\$90.25); non-resident undergraduate lower division, \$169 (\$161.75); non-resident undergraduate upper division, \$186 (\$177.75); non-resident graduate, \$227.25 (\$216.50).

On April 27, the Board changed the method for the assessment of tuition and required fees, effective this fall. In the past, some fees were mixed with tuition rates and other fees were separately assessed. Now, all fees will be bundled.

The new enrollment fee of \$288 for a full-time academic year of two semesters incorporates all of the required fees and includes the computer fee, health fee and facilities fee. It does not include a student government-enacted social fee.

Upon recommendation by President Haenicke, the trustees also voted to delay the implementation of a new all sports pass fee approved at the April 27 meeting. The fee was to be \$15 per semester and \$7.50 per session for full-time students and half those amounts for part-time students. Haenicke said he wanted to conduct further discussions with constituency groups. The delay will postpone plans to upgrade student recreational facilities, he said.

In other action July 27, the Board approved a recommendation effective this fall to increase by \$5 per credit hour the differential continuing education students pay for tuition.

Since 1981, the continuing education tuition rate has been determined by adding \$10

per credit hour to the on-campus resident upper division rate for undergraduates and the resident graduate rate for graduate students. The differential, which included a \$2.75 per credit hour facility fee, was intended to pay for some of the additional expenses for providing off-campus education.

"Due to the construction of a new facility in Grand Rapids and relocation and renovation costs at regional centers in Benton Harbor and Lansing, as well as a proposed higher education center in Muskegon, it is appropriate to increase this differential to \$15 per credit hour," said Richard T. Burke, vice president for regional education and economic development.

Obituary

Robert S. Bowers, who served as chairperson of the Department of Economics from 1959 to 1974, died July 31 in Kalamazoo. He was 78.

Bowers was an economics faculty member from 1937 until he retired with emeritus status in 1979. His academic interests were in the study and teaching of labor problems and related areas.

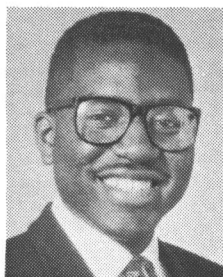
He was appointed by the State Labor Mediation Board as a fact-finder from 1967 to 1970 and served as a state arbitrator from 1960 to 1970.

A memorial service is being planned. Persons may make contributions to the American Friends Service Committee, 1501 Cherry St., Philadelphia, PA 19102.

Two alumni join staff in Division of Minority Affairs



Bell



Lewis

Two new staff members have been appointed in the Division of Minority Affairs.

They are: Lenzy E. Bell as special projects coordinator and student organization liaison for the division's retention unit; and Michael D. Lewis as coordinator for the Martin Luther King Jr./Cesar Chavez/Rosa Parks College Day Visitation Program.

A native of Benton Harbor, Bell has been employed by the Consumers Power Co. in Kalamazoo since 1981, the year he received a bachelor's degree from WMU.

He replaces Diana E. Hernandez, who now serves as director of the King/Chavez/Parks Program.

Lewis is a native of Detroit. He has been a branch manager for Manufacturers National Bank in Detroit since 1988, the year he graduated with a bachelor's degree from WMU.

He replaces Pedro J. Rosario, who now serves as a conference coordinator in the Office of Conferences and Institutes.

Appointments (Continued from page one)

The trustees also approved a return to the faculty for Mary L. Taylor, assistant dean of University libraries. She resumed her duties as professor of University libraries with tenure, effective July 1, 1990.

In other action, the Board approved the joint appointments and changes in department home and status for Ralph C. Chandler and Peter Kobrak, professors of political science. Effective July 1, 1990, Chandler has the title of professor of public affairs and political science and Kobrak is professor of public administration and political science. Both have tenure in the School of Public Affairs and Administration.

In addition, the Board accepted the previously announced resignation of Provost George M. Dennison, effective Sept. 2, 1990. He will become president of the University of Montana.

The Board also accepted these other resignations: Ashraf M. Genaidy, industrial engineering, effective Aug. 5, 1990; V. Joy Grif-

Jobs

The listing below is currently being posted by employment services in the Department of Human Resources. Interested fringe benefit eligible employees should submit a job opportunity transfer application or sign the appropriate bid sheet during the posting period.

S-01 and S-02 clerical positions are not required to be posted. Interested University employees may contact an employment services staff member for assistance in securing these positions.

(R) **Clerk III**, S-04, Academic Records, 90/91-045, 7/31-8/6/90.

(R) **Assistant Project Director-P.A.** (.5 FTE; 20 hours/week; term ends 6/30/91), P-04, Physician Assistant Program, 90/91-050, 7/31-8/6/90.

(N) **Research Associate-Aircraft and Automotive Engineering** (Term ends 12/31/90), X-06, Aircraft and Automotive Engineering, 90/91-051, 7/31-8/6/90.

(N) **Administrative Assistant II**, P-02, Education and Professional Development, 90/91-052, 7/31-8/6/90.

(R) **Custodian** (Seven positions; first, second or third shift), M-2, University Facilities/Custodial Services, 90/91-053, 7/31-8/6/90.

(N) New

(R) Replacement

WMU is an EEO/AA employer

Exchange

FOR SALE — Condominium: one-bedroom townhouse, one-half mile west of campus. Redecorated and central air. Need quick sale. Excellent investment for permanent occupancy or rental. Available by fall semester. Call 7-2400.

FOR SALE — 1985 Honda Prelude. 57,000 miles, new battery, brakes, exhaust system and tires. Excellent condition. \$7,500 or best offer. Call Laurie at 7-3533 or 382-2363.

FOR SALE — 1989 Chevy 4x4 short box Silverado pick-up truck. Cruise, air, tilt wheel, power windows/locks, AM/FM/cassette with graphic equalizer. 13,000 miles. Automatic transmission with overdrive, 350 V-8 engine. Asking \$14,000. Call 7-2922 until 3:30 p.m. or 624-6276 later.

FOR SALE — Ethan Allen yellow 80-inch sofa; brass and glass coffee table. Call 344-3295 after 5 p.m.

FOR SALE — 826 Fulton, charming two-bedroom, one-story home on shaded lot. Spotless, tastefully finished and ready to move into. \$31,000. Call Ruth Solomon at 7-5232 or 349-8899.

Media

Two members of the University community will be guests in the coming weeks on "Focus," a five-minute interview produced by the Office of Public Information. "Focus" is scheduled to air on these Saturdays at 6:10 a.m. on WKPR-AM (1420) and at 5:45 p.m. on WKZO-AM (590) with the following speakers and topics: Louise S. Forsleff, associate vice president for student services, on suicide, Aug. 4; and Judith K. Morris, social work, on improving child care, Aug. 11.

Calendar

AUGUST

Thursday/2

*(thru 11) Eighth annual Ballet Teacher Seminar and Student Conference in the Russian Method, Dalton Center, all day; Friday, Aug. 10: concluding workshop performance, Dalton Center Multi-Media Room, 7:30 p.m.

*(thru 3) 11th annual Phil Mattson Vocal Jazz Workshop, Dalton Center, all day; Friday, Aug. 3: concluding workshop performance, Dalton Center Recital Hall, 8 p.m.

(thru Sept. 21) Exhibit, "Landscapes, Birds and Flowers," by Molly Jo Bonner, watercolorist, 1240 Seibert Administration Building, weekdays, 8 a.m.-noon and 1-5 p.m.

Monday/6

*(thru 10) Management and executive development seminar, "Train-the-Trainer," Edward E. Jones Jr., president, Management Training Consultants, Wakefield, R.I., Fetzer Center, 8 a.m.-4 p.m.

Monday/13

Meeting, ANAD, self-help support group for anorexics, bulimics and their families, St. Aidan's Chapel, 7 p.m. For more information call Elaine at 7-1850.

Wednesday/15

Graduate College writing workshop for the preparation of doctoral dissertations, specialist projects and master's theses, Red Room C, Bernhard Center, 2-3 p.m.

*Admission charged

WESTERN MICHIGAN UNIVERSITY WESTERN NEWS

Editor: Ruth A. Stevens; Staff Writers: Cheryl P. Roland, Michael L. Smith; Photographer: Neil G. Rankin.

Western News (USPS 362-210) is published by the Office of Public Information, B-207 Ellsworth Hall, Western Michigan University, 1201 Oliver St., Kalamazoo, MI 49008-5165, weekly during fall and winter semesters and bi-weekly during spring and summer sessions, except during vacation periods. Second class postage paid at Kalamazoo, MI 49008-5165.

Postmaster: Send address changes to Western News, Office of Public Information, Western Michigan University, 1201 Oliver St., Kalamazoo, MI 49008-5165.

Western News is distributed without charge to faculty and staff members, retirees, members of the Parents Association and other friends of the University including students, who may obtain copies at several campus locations.

Deadline: Items to be considered for publication should be submitted to the Office of Public Information by noon Tuesday of the week of publication. Offices that receive too many copies -- or too few copies -- are asked to call 387-4100. WMU is an equal opportunity/employer/affirmative action institution.

fin, health, physical education and recreation, effective June 10, 1990; Milvern K. Ivey, music, effective Aug. 19, 1990; Michael R. Payne, economics, effective June 30, 1990; Magda Pedraza, Counseling Center, effective June 30, 1990; David Pocock, music, effective April 20, 1990; Menahem Spiegel, economics, effective May 2, 1990; and Kim D. White, communication, effective April 28, 1990.

The Board also approved leaves of absence for these faculty members: Christian R. Hirsch, mathematics and statistics, from Sept. 1, 1990, to Aug. 23, 1991; Daniel E. Peacock, engineering technology, from April 16, 1990, to April 27, 1991; Gail M. Stephens, educational leadership, from Aug. 20, 1990, to Aug. 19, 1991; and Robert A. Wertkin, social work, from Aug. 20, 1990, to Dec. 31, 1990.

In addition, the trustees granted tenure to Kamlesh Sharma, general studies, effective July 1, 1990.