



Western Michigan University  
ScholarWorks at WMU

---

Legacy Scout Tickets from Pure Oil Company

---

8-20-2021

**MGRRE\_PureOilScoutTickets\_Bowen, S & B\_1\_21015127800000**

MGRRE

*Western Michigan University*

Follow this and additional works at: <https://scholarworks.wmich.edu/pure>



Part of the Geology Commons

---

#### WMU ScholarWorks Citation

MGRRE, "MGRRE\_PureOilScoutTickets\_Bowen, S & B\_1\_21015127800000" (2021). *Legacy Scout Tickets from Pure Oil Company*. 662.

<https://scholarworks.wmich.edu/pure/662>

This Document is brought to you for free and open access via ScholarWorks at WMU. It has been accepted for inclusion in Legacy Scout Tickets from Pure Oil Company by an authorized administrator of ScholarWorks at WMU. See the National Digital Catalogue - Science Base Catalogue for more collections submitted by MGRRE.



---

**MGRRE\_PureOilScoutTickets\_Bowen, S & B\_1\_21015127800000**

API 21015127800000

Permit Number 12780

Lease Name Bowen, S & B

Well Number 1

County Barry

Township 03N

Range 10W

Section 6

2021 DEQ or Pure co\_name Zellman, Louis

Pure Number 73

Latitude 42.67333

Longitude -85.53722

# THE PURE OIL COMPANY LOCATION REPORT

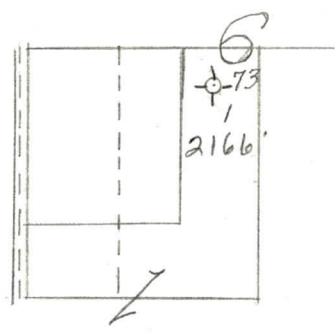
Date November 20, 1946 A.F.E. No. \_\_\_\_\_  
 Division Mich. Producing District \_\_\_\_\_ Lease S. & B. Bowen  
 Acres \_\_\_\_\_ Lease No. \_\_\_\_\_ Elevation \_\_\_\_\_ Well No. 1 (Serial No. 73)  
 Quadrangle NE NE SW Sec. 6 Twp. 3 N Rge. 10 W Twp. Yankee Springs  
 Survey \_\_\_\_\_ County Barry State Michigan  
 Operator Louis Zellman Map Yankee Springs Township, Barry County

<u>400</u>	<u>400</u>	Feet from North Line of Lease
<u>350</u>	<u>350</u>	" " East " " "
		" " South " " "
		" " West " " "
<u>400</u>	<u>400</u>	Feet from North Line of Section
<u>350</u>	<u>350</u>	" " East " " "
		" " South " " "
		" " West " " "

**LEGEND**

- Location
- ☀ Gas Well
- Oil Well
- ☀ Gas - Distillate Well
- or ○ Dry Hole
- Dry Showing Oil
- ☀ Dry Showing Gas
- ⊗ Abandoned Location
- ☀ or ☀ Abandoned Gas Well
- or ● Abandoned Oil Well
- or ○ Input Well

*Re*



Scale \_\_\_\_\_

Remarks: \_\_\_\_\_  
 \_\_\_\_\_  
 \_\_\_\_\_

Submitted by CB Civil Engineer Approved by \_\_\_\_\_ Division Manager  
 Approved by \_\_\_\_\_ Vice-President - General Manager