



Western Michigan University
ScholarWorks at WMU

Legacy Scout Tickets from Pure Oil Company

8-20-2021

**MGRRE_PureOilScoutTickets_Kaiser, Edward &
Opal_1_21015128620000**

MGRRE

Western Michigan University

Follow this and additional works at: <https://scholarworks.wmich.edu/pure>



Part of the Geology Commons

WMU ScholarWorks Citation

MGRRE, "MGRRE_PureOilScoutTickets_Kaiser, Edward & Opal_1_21015128620000" (2021). *Legacy Scout Tickets from Pure Oil Company*. 663.

<https://scholarworks.wmich.edu/pure/663>

This Document is brought to you for free and open access via ScholarWorks at WMU. It has been accepted for inclusion in Legacy Scout Tickets from Pure Oil Company by an authorized administrator of ScholarWorks at WMU. See the National Digital Catalogue - Science Base Catalogue for more collections submitted by MGRRE.



MGRRE_PureOilScoutTickets_Kaiser, Edward & Opal_1_21015128620000

API 21015128620000

Permit Number 12862

Lease Name Kaiser, Edward & Opal

Well Number 1

County Barry

Township 02N

Range 09W

Section 33

2021 DEQ or Pure co_name Wolverine Environmental Production, Incorporated

Pure Number 74

Latitude 42.51071

Longitude -85.36819

THE PURE OIL COMPANY LOCATION REPORT

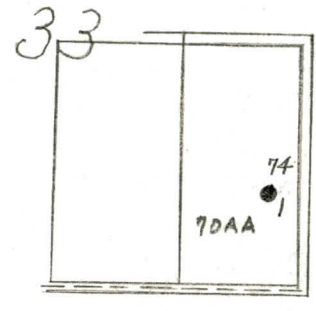
Date Dec. 24, 1946 A.F.E. No. _____
 Division Mich. Producing District _____ Lease Edward & Opal Kaiser
 Acres _____ Lease No. _____ Elevation _____ Well No. 1 (Serial No. 74)
 Quadrangle NE SE SE Sec. 33 Twp. 2 N Rge. 9 W Twp. Hope
 Survey _____ County Barry State Michigan
 Operator Universal Drilling Co. Map Hope Township, Barry County

<u>330</u>	<u>330</u>	Feet from North Line of Lease
<u>990</u>	<u>990</u>	" " East " " "
		" " South " " "
		" " West " " "
<u>330</u>	<u>330</u>	Feet from North Line of Section
<u>990</u>	<u>990</u>	" " East " " <u>1/4</u>
		" " South " " "
		" " West " " "

LEGEND

- Location
- ☀ Gas Well
- Oil Well
- ☀ Gas - Distillate Well
- ∅ or ○ Dry Hole
- Dry Showing Oil
- ☀ Dry Showing Gas
- ⊗ Abandoned Location
- ☀ or ⊗ Abandoned Gas Well
- or ⊗ Abandoned Oil Well
- or ○ Input Well

Rev



Scale _____

Remarks: _____

Submitted by CB Civil Engineer Approved by _____ Division Manager
 Approved by _____ Vice-President - General Manager