



Western Michigan University
ScholarWorks at WMU

Legacy Scout Tickets from Pure Oil Company

8-20-2021

MGRRE_PureOilScoutTickets_Forster, Peter_1_21017006519000

MGRRE

Western Michigan University

Follow this and additional works at: <https://scholarworks.wmich.edu/pure>



Part of the Geology Commons

WMU ScholarWorks Citation

MGRRE, "MGRRE_PureOilScoutTickets_Forster, Peter_1_21017006519000" (2021). *Legacy Scout Tickets from Pure Oil Company*. 666.

<https://scholarworks.wmich.edu/pure/666>

This Document is brought to you for free and open access via ScholarWorks at WMU. It has been accepted for inclusion in Legacy Scout Tickets from Pure Oil Company by an authorized administrator of ScholarWorks at WMU. See the National Digital Catalogue - Science Base Catalogue for more collections submitted by MGRRE.



MGRRE_PureOilScoutTickets_Forster, Peter_1_21017006519000

API 21017006519000

Permit Number 651

Lease Name Forster, Peter

Well Number 1

County Bay

Township 14N

Range 04E

Section 26

2021 DEQ or Pure co_name Smith, C.A.

Pure Number 3

Latitude 43.58809

Longitude -83.96269

THE PURE OIL COMPANY

DATE February 19, 1934

LOCATION REPORT

No. 3

STATE Michigan COUNTY Bay DIST. Monitor TWP. Monitor SEC. 26 TOWN 14 N RANGE 4 E
WELL No. 1 (SERIAL No. 3) FARM Peter Foster ACRES

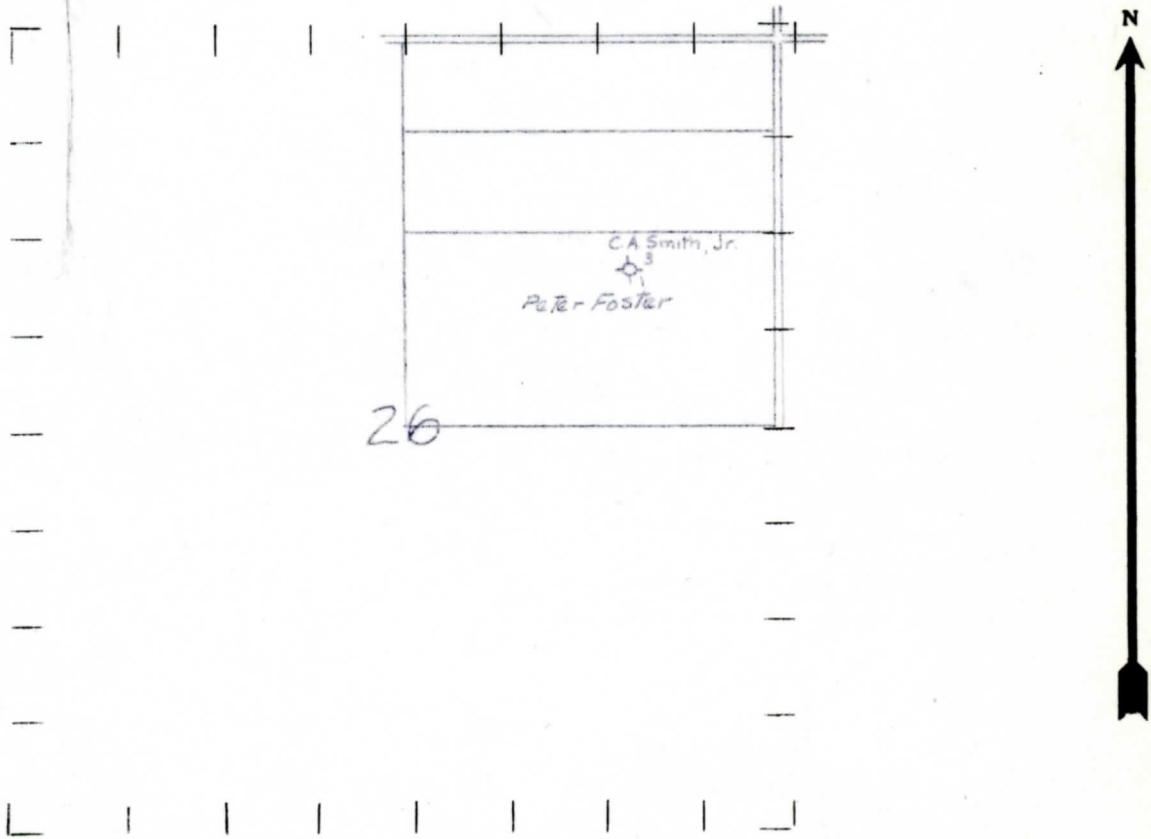
NAME OF STREAM OR WATERS _____ QUADRANGLE NW-SE-NE
OPERATOR C. A. Smith, Jr. MAP Monitor Township, Bay County

_____ Feet from North Line of Farm
_____ " " East " " "
_____ " " South " " "
_____ " " West " " "
1660 Feet from North Line of Section
1000 " " East " " "
_____ " " South " " "
_____ " " West " " "

LEGEND

- LOCATION
- ① RIG
- ⊕ DRILLING
- ⊛ GAS WELL
- OIL WELL
- ⊙ SMALL OIL WELL
- ⊛ DRY HOLE
- ⊛ DRY SHOWING OIL
- ⊛ DRY SHOWING GAS
- ⊙ ABANDONED LOCATION
- ⊛ ABANDONED GAS WELL
- ⊙ ABANDONED OIL WELL

NOTE: Below make tracing from map, (when no map is obtainable make sketch) showing farm, center of section, this location with measurements and also wells, dry holes, or other locations in the vicinity of this location. Make copy to keep for reference and send original to Columbus office.



REMARKS:
_____ Elevation 601' - Marshall 920' - Total Depth 1000' _____

SIGNED

R. L. Yeager
Superintendent or Foreman.