



Western Michigan University
ScholarWorks at WMU

Legacy Scout Tickets from Pure Oil Company

8-20-2021

MGRRE_PureOilScoutTickets_Atlantic Salt Company_1_None

MGRRE

Western Michigan University

Follow this and additional works at: <https://scholarworks.wmich.edu/pure>



Part of the Geology Commons

WMU ScholarWorks Citation

MGRRE, "MGRRE_PureOilScoutTickets_Atlantic Salt Company_1_None" (2021). *Legacy Scout Tickets from Pure Oil Company*. 667.

<https://scholarworks.wmich.edu/pure/667>

This Document is brought to you for free and open access via ScholarWorks at WMU. It has been accepted for inclusion in Legacy Scout Tickets from Pure Oil Company by an authorized administrator of ScholarWorks at WMU. See the National Digital Catalogue - Science Base Catalogue for more collections submitted by MGRRE.



MGRRE_PureOilScoutTickets_Atlantic Salt Company_1_None

API None

Permit Number None

Lease Name Atlantic Salt Company

Well Number 1

County Bay

Township 14N

Range 05E

Section 14

2021 DEQ or Pure co_name Atlantic Salt Company (1876)

Pure Number 4

Latitude 43.6156664

Longitude -83.846495

THE PURE OIL COMPANY
LOCATION REPORT

No. 4

DATE February 26, 1934

STATE Michigan COUNTY Bay DIST. Hampton TWP. Hampton SEC. 14 TOWN 14 N. RANGE 5 E.
PREC.

WELL No. 1 (SERIAL No. 4) FARM Atlantic Salt Company ACRES

NAME OF STREAM OR WATERS QUADRANGLE

OPERATOR Atlantic Salt Company MAP Hampton Township, Bay County

Feet from North Line of Farm

East " " "

South " " "

West " " "

Feet from North Line of Section

East " " "

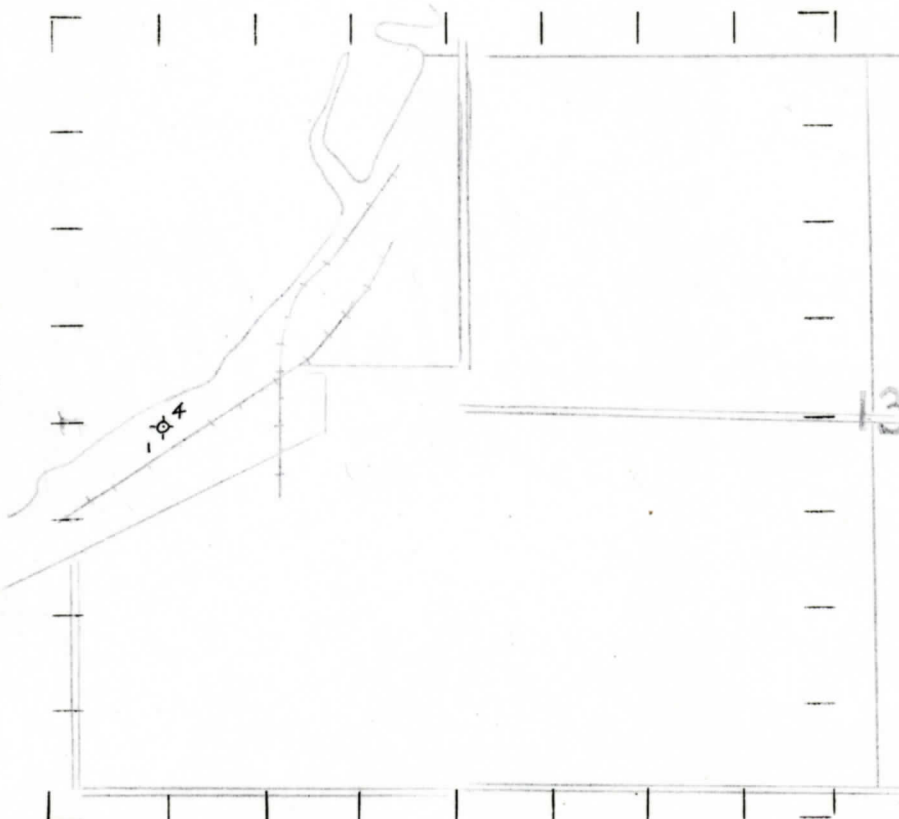
South " " "

West " " "

LEGEND

- O LOCATION
- ① RIG
- ⊕ DRILLING
- ⊙ GAS WELL
- OIL WELL
- ⊙ SMALL OIL WELL
- ⊕ DRY HOLE
- ⊙ DRY SHOWING OIL
- ⊙ DRY SHOWING GAS
- ⊙ ABANDONED LOCATION
- ⊙ ABANDONED GAS WELL
- ⊙ ABANDONED OIL WELL

NOTE: Below make tracing from map, (when no map is obtainable make sketch) showing farm, center of section, this location with measurements and also wells, dry holes, or other locations in the vicinity of this location. Make copy to keep for reference and send original to Columbus office.



Elevation 592'
Drift 0-85'
Parma Sand 585-635'
Up. Marshall 830-920'
Berea 2118-2306'
Traverse 2585-2865'
Total Depth 2865'

REMARKS:

Location by Geological Department Dry Hole - Completed 1885-1886

SIGNED

R. L. Yeager
Superintendent or Foreman.