



Western Michigan University
ScholarWorks at WMU

Legacy Scout Tickets from Pure Oil Company

8-20-2021

MGRRE_PureOilScoutTickets_Clements et al_1_21017010210000

MGRRE

Western Michigan University

Follow this and additional works at: <https://scholarworks.wmich.edu/pure>



Part of the Geology Commons

WMU ScholarWorks Citation

MGRRE, "MGRRE_PureOilScoutTickets_Clements et al_1_21017010210000" (2021). *Legacy Scout Tickets from Pure Oil Company*. 671.

<https://scholarworks.wmich.edu/pure/671>

This Document is brought to you for free and open access via ScholarWorks at WMU. It has been accepted for inclusion in Legacy Scout Tickets from Pure Oil Company by an authorized administrator of ScholarWorks at WMU. See the National Digital Catalogue - Science Base Catalogue for more collections submitted by MGRRE.



MGRRE_PureOilScoutTickets_Clements et al_1_21017010210000

API 21017010210000

Permit Number 1021

Lease Name Clements et al

Well Number 1

County Bay

Township 17N

Range 04E

Section 23

2021 DEQ or Pure co_name PInconning Oil Company

Pure Number 13

Latitude 43.86517

Longitude -83.95125

THE PURE OIL COMPANY
LOCATION REPORT

No. 13

DATE June 27, 1930

STATE Michigan COUNTY Bay DIST. TWP. Pinconning SEC. 23 TOWN 17N RANGE 4E

WELL No. 1 (SERIAL No. 13) FARM E. Clements ACRES

NAME OF STREAM OR WATERS QUADRANGLE NW¹ - NE¹

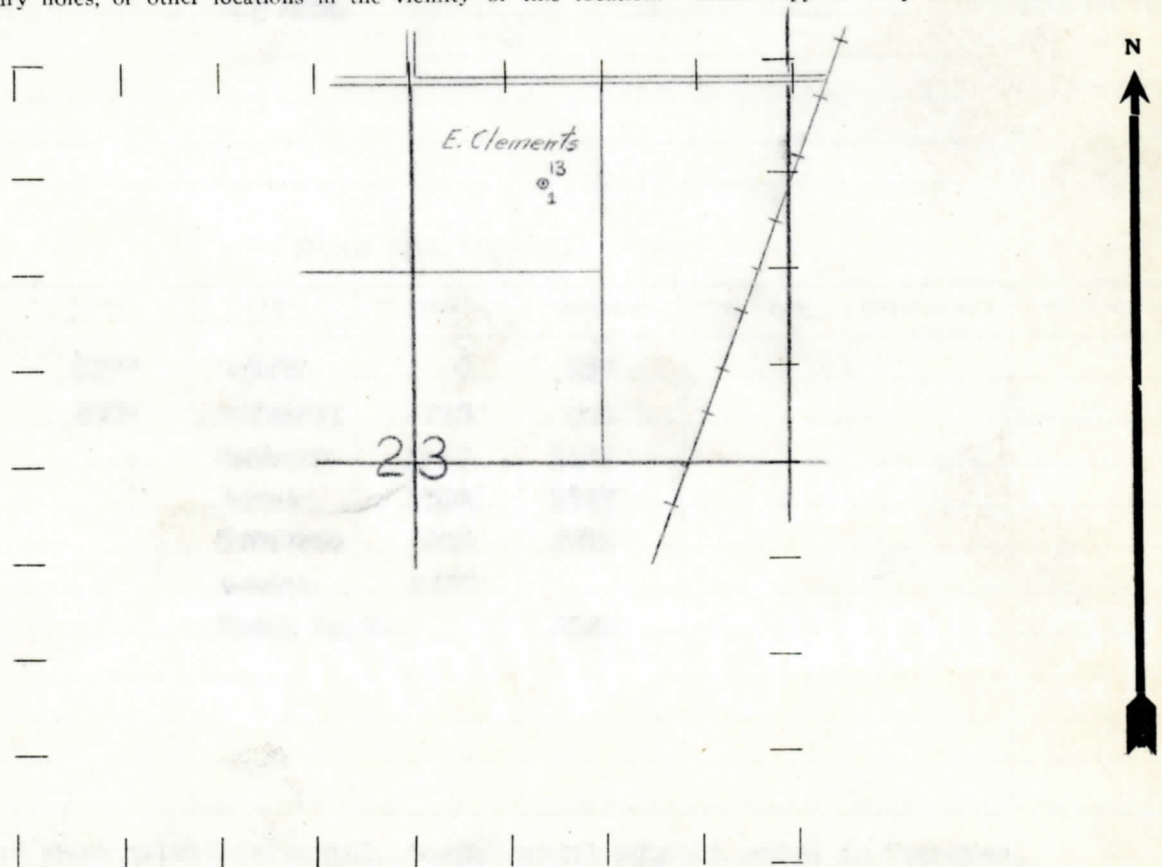
OPERATOR Pinconning Oil Company MAP Pinconning Twp., Bay County

Feet from North Line of Farm
 400 " " East " " "
 600 " " South " " "
 " " West " " "
 720 Feet from North Line of Section
 1720 " " East " " "
 " " South " " "
 " " West " " "

LEGEND

- LOCATION
- ⊕ RIG
- ⊕ DRILLING
- ⊗ GAS WELL
- OIL WELL
- ⬮ SMALL OIL WELL
- ◇ DRY HOLE
- ◆ DRY SHOWING OIL
- ⊗ DRY SHOWING GAS
- ⊖ ABANDONED LOCATION
- ⊗ ABANDONED GAS WELL
- ⬮ ABANDONED OIL WELL

NOTE: Below make tracing from map, (when no map is obtainable make sketch) showing farm, center of section, this location with measurements and also wells, dry holes, or other locations in the vicinity of this location. Make copy to keep for reference and send original to Columbus office.



REMARKS:

SIGNED

Superintendent or Foreman.

Form 243 10M 6-19-29 P100 POCO

THE PURE OIL COMPANY

Michigan Producing DIVISION

DATE, 7-14-33

COMPLETION RECORD

No. 13

STATE Michigan COUNTY Bay DIST. TWP. Pinconning SEC. 23 TOWN 17th RANGE 4E

WELL No. 1 (SERIAL No. 13) FARM E. Clements ACRES

NAME OF STREAM OR WATERS QUADRANGLE NW-NE

OPERATOR Pinconning Oil Co. MAP Pinconning Twp., Bay County

LOCATION REPORT SENT IN (DATE) 6-23-30

WELL STARTED (DATE) 7-18-30 WELL COMPLETED (DATE) 7-13-33

Oil Well	GAS WELL	DRY HOLE	ABANDONED WELL
----------	----------	----------	----------------

El. 609.1

CROSS OUT THREE OF THE ABOVE
WELL RECORD

DATE OF SHOT NUMBER OF QUARTS

1st 24 HOURS PRODUCTION	Dry Hole	BARRELS OR FEET
2nd " " "		" " "
3rd " " "		" " "
4th " " "		" " "
5th " " "		" " "

SAND AND CASING

CASING SIZE	WEIGHT	CASING Feet Inches	SAND Name and Nature	TOP	BOTTOM	TOP PAY	BOTTOM PAY	SALT WATER
10"		50' 350'	Drift	0	50' 150			
8 1/2"		855'	Marshall	295	400			
			Sambury	1496	1522			
			Berea	1522	1545			
			Traverse	2023	2425			
			Dundee	2808				
			Total Depth		3020			

REMARKS Very light show of oil in Berea. Small amount of salt water in Traverse, occurring between 2023 and 2130. Exact depth uncertain. Small show of oil 2865-2866 (?). Very light show of oil at 2885 (?). Tools lost in hole at 3020, which were not fished out. Abandoned but not plugged.

NOTE:—MAKE COPY TO KEEP FOR REFERENCE AND SEND ORIGINAL TO CHICAGO OFFICE. LIST MATERIAL CHARGEABLE TO WELL ON OTHER SIDE.

SIGNED G.H. Bell Supt. or Foreman