



Western Michigan University  
ScholarWorks at WMU

---

Legacy Scout Tickets from Pure Oil Company

---

8-20-2021

**MGRRE\_PureOilScoutTickets\_Dahlke\_1\_21017027490000**

MGRRE

*Western Michigan University*

Follow this and additional works at: <https://scholarworks.wmich.edu/pure>



Part of the Geology Commons

---

#### **WMU ScholarWorks Citation**

MGRRE, "MGRRE\_PureOilScoutTickets\_Dahlke\_1\_21017027490000" (2021). *Legacy Scout Tickets from Pure Oil Company*. 678.

<https://scholarworks.wmich.edu/pure/678>

This Document is brought to you for free and open access via ScholarWorks at WMU. It has been accepted for inclusion in Legacy Scout Tickets from Pure Oil Company by an authorized administrator of ScholarWorks at WMU. See the National Digital Catalogue - Science Base Catalogue for more collections submitted by MGRRE.



---

**MGRRE\_PureOilScoutTickets\_Dahlke\_1\_21017027490000**

API 21017027490000

Permit Number 2749

Lease Name Dahlke

Well Number 1

County Bay

Township 17N

Range 04E

Section 27

2021 DEQ or Pure co\_name McClanahan Oil Company

Pure Number 20

Latitude 43.84023

Longitude -83.98272

THE PURE OIL COMPANY

LOCATION REPORT

No. 20

DATE 9-12-55

STATE Michigan COUNTY Bay DIST. Pincanning TWP. Pincanning SEC. 27 TOWN 17 N RANGE 4 E

WELL No. 1 (SERIAL No. 20) FARM Paul Dahlke ACRES

NAME OF STREAM OR WATERS QUADRANGLE SE-SW-SW

OPERATOR McClanahan Oil Company Map Pincanning Twp. - Bay County

Feet from North Line of Farm

330 330 " " East " " "

330 330 " " South " " "

" " West " " "

Feet from North Line of Section

" " East " " "

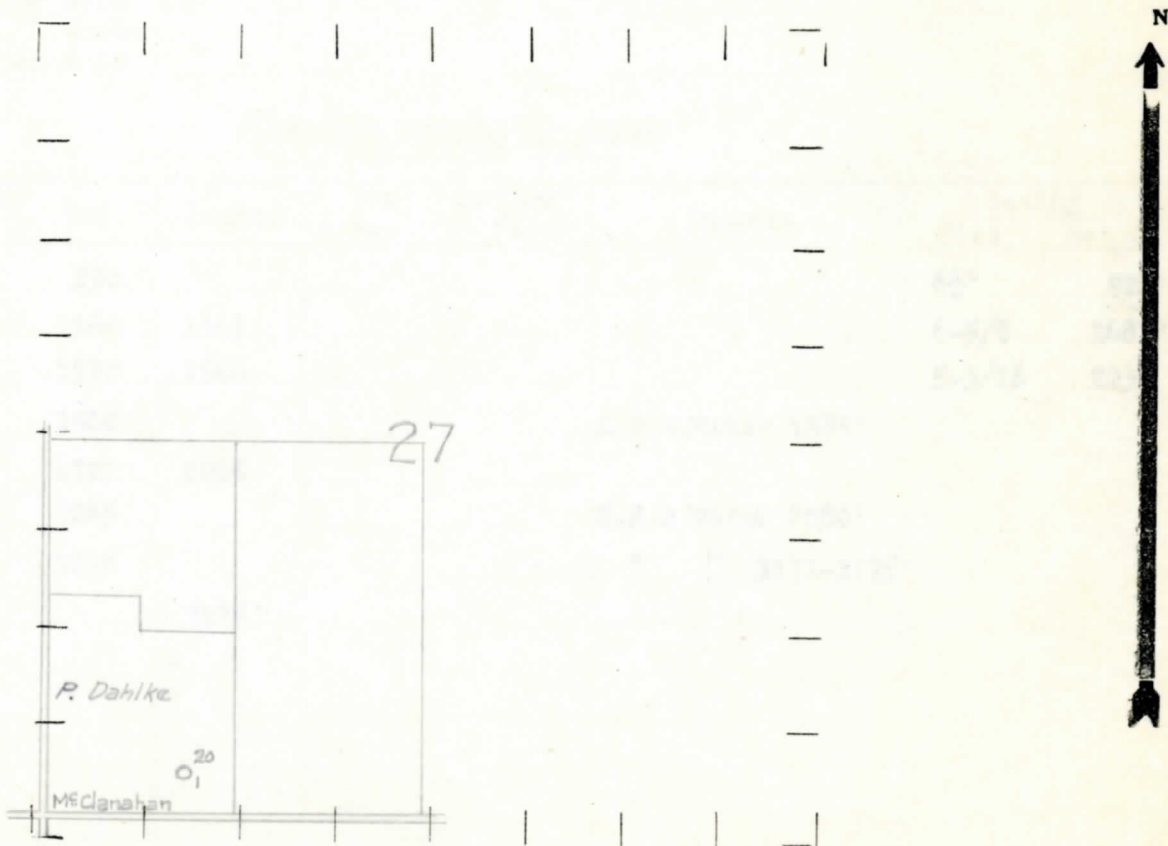
330 330 " " South " " "

790 990 " " West " " "

LEGEND

- LOCATION, RIG, DRILLING, GAS WELL, OIL WELL, SMALL OIL WELL, DRY HOLE, DRY SHOWING OIL, DRY SHOWING GAS, ABANDONED LOCATION, ABANDONED GAS WELL, ABANDONED OIL WELL

NOTE: Below make tracing from map. (when no map is obtainable make sketch) showing farm, center of section, this location with measurements and also wells, dry holes, or other locations in the vicinity of this location.



REMARKS:

SIGNED R.L. Yeager Superintendent or Foreman.

COMPLETION RECORD OF WELLS DRILLED BY OTHER OPERATORS

Michigan Producing Division

Date October 24, 1935 No. 20  
 State Michigan County Bay Dist. Pinconning  
 (Serial No.) Twp: Pinconning Sec: 27 Twp: 17N Rge. 4E  
 Well No. 1 (County No.) 20 Farm Paul Dahlke Acres \_\_\_\_\_  
 Operator McClanshan Oil Company Information secured ~~from~~ Scouting Dept. by \_\_\_\_\_  
 Date well started 9/17/35 Date well completed 10/19/35 Elevation 602'

PRODUCTION RECORD

1st 24 hours natural Dry Hole  
 2nd 24 hours natural \_\_\_\_\_  
 Date of shot \_\_\_\_\_ No. of quarts \_\_\_\_\_ From \_\_\_\_\_ to \_\_\_\_\_ From \_\_\_\_\_ to \_\_\_\_\_  
 Date of acid \_\_\_\_\_ No. of gallons \_\_\_\_\_  
 1st 24 hours after acid shot \_\_\_\_\_  
 2nd 24 hours after acid shot \_\_\_\_\_

FORMATION AND CASING RECORD

Formation	Top	Bottom	Top Pay	Bottom Pay	Remarks	Casing	
						Size	Set at
Marshall	290					8 1/4"	520'
Red Rock	1360	1365				6-5/8	1683'
Sunbury	1520	1560				5-3/16	2230
Berea	1560				H.F.S. Water 1585'		
Antrim	1727	2065					
Traverse	2065				H.F.S. Water 2080'		
Dundee	2878				" " 3171-3175'		
Total Depth		3175'					

Remarks Show Gas 2080'

Signed J.H. Beel