



Western Michigan University
ScholarWorks at WMU

Legacy Scout Tickets from Pure Oil Company

8-20-2021

MGRRE_PureOilScoutTickets_Sobieray, Ben & Mary_1_21017036900000

MGRRE

Western Michigan University

Follow this and additional works at: <https://scholarworks.wmich.edu/pure>



Part of the Geology Commons

WMU ScholarWorks Citation

MGRRE, "MGRRE_PureOilScoutTickets_Sobieray, Ben & Mary_1_21017036900000" (2021). *Legacy Scout Tickets from Pure Oil Company*. 682.

<https://scholarworks.wmich.edu/pure/682>

This Document is brought to you for free and open access via ScholarWorks at WMU. It has been accepted for inclusion in Legacy Scout Tickets from Pure Oil Company by an authorized administrator of ScholarWorks at WMU. See the National Digital Catalogue - Science Base Catalogue for more collections submitted by MGRRE.



MGRRE_PureOilScoutTickets_Sobieray, Ben & Mary_1_21017036900000

API 21017036900000

Permit Number 3690

Lease Name Sobieray, Ben & Mary

Well Number 1

County Bay

Township 17N

Range 04E

Section 12

2021 DEQ or Pure co_name Hogan, Incorporated and Wright, A T

Pure Number 24

Latitude 43.89349

Longitude -83.93524

THE PURE OIL COMPANY

DATE November 27, 1936

LOCATION REPORT

No. 24

STATE Michigan COUNTY Bay DIST. Pinconning SEC. 12 TOWN 17 N RANGE 4 E
 WELL No. 1 (SERIAL No. 24) FARM Ben. Sobieray PREC. Ben. Sobieray ACRES

NAME OF STREAM OR WATERS _____ QUADRANGLE SW-NW-NE

OPERATOR Hogan, Inc. & A. T. Wright Map Pinconning Township, Bay County

Hogan Inc. & A.T. Wright

Pinconning - Bay.

Feet from North Line of Farm

_____ " " East " " "

330 330 " " South " " "

330 330 " " West " " "

990 990 Feet from North Line of Section

_____ " " East " " "

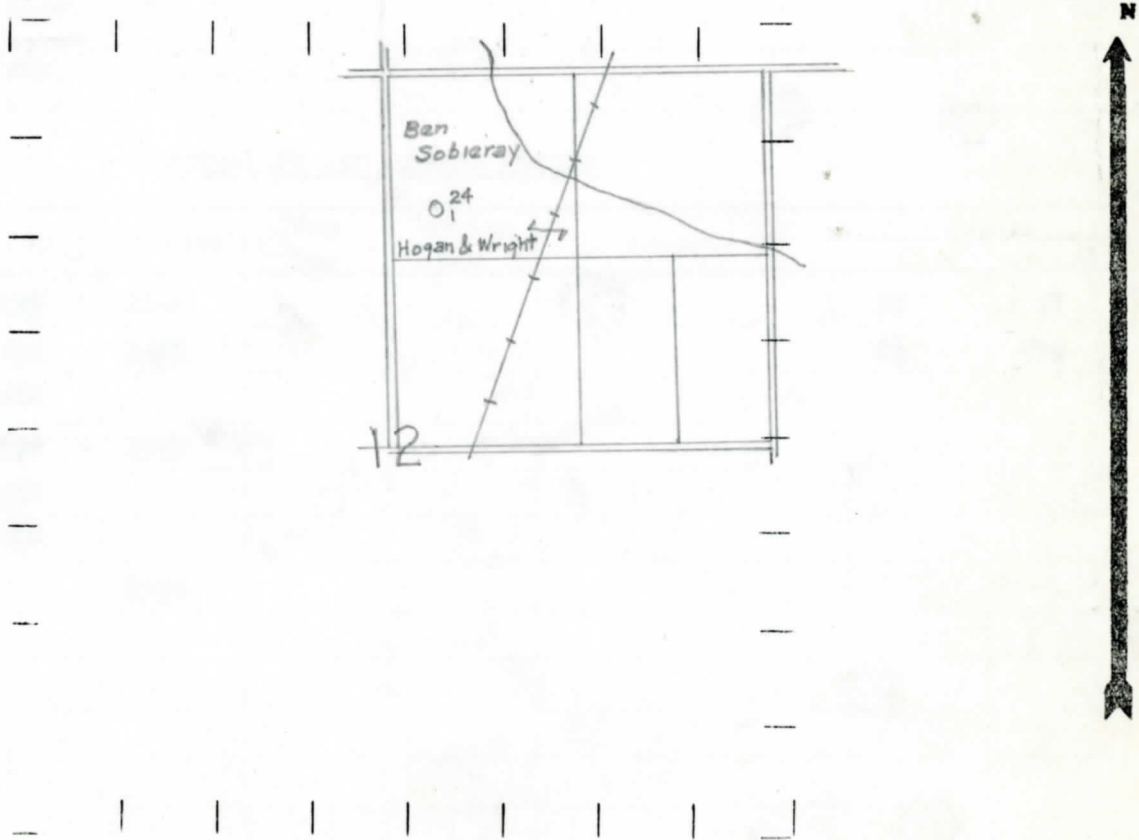
_____ " " South " " "

830 330 " " West 1/4 "

LEGEND

- LOCATION
- ⊙ RIG
- ⊕ DRILLING
- ☀ GAS WELL
- OIL WELL
- ⬮ SMALL OIL WELL
- ⊖ DRY HOLE
- ⬮ DRY SHOWING OIL
- ⊖ DRY SHOWING GAS
- ⊖ ABANDONED LOCATION
- ☀ ABANDONED GAS WELL
- ⬮ ABANDONED OIL WELL

NOTE: Below make tracing from map, (when no map is obtainable make sketch) showing farm, center of section, this location with measurements and also wells, dry holes, or other locations in the vicinity of this location.



REMARKS:

SIGNED

R. L. Yeager
 Superintendent or Foreman

COMPLETION RECORD OF WELLS DRILLED BY

Michigan Producing Division

Date 1-21-37 No. 24
 State Michigan County Bay Dist. Pinconning Twp. 17 N Rge. 4 E
 Well No. 1 (Serial No.) 24 Farm Sobieray Acres _____
 Operator Hogan, Inc., and A. T. Wright Information secured ~~from~~ Scouting Department by _____
 Date well started 11-27-36 Date well completed 1-17-37 Elevation 590.2

PRODUCTION RECORD

1st 24 hours natural Dry hole
 2nd 24 hours natural _____
 Date of shot _____ No. of quarts _____ From _____ to _____ From _____ to _____
 Date of acid _____ No. of gallons _____
 1st 24 hours after acid shot
 2nd 24 hours after acid shot

FORMATION AND CASING RECORD

Formation	Top	Bottom	Top Pay	Bottom Pay	Remarks	Casing	
						Size	Set At
Red Rock	1235	1242				10	47
Sunbury	1432	1462				8 1/2	570
Berea	1462						
Antrim	1622	1952					
Traverse	1952						
Dundee	2760						
Total Depth		2936					

Remarks Show gas 1505-1507. Salt water 2913-2925 filled up 300'.

Signed J. H. Bell