



Western Michigan University
ScholarWorks at WMU

Legacy Scout Tickets from Pure Oil Company

8-20-2021

MGRRE_PureOilScoutTickets_Booth Fisheries Corp._1_21017042760000

MGRRE

Western Michigan University

Follow this and additional works at: <https://scholarworks.wmich.edu/pure>



Part of the Geology Commons

WMU ScholarWorks Citation

MGRRE, "MGRRE_PureOilScoutTickets_Booth Fisheries Corp._1_21017042760000" (2021). *Legacy Scout Tickets from Pure Oil Company*. 683.

<https://scholarworks.wmich.edu/pure/683>

This Document is brought to you for free and open access via ScholarWorks at WMU. It has been accepted for inclusion in Legacy Scout Tickets from Pure Oil Company by an authorized administrator of ScholarWorks at WMU. See the National Digital Catalogue - Science Base Catalogue for more collections submitted by MGRRE.



MGRRE_PureOilScoutTickets_Booth Fisheries Corp._1_21017042760000

API 21017042760000

Permit Number 4276

Lease Name Booth Fisheries Corp.

Well Number 1

County Bay

Township 14N

Range 06E

Section 13

2021 DEQ or Pure co_name Wright, R. A. T. and Keeler, M. Bliss

Pure Number 25

Latitude 43.60884

Longitude -83.7147

THE PURE OIL COMPANY

COMPLETION REPORT OF WELLS DRILLED BY OTHER OPERATORS

DATE July 1, 1937

LOCATION REPORT

No. 25

STATE Michigan

COUNTY Bay

DIST. Hampton

TWP. Hampton

SEC. 13

TOWN 14 N

RANGE 6 E

WELL No. 1/ (SERIAL No. 25) FARM

Booth Fisheries, Inc.

ACRES

NAME OF STREAM OR WATERS

QUADRANGLE SE NW SW

OPERATOR A. T. Wright & M. Bliss Keeler

Map Hampton Township, Bay County

660 660 Feet from North Line of Farm

660 660 " " East " " "

660 660 " " South " " "

660 660 " " West " " "

Feet from North Line of Section

" " East " " "

1650 1650 " " South " " "

1100 1100 " " West " " "

LEGEND

○ LOCATION

⊕ RIG

⊕ DRILLING

☀ GAS WELL

● OIL WELL

⬮ SMALL OIL WELL

⊖ DRY HOLE

⬮ DRY SHOWING OIL

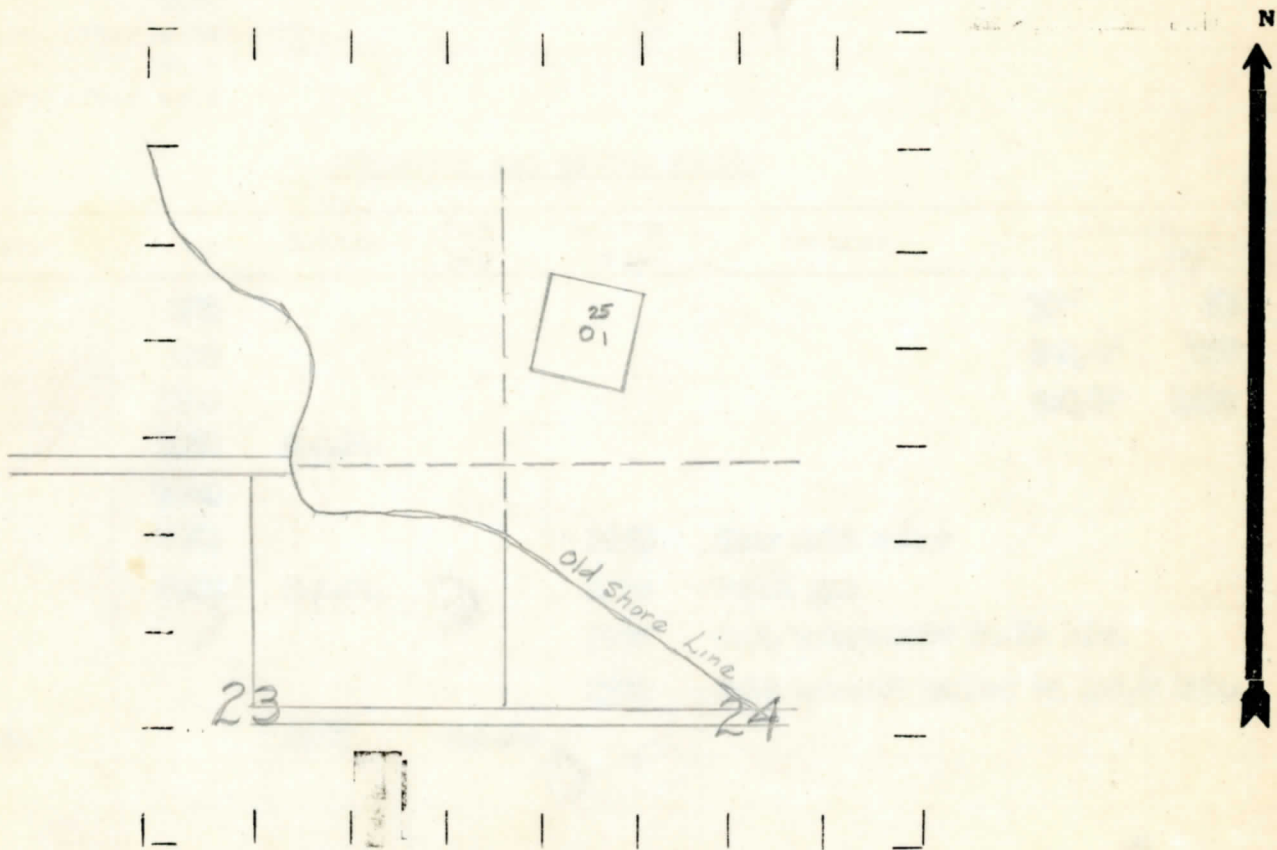
⊖ DRY SHOWING GAS

⊖ ABANDONED LOCATION

☀ ABANDONED GAS WELL

⬮ ABANDONED OIL WELL

NOTE: Below make tracing from map, (when no map is obtainable make sketch) showing farm, center of section, this location with measurements and also wells, dry holes, or other locations in the vicinity of this location.



REMARKS:

SIGNED

R. L. Yeager
Superintendent or Foreman.

Michigan Producing Division

Date September 2, 1937 No. 25
 State Michigan County Bay Dist. Hampton
 (Serial No.) Twp. 13 Sec. 13 Twp. 14 N Rge. 6 E
 Well No. 1 (County No.) 25 Farm Booth Fisheries Corporation Acres _____
 Operator A. T. Wright & M. Bliss Koeler Information secured by Scouting Department
 Date well started 7-1-37 Date well completed 6-27-37 Elevation 582.0

PRODUCTION RECORD

1st 24 hours natural Dry Hole
 2nd 24 hours natural _____
 Date of shot _____ No. of quarts _____ From _____ to _____ From _____ to _____
 Date of acid _____ No. of gallons _____
 1st 24 hours after acid shot _____
 2nd 24 hours after acid shot _____

FORMATION AND CASING RECORD

Formation	Top	Bottom	Top Pay	Bottom Pay	Remarks	Casing	
						Size	Set
Marshall	305					10"	98
Red Rock	413					8-1/4"	468
Sunbury	1513					6-5/8"	1692
Berea	1560	S.L.M.					
Artrin	1660						
Traverse	2022			2040	Show salt water		
Dundee	2705	S.L.M.		2780	Smell gas		
				2920	Salt water-350' in 36 hrs.		
				2925	Salt water-1 bailer in 1-1/2 hrs.		
Total Depth		2925	S.L.M.				

Remarks Hole full water at 160' - water at 665'-1/2 bailer per hr.

Signed D. C. Snodgrass