



Western Michigan University  
ScholarWorks at WMU

---

Legacy Scout Tickets from Pure Oil Company

---

8-20-2021

## MGRRE\_PureOilScoutTickets\_Century Oil and Gas Company\_1\_21017045100000

MGRRE

*Western Michigan University*

Follow this and additional works at: <https://scholarworks.wmich.edu/pure>



Part of the Geology Commons

---

### WMU ScholarWorks Citation

MGRRE, "MGRRE\_PureOilScoutTickets\_Century Oil and Gas Company\_1\_21017045100000" (2021).

*Legacy Scout Tickets from Pure Oil Company*. 686.

<https://scholarworks.wmich.edu/pure/686>

This Document is brought to you for free and open access via ScholarWorks at WMU. It has been accepted for inclusion in Legacy Scout Tickets from Pure Oil Company by an authorized administrator of ScholarWorks at WMU. See the National Digital Catalogue - Science Base Catalogue for more collections submitted by MGRRE.



---

**MGRRE\_PureOilScoutTickets\_Century Oil and Gas Company\_1\_21017045100000**

API 21017045100000

Permit Number 4510

Lease Name Century Oil and Gas Company

Well Number 1

County Bay

Township 17N

Range 03E

Section 9

2021 DEQ or Pure co\_name Stork Oil Company

Pure Number 28

Latitude 43.88601

Longitude -84.10593

THE PURE OIL COMPANY

DATE Sept. 23, 1937

LOCATION REPORT

No. 28

STATE Michigan COUNTY Bay DIST. Mt. Forest TWP. Mt. Forest SEC. 9 TOWN 17 N RANGE 3 E

WELL No. 1 (SERIAL No. 28) FARM Century Oil & Gas Co. ACRES

NAME OF STREAM OR WATERS \_\_\_\_\_ QUADRANGLE NE-SE-SE

OPERATOR Stork Oil Company Map Mt. Forest Twp., Bay County

Stork Oil Co. Feet from North Line of Farm Mt Forest - Bay.

\_\_\_\_\_ " " East " " "

990 990 " " South " " "

990 990 " " West " " "

\_\_\_\_\_ Feet from North Line of Section

320 330 " " East " " "

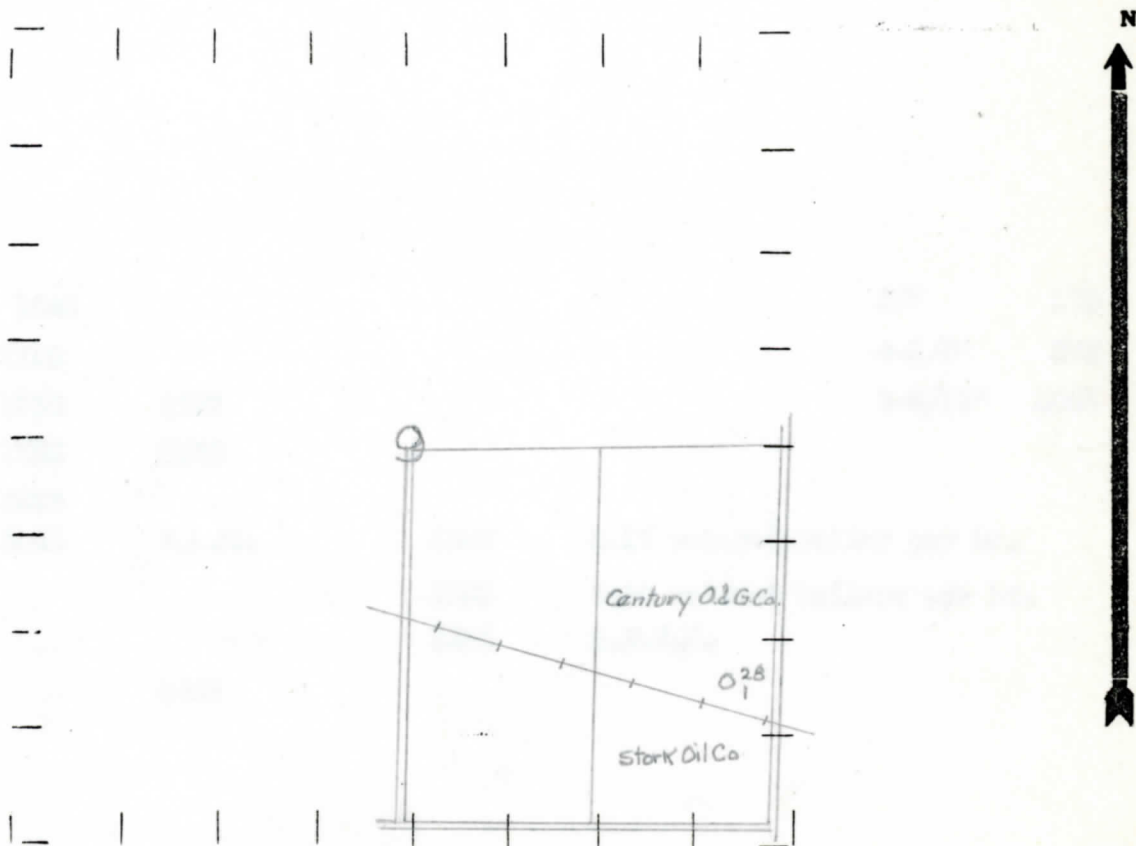
990 990 " " South " " "

\_\_\_\_\_ " " West " " "

LEGEND

- LOCATION
- ⊕ RIG
- ⊕ DRILLING
- ☀ GAS WELL
- OIL WELL
- SMALL OIL WELL
- ⊙ DRY HOLE
- DRY SHOWING OIL
- ⊙ DRY SHOWING GAS
- ⊙ ABANDONED LOCATION
- ☀ ABANDONED GAS WELL
- ABANDONED OIL WELL

NOTE: Below make tracing from map, (when no map is obtainable make sketch) showing farm, center of section, this location with measurements and also wells, dry holes, or other locations in the vicinity of this location.



REMARKS: \_\_\_\_\_

SIGNED R. L. Yogan  
Superintendent or Foreman.

Michigan Producing

January 20, 1938

28

Michigan Bay Mt. Forest 9 17 N 3 E  
 1 28 Century Oil & Gas Company

Stork Oil Company 10-15-37  
 Scouting Department 1-16-38 683.4

Dry Hole

Red Rock	1640			10"	175
Sunbury	1720			8-1/4"	575
Berea	1738	1752		5-3/16"	3047
Antrim	1752	2255			
Traverse	2255				
Dundee	3035	S.L.M.	3220	Salt water-1/2	bailer per hr.
			3243	Salt water-5	bailers per hr.
			3283	H.F.S.W.	
Total Depth		3283			