



Western Michigan University
ScholarWorks at WMU

Legacy Scout Tickets from Pure Oil Company

8-20-2021

MGRRE_PureOilScoutTickets_Goodman_1_21017047700000

MGRRE

Western Michigan University

Follow this and additional works at: <https://scholarworks.wmich.edu/pure>



Part of the Geology Commons

WMU ScholarWorks Citation

MGRRE, "MGRRE_PureOilScoutTickets_Goodman_1_21017047700000" (2021). *Legacy Scout Tickets from Pure Oil Company*. 691.

<https://scholarworks.wmich.edu/pure/691>

This Document is brought to you for free and open access via ScholarWorks at WMU. It has been accepted for inclusion in Legacy Scout Tickets from Pure Oil Company by an authorized administrator of ScholarWorks at WMU. See the National Digital Catalogue - Science Base Catalogue for more collections submitted by MGRRE.



MGRRE_PureOilScoutTickets_Goodman_1_21017047700000

API 21017047700000

Permit Number 4770

Lease Name Goodman

Well Number 1

County Bay

Township 18N

Range 03E

Section 28

2021 DEQ or Pure co_name Teater, C, W.

Pure Number 33

Latitude 43.9272

Longitude -84.12096

COMPLETION RECORD THE PURE OIL COMPANY OTHER OPERATORS

DATE January 20, 1938

LOCATION REPORT

No. 33

STATE Michigan COUNTY Bay DIST. Gibson TWP. Gibson SEC. 28 TOWN 18 N RANGE 3 E

WELL No. 1 (SERIAL No. 33) FARM Leonard E. Goodman ACRES _____

PREC. Leonard E. Goodman

NAME OF STREAM OR WATERS _____ QUADRANGLE SE SW SW

OPERATOR C. W. Teater Map Gibson Township, Bay County

C.W. Teater

Feet from North Line of Farm

330 350 " " East " " "

330 330 " " South " " "

" " West " " "

Feet from North Line of Section

" " East " " "

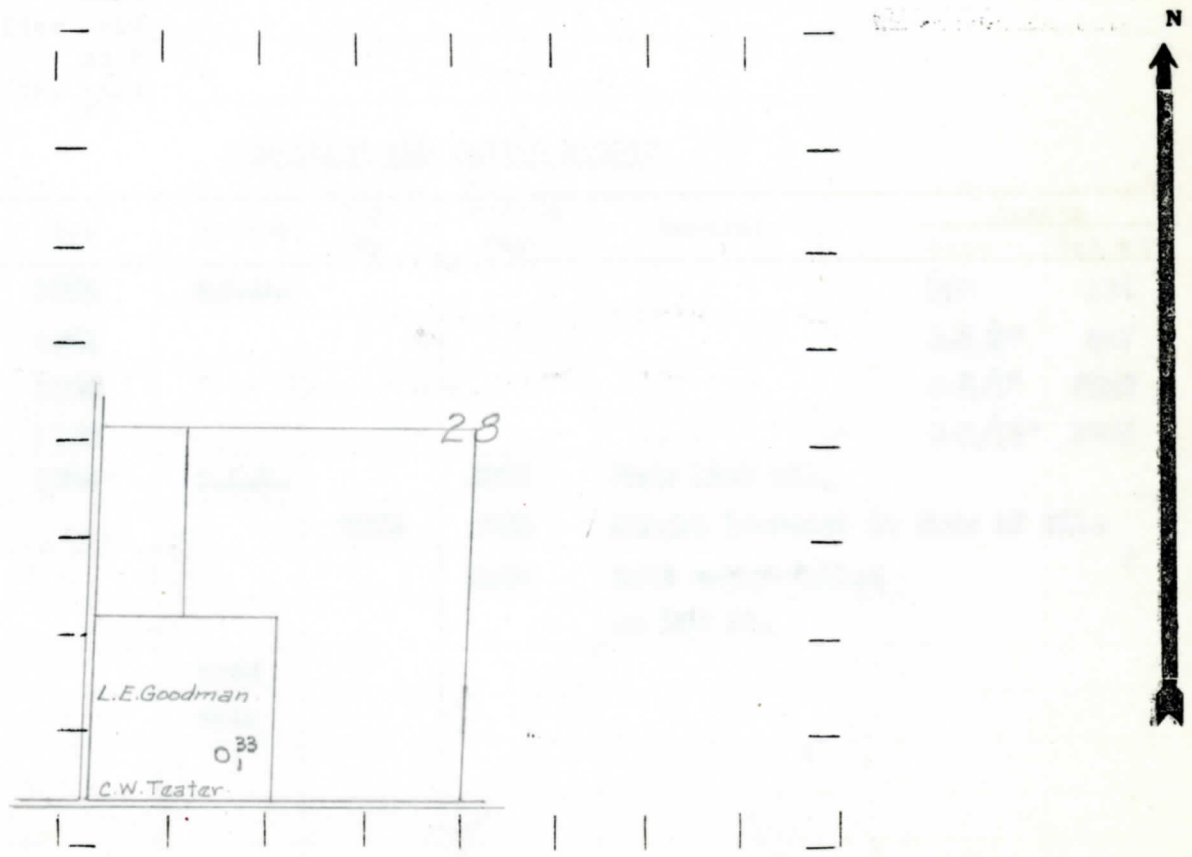
330 330 " " South " " "

990 990 " " West " " "

h/ 12 - Sp 1-15-38

- LEGEND**
- LOCATION
 - ⊕ RIG
 - ⊕ DRILLING
 - ☀ GAS WELL
 - OIL WELL
 - ◆ SMALL OIL WELL
 - ⊙ DRY HOLE
 - ◆ DRY SHOWING OIL
 - ⊙ DRY SHOWING GAS
 - ⊙ ABANDONED LOCATION
 - ☀ ABANDONED GAS WELL
 - ABANDONED OIL WELL

NOTE: Below make tracing from map, (when no map is obtainable make sketch) showing farm, center of section, this location with measurements and also wells, dry holes, or other locations in the vicinity of this location.



REMARKS: _____

SIGNED

R. L. Meyer

Superintendent or Foreman.

Date **April 7, 1938** No. **33**
 State **Michigan** County **Bay** DIST. **Gibson** Sec. **28** Twp. **18 N** Rge. **3 E**
 Well No. **1** (Serial No.) **33** Farm **Leonard E. Goodman** Acres
 Operator **C. W. Teater** Information secured **By Scouting Department**
 Date well started **1-15-38** Date well completed **3-16-38** Elevation **706.1**

PRODUCTION RECORD

1st 24 hours natural **Dry Hole**
 2nd 24 hours natural
 Date of shot No. of quarts From to From to
 Date of acid No. of gallons
 1st 24 hours after acid shot
 2nd 24 hours after acid shot

FORMATION AND CASING RECORD

Formation	Top	Bottom	Top Pay	Bottom Pay	Remarks	Casing	
						Size	Set at
Sunbury	1624	S.L.M.				10"	154
Berea	1661					8-1/4"	887
Antrim	1800					6-5/8"	2228
Traverse	2180					5-3/16"	2965
Dundee	2959	S.L.M.	3075	3075	Show live oil.		
			3075	3083	Slight increase in show of oil.		
				3154	Salt water-filled up 300 ft.		
Total Depth		3154					
Plugged Back;		3122					

Remarks **Water at 1710', 1 1/2 bailers per hr. - show oil and water 2191'-2194'-flowing salt water at 2590'-gas at 2594'.**

Signed **D. C. Shackelford**