



Western Michigan University
ScholarWorks at WMU

Legacy Scout Tickets from Pure Oil Company

8-20-2021

MGRRE_PureOilScoutTickets_Schultz, Walter_1_21017086370000

MGRRE

Western Michigan University

Follow this and additional works at: <https://scholarworks.wmich.edu/pure>



Part of the Geology Commons

WMU ScholarWorks Citation

MGRRE, "MGRRE_PureOilScoutTickets_Schultz, Walter_1_21017086370000" (2021). *Legacy Scout Tickets from Pure Oil Company*. 716.

<https://scholarworks.wmich.edu/pure/716>

This Document is brought to you for free and open access via ScholarWorks at WMU. It has been accepted for inclusion in Legacy Scout Tickets from Pure Oil Company by an authorized administrator of ScholarWorks at WMU. See the National Digital Catalogue - Science Base Catalogue for more collections submitted by MGRRE.



MGRRE_PureOilScoutTickets_Schultz, Walter_1_21017086370000

API 21017086370000

Permit Number 8637

Lease Name Schultz, Walter

Well Number 1

County Bay

Township 14N

Range 04E

Section 2

2021 DEQ or Pure co_name Muskegon Development Company

Pure Number 58

Latitude 43.6513473

Longitude -83.9703214

DATE May 28, 1941

LOCATION REPORT

No. 58

COMPLETION RECORD OF WELLS DRILLED BY OTHER OPERATORS

STATE Michigan COUNTY Bay TWP. Monitor SEC. 2 TOWN 14 N RANGE 4 E

WELL No. 1 (SERIAL No. 58) FARM Walter Schultz ACRES

NAME OF STREAM OR WATERS _____ QUADRANGLE SW NW NW

OPERATOR Chapman Oil Company Map Monitor Township, Bay County

_____ Feet from North Line of Farm

_____ " " East " " "

330 330 " " South " " "

300 300 " " West " " "

720 720 Feet from North Line of Section 1/4

_____ " " East " " "

_____ " " South " " "

40 40 " " West " " "

Low

monitor Bay

LEGEND

○ LOCATION

⊕ RIG

⊕ DRILLING

☀ GAS WELL

● OIL WELL

● SMALL OIL WELL

⊙ DRY HOLE

● DRY SHOWING OIL

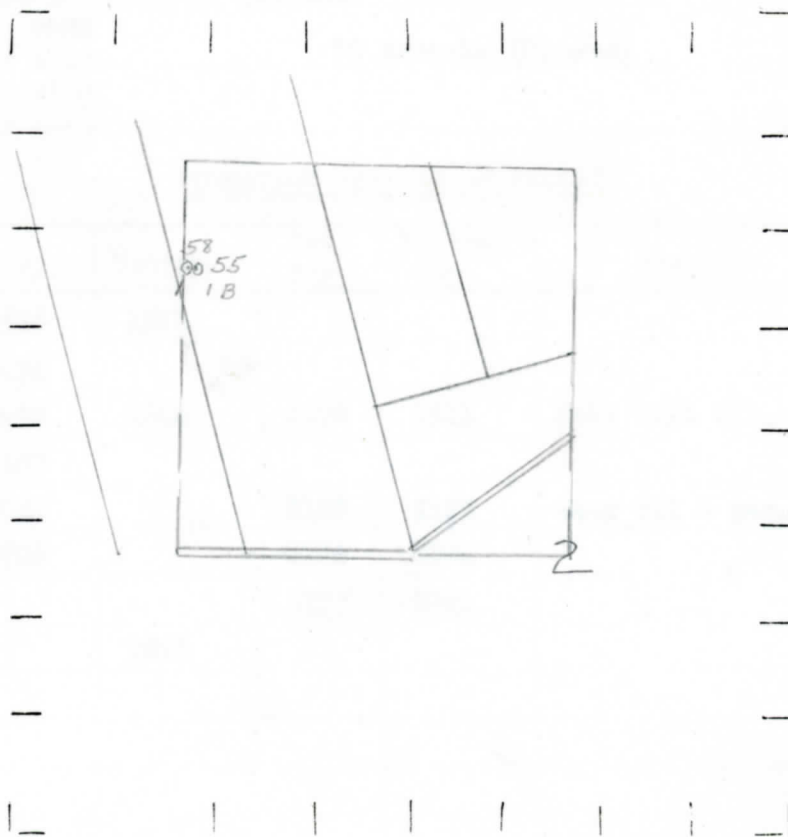
⊙ DRY SHOWING GAS

⊙ ABANDONED LOCATION

☀ ABANDONED GAS WELL

● ABANDONED OIL WELL

NOTE: Below make tracing from map. (when no map is obtainable make sketch) showing farm, center of section, this location with measurements and also wells, dry holes, or other locations in the vicinity of this location.



REMARKS:

SIGNED

W

Superintendent or Foreman.

300

330

0 DEPTH
0 WIE
0 LOCATION

0 BY SHOWING OIL
0 BY HOPE

THE PURE OIL COMPANY

DATE May 28, 1941

LOCATION REPORT

RECORD No. 58

FEET FROM TOP OF LINE OF LITH

STATE Michigan COUNTY Bay TWP. Monitor SEC. 2 TOWN RANGE 4 E
OBSERVATOR CHAPMAN OIL COMPANY MONITOR TOWNSHIP BAY COUNTY ACRES
NAME OF SURVEYOR OR MEASURER

Date August 27, 1941 No. 58

State Mich. County Bay Dist. Twp. Monitor Sec. 2 Twp. 14 N Rge. 4 E

(Serial No.)
Well No. 1 (County No.) 58 Farm Walter Schultz Acres

Operator Chapman Oil Company Information secured By Scouting Department

Date well started 7-25-41 Date well completed 8-15-41 Elevation 595.0

PRODUCTION RECORD

1st 24 hours natural Filled up 2000 ft.

2nd 24 hours natural

Date of shot No. of quarts From to From to

Date of acid 8-22-41 No. of gallons 2000

1st 24 hours after acid shot 70 Barrels (Flowed)

2nd 24 hours after acid

FORMATION AND CASING RECORD

Formation	Top	Bottom	Top Pay	Bottom Pay	Remarks	Casing	
						Size	Set at
Coldw. Red Rock	1356	1361				10"	91
Sunbury	1476					8-1/4"	753
Berea	1498	1644	1498	1511	Hole full oil.	6-5/8"	1648
Antrim	1687					5-3/16"	2714
Traverse Lime	2022		2120	2125	Show oil & gas.		
Dundee	2706		2774	2784			
			2835	2861			
Total Depth		2896					

Remarks 2714' C.T.M. equals 2716' S.L.M.

Signed D. C. Shackelford