



Western Michigan University  
ScholarWorks at WMU

---

Legacy Scout Tickets from Pure Oil Company

---

8-20-2021

**MGRRE\_PureOilScoutTickets\_Duso, John J &  
Alfred\_1\_21017086480000**

MGRRE  
*Western Michigan University*

Follow this and additional works at: <https://scholarworks.wmich.edu/pure>



Part of the Geology Commons

---

#### **WMU ScholarWorks Citation**

MGRRE, "MGRRE\_PureOilScoutTickets\_Duso, John J & Alfred\_1\_21017086480000" (2021). *Legacy Scout Tickets from Pure Oil Company*. 718.  
<https://scholarworks.wmich.edu/pure/718>

This Document is brought to you for free and open access via ScholarWorks at WMU. It has been accepted for inclusion in Legacy Scout Tickets from Pure Oil Company by an authorized administrator of ScholarWorks at WMU. See the National Digital Catalogue - Science Base Catalogue for more collections submitted by MGRRE.



---

MGRRE\_PureOilScoutTickets\_Duso, John J & Alfred\_1\_21017086480000

API 21017086480000

Permit Number 8648

Lease Name Duso, John J & Alfred

Well Number 1

County Bay

Township 15N

Range 04E

Section 34

2021 DEQ or Pure co\_name Muskegon Development Company

Pure Number 60

Latitude 43.6646576

Longitude -83.9733202

## WELL REPORT - OUTSIDE OPERATIONS

SERIAL NO. 60-90STATE Michigan ~~PS~~ CO. BayOPERATOR James GallaherFARM Duso WELL NO. 1-2TWP. 900000, Kawkawlin S. 34 T. 15N R. 4E

LOC. \_\_\_\_\_

WILDCAT ☐ FIELD ☐ FIELD NAME \_\_\_\_\_

MAP NO. \_\_\_\_\_ CO-ORD. \_\_\_\_\_ ELEV. \_\_\_\_\_

STATUS \_\_\_\_\_

Operator's name corrected from:  
Chapman Oil Co.

NORTH

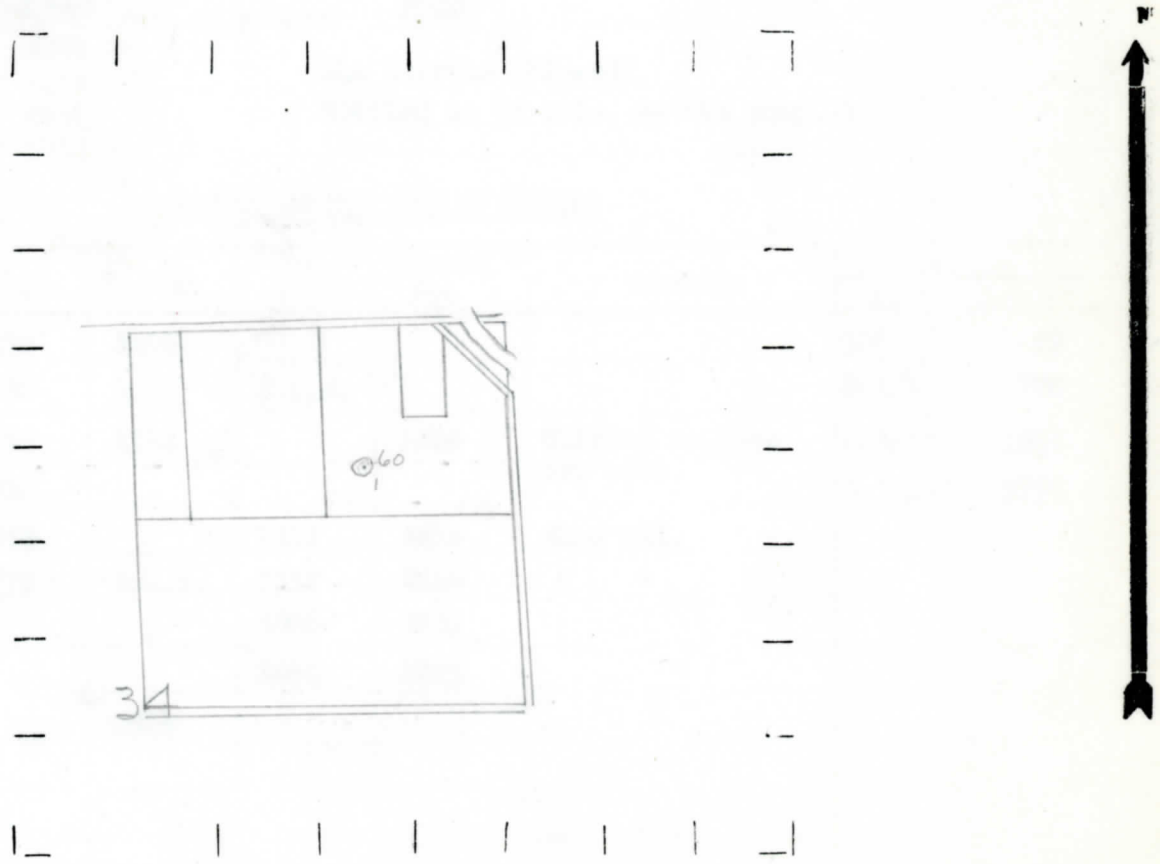

DATE 8-18-53 SCOUT JEC

James C. Campbell  
STATE Michigan COUNTY Bay DIST. Kawkawlin TWP. Kawkawlin SEC. 34 TOWN 15 N RANGE 4 E  
WELL No. 1 (SERIAL No. 60) FARM John J. and Alfred Duso ACRES  
NAME OF STREAM OR WATERS QUADRANGLE SW NE NE  
OPERATOR Chapman Oil Company Map Kawkawlin Township, Bay County  
Chapman Oil Co. Kawkawlin - Bay

		Feet from North Line of Farm
	East	
330	330	South
330	330	West
990	990	1/4 x
990	990	Feet from North Line of Section
	East	
	South	
	West	

- LEGEND
- LOCATION
  - ① RIG
  - ⊕ DRILLING
  - ☀ GAS WELL
  - OIL WELL
  - ◆ SMALL OIL WELL
  - ⊙ DRY HOLE
  - ◆ DRY SHOWING OIL
  - ☀ DRY SHOWING GAS
  - ⊙ ABANDONED LOCATION
  - ☀ ABANDONED GAS WELL
  - ◆ ABANDONED OIL WELL

NOTE: Below make tracing from map. (when no map is obtainable make sketch) showing farm, center of section, this location with measurements and also wells, dry holes, or other locations in the vicinity of this location.



REMARKS:

SIGNED  
Superintendent or Foreman.



Letter from NOMP Line of 1911

IL COMPANY

ОБЪЕКАТОМ СРЕДСТВУ ОТЪ СЪОБЩЕНИЯ

NAME OF SLEEVEN OR MATERS

МЕТТ 100

BLVDKANGGE SM IF IF

Date July 30, 1941

No. 60

State Mich. County Bay Twp. Kawkawlin Sec. 34 Twp. 15 N Rge 4 E

Well No. 1 (Serial No.) 60 Farm John J. & Alfred Duso Acres           

Well No. (County No.)  
Operator Chapman Oil Company Information secured By ~~Scout~~ Scouting Department

Date well started 6-6-41 Date well completed 7-14-41 Elevation 597.8

### PRODUCTION RECORD

1st 24 hours natural 27 Barrels (Pumped)

2nd 24 hours natural

Date of shot \_\_\_\_\_ No. of quarts \_\_\_\_\_ From \_\_\_\_\_ to \_\_\_\_\_ From \_\_\_\_\_ to \_\_\_\_\_

Date of acid 7-23-41 No. of gallons 2000

12 ~~300~~ 244 Barrels (Flowed)  
1st ~~24~~ hours after acid .....  
shot ( Settled to 95 bbls. on the pump. )

2nd 24 hours after acid.....

### FORMATION AND CASING RECORD

[illegible]

Remarks 1546' C.T.M. equals 1553' S.L.M.

Signed D. C. Shackelford