



Western Michigan University  
ScholarWorks at WMU

---

Legacy Scout Tickets from Pure Oil Company

---

8-20-2021

**MGRRE\_PureOilScoutTickets\_Friebe, William\_1\_21017088620000**

MGRRE

*Western Michigan University*

Follow this and additional works at: <https://scholarworks.wmich.edu/pure>



Part of the Geology Commons

---

#### **WMU ScholarWorks Citation**

MGRRE, "MGRRE\_PureOilScoutTickets\_Friebe, William\_1\_21017088620000" (2021). *Legacy Scout Tickets from Pure Oil Company*. 730.

<https://scholarworks.wmich.edu/pure/730>

This Document is brought to you for free and open access via ScholarWorks at WMU. It has been accepted for inclusion in Legacy Scout Tickets from Pure Oil Company by an authorized administrator of ScholarWorks at WMU. See the National Digital Catalogue - Science Base Catalogue for more collections submitted by MGRRE.



---

**MGRRE\_PureOilScoutTickets\_Friebe, William\_1\_21017088620000**

API 21017088620000

Permit Number 8862

Lease Name Friebe, William

Well Number 1

County Bay

Township 15N

Range 04E

Section 34

2021 DEQ or Pure co\_name Muskegon Development Company

Pure Number 72

Latitude 43.6628535

Longitude -83.973331

DATE August 20, 1941

The LOCATION REPORT

No. 72

COMPLETION RECORD OF WELLS DRILLED BY OTHER OPERATORS

STATE Michigan COUNTY Bay DIST. Kawkawlin TWP. Kawkawlin SEC. 34 TOWN 15 N RANGE 4 E  
WELL No. 17 (SERIAL No. 72) FARM William Friebe ACRES

NAME OF STREAM OR WATERS QUADRANGLE NW SE NE

OPERATOR Gulf Refining Company Map Kawkawlin Township, Bay County

330 330 Feet from North Line of Farm Gulf Refining Co.

990 990 " " East " " "

" " South " " "

" " West " " "

Feet from North Line of Section

990 990 " " East " 1/4"

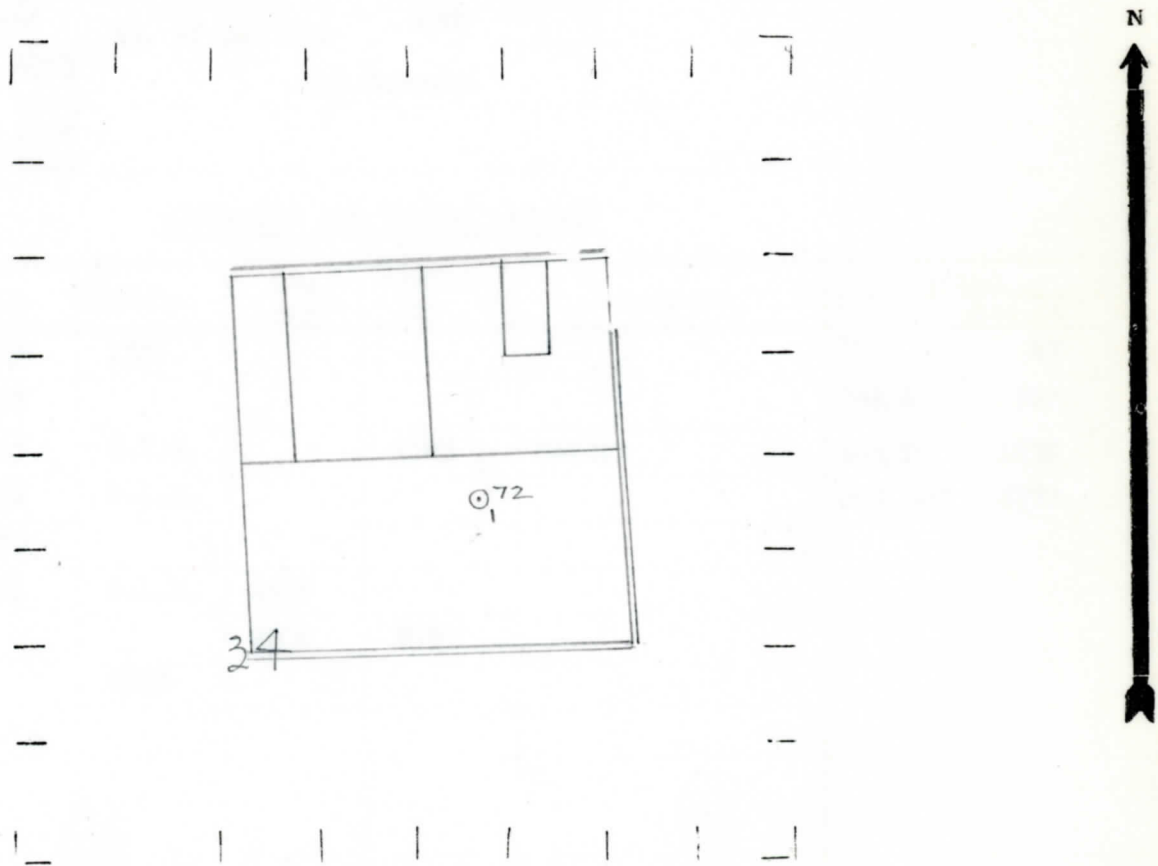
990 990 " " South " " "

" " West " " "

- LOCATION
- ⊕ RIG
- ⊕ DRILLING
- ☼ GAS WELL
- OIL WELL
- ⬮ SMALL OIL WELL

- LEGEND**
- ⊙ DRY HOLE
  - ⬮ DRY SHOWING OIL
  - ☼ DRY SHOWING GAS
  - ⊙ ABANDONED LOCATION
  - ☼ ABANDONED GAS WELL
  - ⬮ ABANDONED OIL WELL

NOTE: Below make tracing from map, (when no map is obtainable make sketch) showing farm, center of section, this location with measurements and also wells, dry holes, or other locations in the vicinity of this location.



REMARKS:

SIGNED

W  
Superintendent or Foreman.

330 THE PURE OIL COMPANY  
 330 THE PURE OIL COMPANY  
 OBSERVATOR STATE OF ALABAMA  
 NAME OF BUREAU OR AGENCY

Date 10-15-41 No. 72  
 State Mich. County Bay ~~Dist.~~ Twp. Kawkawlin Sec. 34 Twp. 15 N Rge. 4 E  
 Well No. 1 (Serial No.) ~~xxxx~~ (County No.) 72 Farm Wm. Friebe Acres \_\_\_\_\_  
 Operator Gulf Refining Company Information secured ~~from~~ <sup>By</sup> Scouting Department  
 Date well started 8-16-41 Date well completed 9-25-41 Elevation 596.5

PRODUCTION RECORD

1st 24 hours natural Filled up 200 ft.  
 2nd 24 hours natural \_\_\_\_\_  
 Date of shot 9-29-41 and 10-5-41 No. of quarts \_\_\_\_\_ From \_\_\_\_\_ to \_\_\_\_\_ From \_\_\_\_\_ to \_\_\_\_\_  
 Date of acid 12 No. of gallons 4000  
 1st ~~24~~ hours after acid shot 123 Barrels  
 2nd 24 hours after acid shot

FORMATION AND CASING RECORD

Formation	Top	Bottom	Top Pay	Bottom Pay	Remarks	Casing	
						Size	Set at
Coldw. Red Rock	1385	1395				10"	83
Sunbury	1477					8-1/4"	768
Berea	1545	C.T.M.		1585	Water.	6-5/8"	1738
Antrim	1732	S.L.M.				5-3/16"	2770
Traverse Lime	2075						
Dundee	2764	S.L.M.	2829				
			2860	2890			
Total Depth		2905					

Remarks 1695' C.T.M. equals 1711 S.L.M.

Signed D. G. Shackelford