



Western Michigan University
ScholarWorks at WMU

Legacy Scout Tickets from Pure Oil Company

8-20-2021

MGRRE_PureOilScoutTickets_Friebe, Wm_2_21017091370000

MGRRE

Western Michigan University

Follow this and additional works at: <https://scholarworks.wmich.edu/pure>



Part of the Geology Commons

WMU ScholarWorks Citation

MGRRE, "MGRRE_PureOilScoutTickets_Friebe, Wm_2_21017091370000" (2021). *Legacy Scout Tickets from Pure Oil Company*. 743.

<https://scholarworks.wmich.edu/pure/743>

This Document is brought to you for free and open access via ScholarWorks at WMU. It has been accepted for inclusion in Legacy Scout Tickets from Pure Oil Company by an authorized administrator of ScholarWorks at WMU. See the National Digital Catalogue - Science Base Catalogue for more collections submitted by MGRRE.



MGRRE_PureOilScoutTickets_Friebe, Wm_2_21017091370000

API 21017091370000

Permit Number 9137

Lease Name Friebe, Wm

Well Number 2

County Bay

Township 15N

Range 04E

Section 34

2021 DEQ or Pure co_name Muskegon Development Company

Pure Number 85

Latitude 43.6628582

Longitude -83.977091

DATE November 5, 1941

LOCATION RECORD OF LOCATION REPORT OTHER OPERATORS

No. 85

STATE Michigan COUNTY Bay TWP. Kawkawlin SEC. 34 TOWN 15 N RANGE 4 E
WELL No. 22 (SERIAL No. 85) FARM Wm. Friebe ACRES

NAME OF STREAM OR WATERS _____ QUADRANGLE C N 1/2 SW NE

OPERATOR Gulf Refining Company Map Kawkawlin Township, Bay County

330 330 Feet from North Line of Farm

_____ " " East " " "

_____ " " South " " "

660 660 " " West " " "

_____ Feet from North Line of Section

_____ " " East " " "

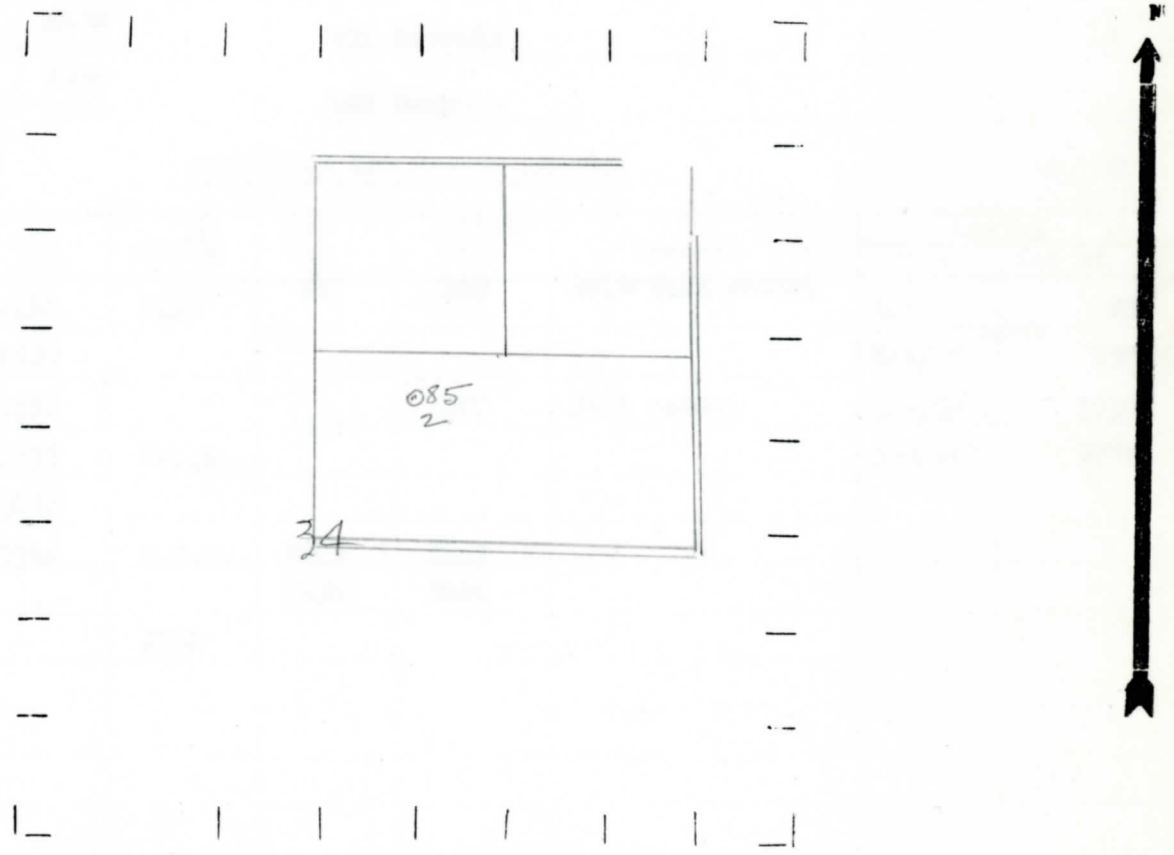
990 990 " " South " " 1/4

660 660 " " West " " "

Low

- LEGEND**
- LOCATION
 - ⊕ RIG
 - ⊕ DRILLING
 - ☀ GAS WELL
 - OIL WELL
 - ⬮ SMALL OIL WELL
 - ⊙ DRY HOLE
 - ⬮ DRY SHOWING OIL
 - ⊙ DRY SHOWING GAS
 - ⊙ ABANDONED LOCATION
 - ☀ ABANDONED GAS WELL
 - ⬮ ABANDONED OIL WELL

NOTE: Below make tracing from map. (when no map is obtainable make sketch) showing farm, center of section, this location with measurements and also wells, dry holes, or other locations in the vicinity of this location.



REMARKS:

SIGNED

Superintendent or Foreman.

9

Michigan Producing Division

Date **January 14, 1942** No. **85**
 State **Mich.** County **Bay** ~~XXXXXX~~ Twp. **Kawkawlin** Sec. **34** Twp. **15 N** Rge. **4 E**
 Well No. **2** (Serial No.) ~~XXXXXX~~ **85** Farm **Wm. Friebe** Acres _____
 Operator **Gulf Refining Company** Information secured ~~XXXX~~ **By Scouting Department**
 Date well started **11-27-41** Date well completed **1-8-42** Elevation **597.9**

PRODUCTION RECORD

1st 24 hours natural **Filled up 2000 ft.**
 2nd 24 hours natural _____
 Date of shot _____ No. of quarts _____ From _____ to _____ From _____ to _____
 Date of acid **1-10-42** No. of gallons **3000**
10 ~~XXXX~~ hours after acid **224 Barrels**
~~XXXX~~
 2nd 24 hours after acid **126 Barrels**

FORMATION AND CASING RECORD

Formation	Top	Bottom	Top Pay	Bottom Pay	Remarks	Casing	
						Size	Set at
Coldw. Red Rock	1410	1420	135	140	Hole full water.	10"	85
Sunbury	1530					8-1/4"	770
Berea	1552			1607	Salt water.	6-5/8"	1739
Antrim	1737	S.L.M.				5-3/16"	2769
Traverse Lime	2075						
Dundee	2766	S.O.M.	2827	2847			
			2854	2916			
Total Depth		2936					

Remarks _____

Signed **D. C. Shackelford**