



Western Michigan University
ScholarWorks at WMU

Legacy Scout Tickets from Pure Oil Company

8-20-2021

MGRRE_PureOilScoutTickets_Duso_2_21017093600000

MGRRE

Western Michigan University

Follow this and additional works at: <https://scholarworks.wmich.edu/pure>



Part of the Geology Commons

WMU ScholarWorks Citation

MGRRE, "MGRRE_PureOilScoutTickets_Duso_2_21017093600000" (2021). *Legacy Scout Tickets from Pure Oil Company*. 748.

<https://scholarworks.wmich.edu/pure/748>

This Document is brought to you for free and open access via ScholarWorks at WMU. It has been accepted for inclusion in Legacy Scout Tickets from Pure Oil Company by an authorized administrator of ScholarWorks at WMU. See the National Digital Catalogue - Science Base Catalogue for more collections submitted by MGRRE.



MGRRE_PureOilScoutTickets_Duso_2_21017093600000

API 21017093600000

Permit Number 9360

Lease Name Duso

Well Number 2

County Bay

Township 15N

Range 04E

Section 34

2021 DEQ or Pure co_name Muskegon Development Company

Pure Number 90

Latitude 43.6664244

Longitude -83.9720676

COMPLETION RECORD THE PURE OIL COMPANY OTHER OPERATORS

Date December 29, 1941

Serial No. 90

LOCATION REPORT

A.F.E. No.

Division Mich. Producing District Lease Duso

Acres Lease No. Elevation Well No. 2

Quadrangle C N 1/2 NE NE Sec. 34 Twp. 15 N Rge. 4 E Twp. Kawkawlin

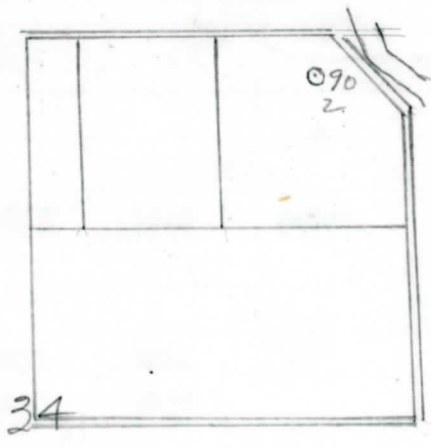
Survey County Bay Bay State Michigan

Operator Chapman Oil Company Map Kawkawlin Township, Bay County

660	660	Feet North of South Line of Lease	"	East	"	West	"	"	"
330	330	"	"	South	"	North	"	"	"
		"	"	West	"	East	"	"	"
		Feet North of South Line of Section	"	East	"	West	"	"	"
330	330	"	"	South	"	North	"	"	"
660	660	"	"	West	"	East	"	"	"

LEGEND

- Location
- ☀ Gas Well
- Oil Well
- ∅ or ○ Dry Hole
- Dry Showing Oil
- ☀ Dry Showing Gas
- ⊗ Abandoned Location
- ☀ or ☀ Abandoned Gas Well
- or ● Abandoned Oil Well



Scale

Remarks:

Submitted by W Civil Engineer

Approved by Division Manager

Approved by Vice-President - General Manager

Date **March 4, 1942** No. **90**
 State **Mich.** County **Bay** Dist. **Kawkawlin** Sec. **34** Twp. **15 N** Rge **4 E**
 Well No. **2** (Serial No.) **90** Farm **Duso** Acres _____
 Operator **Chapman Oil Company** Information secured ~~from~~ **Scouting Department**
 Date well started **12-20-41** Date well completed **2-10-42** Elevation **597.5**

PRODUCTION RECORD

1st 24 hours natural **Filled up 800 ft.**
 2nd 24 hours natural _____
 Date of shot _____ No. of quarts _____ From _____ to _____ From _____ to _____
 Date of acid **2-20-42** No. of gallons **4000**
 1st ~~24~~ ^{8 1/2} hours after acid shot **332 Bbls.**
 2nd 24 hours after acid shot **(Settled to 60 bbls. per day on 3-3-42.)**

FORMATION AND CASING RECORD

Formation	Top	Bottom	Top Pay	Bottom Pay	Remarks	Casing	
						Size	Set at
Coldw. Red Rock	1410	1415				10"	77
Sunbury	1535					8-1/4"	770
Berea	1573		1635	1640	Water.	5-3/16"	2778
Antrim	1748						
Traverse Lime	2084						
Dundee	2766	S.L.M.	2831	2841			
			2873	2907			
Total Depth		2916					

Remarks _____

Signed **D. C. Shackelford**