



Western Michigan University
ScholarWorks at WMU

Legacy Scout Tickets from Pure Oil Company

8-20-2021

MGRRE_PureOilScoutTickets_Kaiser, Wm_1_21017094000000

MGRRE

Western Michigan University

Follow this and additional works at: <https://scholarworks.wmich.edu/pure>



Part of the Geology Commons

WMU ScholarWorks Citation

MGRRE, "MGRRE_PureOilScoutTickets_Kaiser, Wm_1_21017094000000" (2021). *Legacy Scout Tickets from Pure Oil Company*. 749.

<https://scholarworks.wmich.edu/pure/749>

This Document is brought to you for free and open access via ScholarWorks at WMU. It has been accepted for inclusion in Legacy Scout Tickets from Pure Oil Company by an authorized administrator of ScholarWorks at WMU. See the National Digital Catalogue - Science Base Catalogue for more collections submitted by MGRRE.



MGRRE_PureOilScoutTickets_Kaiser, Wm_1_21017094000000

API 21017094000000

Permit Number 9400

Lease Name Kaiser, Wm

Well Number 1

County Bay

Township 14N

Range 04E

Section 1

2021 DEQ or Pure co_name Muskegon Development Company

Pure Number 91

Latitude 43.6430856

Longitude -83.9436381

THE PURE OIL COMPANY

Serial No. 91

LOCATION REPORT

A.F.E. No. _____

Date January 21, 1942

Division Mich. Producing

District _____

Lease _____

Division Wm Kaiser
Lease Wm. Kaiser

Acres _____ Lease No. _____

Elevation _____

Well No. 1'

Quadrangle C 3/4 NE SW 1 Sec. 1

Twp. 14 N

Rge. 4 E

ROCK
EDUC
Twp.

Monitor Monitor

Survey _____ County Bay

State Michigan

Operator Gulf Refining Company

Map Monitor Township, Bay County

1657 1657 Feet North of South Line of Lease

" East " West " " "

" South " North " " "

665 665 " West " East 1/4 "

1657 1657 Feet North of South Line of Section

" East " West " " "

" South " North " " "

665 665 " West " East " " "

Low

LEGEND

○ Location

☀ Gas Well

● Oil Well

○ or ○ Dry Hole

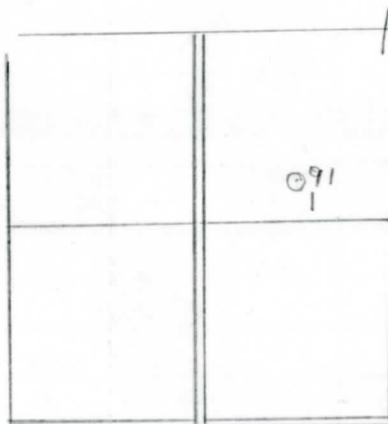
● Dry Showing Oil

☀ Dry Showing Gas

⊖ Abandoned Location

☀ or ☀ Abandoned Gas Well

● or ● Abandoned Oil Well



Scale _____

Remarks: _____

Submitted by W _____
Civil Engineer

Approved by _____
Division Manager

Approved by _____
Vice-President - General Manager

Date **February 25, 1942** No. **91**
 State **Mich.** County **Bay** ~~Sixx.~~ **Monitor** Sec. **1** Twp. **14 N Rge 4 E**
 Well No. **1** (Serial No.) ~~(XXXXXX)~~ **91** Farm **Wm. Kaiser** Acres _____
 Operator **Gulf Refining Company** Information secured ~~XXXX~~ **By Scouting Department**
 Date well started **1-24-42** Date well completed **2-9-42** Elevation **591.0**

PRODUCTION RECORD

1st 24 hours natural **???**
 2nd 24 hours natural _____
 Date of shot _____ No. of quarts _____ From _____ to _____
 Date of acid **2-19-42 and 2-20-42** No. of gallons **4000**
 1st 24 hours after acid ~~XXXX~~ **Est. 150 Barrels**
 2nd 24 hours after acid shot _____

FORMATION AND CASING RECORD

Formation	Top	Bottom	Top Pay	Bottom Pay	Remarks	Casing	
						Size	Set at
Sunbury	1481					10"	91
Berea	1502					6-5/8"	2740
Antrim	?						
Traverse Lime	2029						
Dundee	2721		2783	2804			
			2812	2868 1/2			
Total Depth		2871					

Remarks _____

Signed **D. C. Shackelford**