



Western Michigan University
ScholarWorks at WMU

Legacy Scout Tickets from Pure Oil Company

8-20-2021

**MGRRE_PureOilScoutTickets_Ammann,
Ernest_1_21017094050000**

MGRRE
Western Michigan University

Follow this and additional works at: <https://scholarworks.wmich.edu/pure>



Part of the Geology Commons

WMU ScholarWorks Citation

MGRRE, "MGRRE_PureOilScoutTickets_Ammann, Ernest_1_21017094050000" (2021). *Legacy Scout Tickets from Pure Oil Company*. 750.
<https://scholarworks.wmich.edu/pure/750>

This Document is brought to you for free and open access via ScholarWorks at WMU. It has been accepted for inclusion in Legacy Scout Tickets from Pure Oil Company by an authorized administrator of ScholarWorks at WMU. See the National Digital Catalogue - Science Base Catalogue for more collections submitted by MGRRE.



MGRRE_PureOilScoutTickets_Ammann, Ernest_1_21017094050000

API 21017094050000

Permit Number 9405

Lease Name Ammann, Ernest

Well Number 1

County Bay

Township 15N

Range 04E

Section 26

2021 DEQ or Pure co_name Muskegon Development Company

Pure Number 92

Latitude 43.66828

Longitude -83.96708

corrected
CORRECTED

**THE PURE OIL COMPANY
LOCATION REPORT**

Serial No. 92 *92*

Date February 4, 1942

A.F.E. No. _____

Division Mich. Producing District _____ Lease Ernest Amann

Acres _____ Lease No. _____ Elevation _____ Well No. 1

Quadrangle C 5 2 SW SW Sec. 26 Twp. 15 N Rge. 4 E ~~BNX~~ ~~BNX~~ ~~BNX~~ Kawkawlin

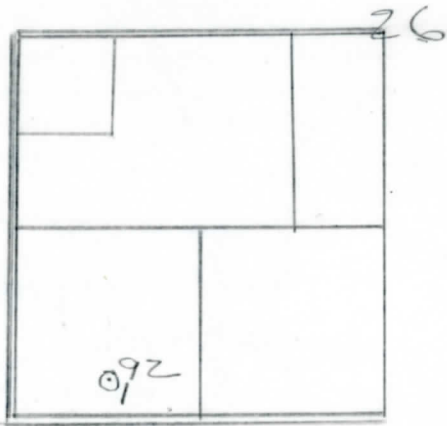
Survey _____ County Bay State Michigan

Operator C. W. Jones, et al Map Kawkawlin Township, Bay County

330	330	Feet North of South Line of Lease
660	660	" East " West " " "
		" South " North " " "
		" West " East " " "
330	330	Feet North of South Line of Section
660	660	" East " West " " "
		" South " North " " "
		" West " East " " "

LEGEND

- Location
- ☀ Gas Well
- Oil Well
- ☉ or ○ Dry Hole
- Dry Showing Oil
- ☀ Dry Showing Gas
- ☉ Abandoned Location
- ☉ or ☀ Abandoned Gas Well
- or ● Abandoned Oil Well



Remarks: Correcting location. Scale _____

Submitted by W Civil Engineer Approved by _____ Division Manager
Approved by _____ Vice-President-General Manager

Survey Bay County Bay State Michigan
 Quadrangle C 34 SW SW Sec. 26 Twp. 15 N Rge. 4 E Kaw Kawlin
 Acres 330 Lease No. 330 Elevation 660 Well No. 1
 Division Michigan District Bay

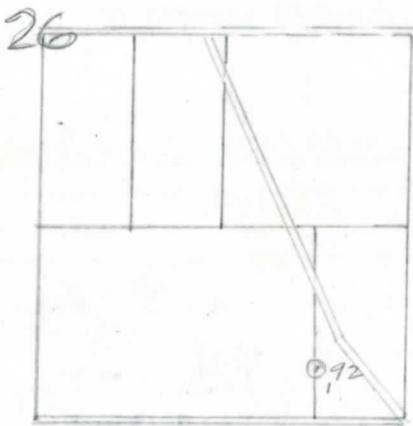
Acres 330 Lease No. 330 Elevation 660 Well No. 1
 Quadrangle C 34 SW SW Sec. 26 Twp. 15 N Rge. 4 E Kaw Kawlin
 Survey Bay County Bay State Michigan
 Operator G. W. Jones, et al Map Kaw Kawlin Township, Bay County

330 330 Feet North of South Line of Lease
 660 660 " East " West " " "
 " South " North " " "
 " West " East " " "
 330 330 Feet North of South Line of Section
 660 660 " East " West " " "
 " South " North " " "
 " West " East " " "

mem

LEGEND

- Location
- ☀ Gas Well
- Oil Well
- or ○ Dry Hole
- or ● Dry Showing Oil
- ☀ Dry Showing Gas
- Abandoned Location
- ☀ or ☀ Abandoned Gas Well
- or ● Abandoned Oil Well



Remarks: _____
 Submitted by W Civil Engineer Approved by _____ Division Manager
 Approved by _____ Vice-President - General Manager

Date April 22, 1942 No. 92

State Mich. County Bay ~~Dist.~~ Twp. Kawkawlin Sec. 26 Twp. 15 N Rce. 4 E

Well No. 1 (Serial No.) 92 (County No.) ~~XXXXXX~~ Farm Ernest Annann Acres

Operator C. W. Jones, et al By Scouting Department Information secured ~~from~~

Date well started 2-19-42 Date well completed 4-3-42 Elevation 596.6

PRODUCTION RECORD