



Western Michigan University
ScholarWorks at WMU

Legacy Scout Tickets from Pure Oil Company

8-20-2021

MGRRE_PureOilScoutTickets_Laracy, Cora A_2_21017094060000

MGRRE

Western Michigan University

Follow this and additional works at: <https://scholarworks.wmich.edu/pure>



Part of the Geology Commons

WMU ScholarWorks Citation

MGRRE, "MGRRE_PureOilScoutTickets_Laracy, Cora A_2_21017094060000" (2021). *Legacy Scout Tickets from Pure Oil Company*. 751.

<https://scholarworks.wmich.edu/pure/751>

This Document is brought to you for free and open access via ScholarWorks at WMU. It has been accepted for inclusion in Legacy Scout Tickets from Pure Oil Company by an authorized administrator of ScholarWorks at WMU. See the National Digital Catalogue - Science Base Catalogue for more collections submitted by MGRRE.



MGRRE_PureOilScoutTickets_Laracy, Cora A_2_21017094060000

API 21017094060000

Permit Number 9406

Lease Name Laracy, Cora A

Well Number 2

County Bay

Township 15N

Range 04E

Section 27

2021 DEQ or Pure co_name Muskegon Development Company

Pure Number 93

Latitude 43.6717639

Longitude -83.9719897

THE PURE OIL COMPANY

Serial No. 93

LOCATION REPORT

A.F.E. No.

Date January 28, 1942

Division Mich. Producing

District _____ Lease _____

Cora A. Laracy
Cora A. Laracy

Acres _____ Lease No. _____ Elevation _____ Well No. 2

Quadrangle C 32 NE SE ~~27~~ 27 Sec. 27 Twp. 15 N Rge. 4 E ~~Blk~~ ~~DGC~~ Kawkawlin Twp. Kawkawlin

Survey _____ County Bay State Michigan

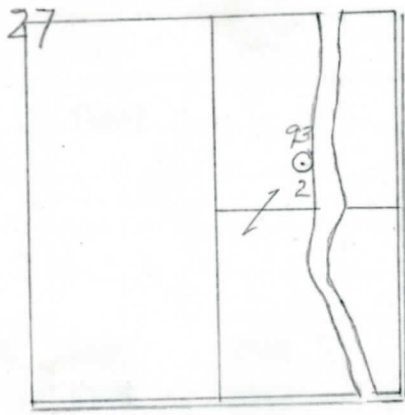
Operator C. W. Jones, et al Map Kawkawlin Township, Bay County

330	330	Feet North of South Line of Lease
660	660	" East " West " " "
		" South " North " " "
		" West " East " " "
		Feet North of South Line of Section
		" East " West " " "
990	990	" South " North <u>1/4</u> "
660	660	" West " East " " "

Loop

LEGEND

- Gas Well
- Oil Well
- Dry Hole
- Dry Showing Oil
- Dry Showing Gas
- Abandoned Location
- Abandoned Gas Well
- Abandoned Oil Well



Scale _____

Remarks: _____

Submitted by _____ Civil Engineer

Approved by _____ Division Manager

Approved by _____ Vice-President - General Manager

THE PURE OIL COMPANY
LOCATION REPORT

Observer: C. W. Jones, et al
 Date: August 19, 1942
 State: Mich. County: Bay Twp.: Kawkawlin Sec.: 27 Twp.: 15 N Rge.: 4 E
 Well No.: 2 (Serial No.) (County Index) 93 Farm: Cora A. Laracy Acres:
 Operator: C. W. Jones, et al Information secured by: Scouting Department
 Date well started: 5-30-42 Date well completed: 7-16-42 Elevation: 596.0

PRODUCTION RECORD

1st 24 hours natural Filled up 1800 ft.
 2nd 24 hours natural
 Date of shot No. of quarts From to From to
 Date of acid 7-26-42 and 8-1-42 No. of gallons 4000
 1st 24 hours after acid shot 60 Barrels (Pumped)
 2nd 24 hours after acid shot

FORMATION AND CASING RECORD

Formation	Top	Bottom	Top Pay	Bottom Pay	Remarks	Casing	
						Size	Set at
Coldw. Red Rock	1435	1440	(Log)			10"	84
Sunbury	1562	(Log)				8-1/4"	754
Berea	1590	"				6-5/8"	1762
Antrim	1772	"				5-3/16"	2810
Traverse Line	2123						
Dundee	2797	S.L.M.	2870	2880			
			2925	2940			
Total Depth		2945					

Remarks 2838' CTM equals 2810' SLM.

Signed D. C. Shackelford