



Western Michigan University
ScholarWorks at WMU

Legacy Scout Tickets from Pure Oil Company

8-20-2021

MGRRE_PureOilScoutTickets_Friebe-Knochel_1_na

MGRRE

Western Michigan University

Follow this and additional works at: <https://scholarworks.wmich.edu/pure>



Part of the Geology Commons

WMU ScholarWorks Citation

MGRRE, "MGRRE_PureOilScoutTickets_Friebe-Knochel_1_na" (2021). *Legacy Scout Tickets from Pure Oil Company*. 766.

<https://scholarworks.wmich.edu/pure/766>

This Document is brought to you for free and open access via ScholarWorks at WMU. It has been accepted for inclusion in Legacy Scout Tickets from Pure Oil Company by an authorized administrator of ScholarWorks at WMU. See the National Digital Catalogue - Science Base Catalogue for more collections submitted by MGRRE.



MGRRE_PureOilScoutTickets_Friebe-Knochel_1_na

API na

Permit Number na

Lease Name Friebe-Knochel

Well Number 1

County Bay

Township 15N

Range 04E

Section 35

2021 DEQ or Pure co_name Gulf Refining Co

Pure Number 108

Latitude 43.6602795

Longitude -83.9600876

THE PURE OIL COMPANY
COMPLETION RECORD FOR WELLS DRILLED BY OTHER OPERATORS

LOCATION REPORT

Michigan

A.F.E. No.

FRIEBE - KNOCHEL
Friebe-Knochel

Date July 1, 1942

Division Mich. Producing

District

Lease

Acres

Lease No.

Elevation

Well No. 1

(Serial No. 108)

Quadrangle C N¹/₂ NW NW

Sec. 35

Twp. 15 N

Rge. 4 E

BRX
DIX
Twp. Kawkawlin

Kawkawlin

Survey

County Bay

State Michigan

Operator Gulf Refining Co.
Gulf Refining Company

Map Kawkawlin Twp., Bay Co.
Kawkawlin Township, Bay County

330 330 Feet from North Line of Lease

" " East " " "

" " South " " "

660 660

" " West " " "

330 330

Feet from North Line of Section

" " East " " "

" " South " " "

660 660

" " West " " "

LEGEND

○ Location

☀ Gas Well

● Oil Well

☀ Gas-Distillate Well

○ or ○ Dry Hole

● Dry Showing Oil

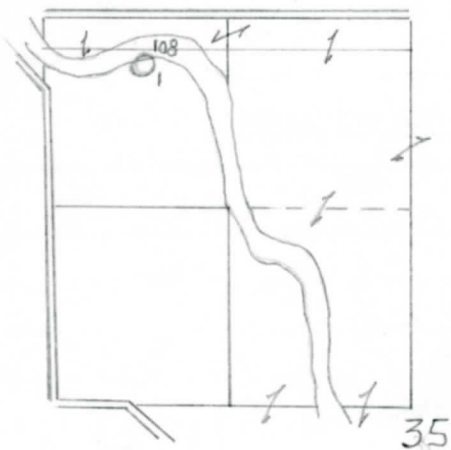
☀ Dry Showing Gas

⊗ Abandoned Location

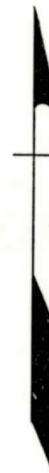
☀ or ⊗ Abandoned Gas Well

● or ● Abandoned Oil Well

⊗ or ⊗ Input Well



N



Remarks: _____ Scale _____

Submitted by _____ Civil Engineer Approved by _____ Division Manager

Approved by _____ Vice-President - General Manager

