



Western Michigan University  
ScholarWorks at WMU

---

Legacy Scout Tickets from Pure Oil Company

---

8-20-2021

**MGRRE\_PureOilScoutTickets\_Davidson,  
George\_1\_21017096960000**

MGRRE  
*Western Michigan University*

Follow this and additional works at: <https://scholarworks.wmich.edu/pure>



Part of the Geology Commons

---

#### WMU ScholarWorks Citation

MGRRE, "MGRRE\_PureOilScoutTickets\_Davidson, George\_1\_21017096960000" (2021). *Legacy Scout Tickets from Pure Oil Company*. 771.  
<https://scholarworks.wmich.edu/pure/771>

This Document is brought to you for free and open access via ScholarWorks at WMU. It has been accepted for inclusion in Legacy Scout Tickets from Pure Oil Company by an authorized administrator of ScholarWorks at WMU. See the National Digital Catalogue - Science Base Catalogue for more collections submitted by MGRRE.



---

**MGRRE\_PureOilScoutTickets\_Davidson, George\_1\_21017096960000**

API 21017096960000

Permit Number 9696

Lease Name Davidson, George

Well Number 1

County Bay

Township 15N

Range 04E

Section 33

2021 DEQ or Pure co\_name Muskegon Development Company

Pure Number 113

Latitude 43.6611353

Longitude -83.9917671

THE PURE OIL COMPANY  
OPERATORS

113  
Serial No. 113

Date July 29, 1942

LOCATION REPORT

A.F.E. No. \_\_\_\_\_

Division Michigan Producing District \_\_\_\_\_ Lease George Davidson

Acres \_\_\_\_\_ Lease No. \_\_\_\_\_ Elevation \_\_\_\_\_ Well No. 1 (Serial No. 113)

Quadrangle C 5 1/2 SE NE Sec. 33 Twp. 15-N Rge. 4-E Twp. Kawkawlin

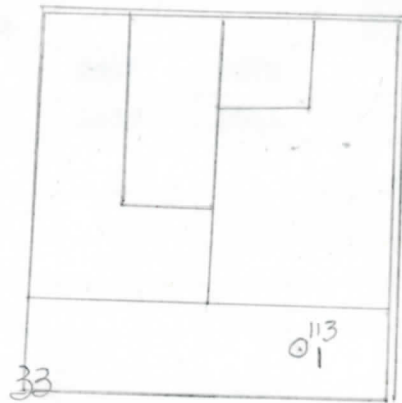
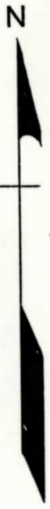
Survey \_\_\_\_\_ County Bay State Michigan

Operator Gulf Ref Co Map Kawkawlin Township, Bay County

Feet from North Line of Lease			
660	660	"	"
330	330	"	"
660	660	"	"
Feet from North Line of Section			
660	660	"	"
330	330	"	"

LEGEND

- Location
- ☀ Gas Well
- Oil Well
- ☀ Gas - Distillate Well
- ⊘ or ○ Dry Hole
- Dry Showing Oil
- ☀ Dry Showing Gas
- ⊘ Abandoned Location
- ☀ or ☀ Abandoned Gas Well
- or ● Abandoned Oil Well
- or ○ Input Well



Scale \_\_\_\_\_

Remarks: \_\_\_\_\_  
\_\_\_\_\_  
\_\_\_\_\_

Submitted by \_\_\_\_\_  
Civil Engineer

Approved by \_\_\_\_\_  
Division Manager

Approved by \_\_\_\_\_  
Vice-President - General Manager

