



Western Michigan University  
ScholarWorks at WMU

---

Legacy Scout Tickets from Pure Oil Company

---

8-20-2021

**MGRRE\_PureOilScoutTickets\_Blohm, Herman  
J\_1\_21017097340000**

MGRRE  
*Western Michigan University*

Follow this and additional works at: <https://scholarworks.wmich.edu/pure>



Part of the Geology Commons

---

#### **WMU ScholarWorks Citation**

MGRRE, "MGRRE\_PureOilScoutTickets\_Blohm, Herman J\_1\_21017097340000" (2021). *Legacy Scout Tickets from Pure Oil Company*. 775.

<https://scholarworks.wmich.edu/pure/775>

This Document is brought to you for free and open access via ScholarWorks at WMU. It has been accepted for inclusion in Legacy Scout Tickets from Pure Oil Company by an authorized administrator of ScholarWorks at WMU. See the National Digital Catalogue - Science Base Catalogue for more collections submitted by MGRRE.



---

**MGRRE\_PureOilScoutTickets\_Blohm, Herman J\_1\_21017097340000**

API 21017097340000

Permit Number 9734

Lease Name Blohm, Herman J

Well Number 1

County Bay

Township 15N

Range 04E

Section 28

2021 DEQ or Pure co\_name Muskegon Development Company

Pure Number 117

Latitude 43.6718947

Longitude -84.0013706

Date August 19, 1942 LOCATION REPORT A.F.E. No. \_\_\_\_\_

Division Mich. Producing District \_\_\_\_\_ Lease Herman J. Blohm

Acres \_\_\_\_\_ Lease No. \_\_\_\_\_ Elevation \_\_\_\_\_ Well No. 1 (Serial No. 117)

Quadrangle C S 1/2 NE SW Sec. 28 Twp. 15 N Rge. 4 E Twp. Kawkawlin

Survey \_\_\_\_\_ County Bay State Michigan

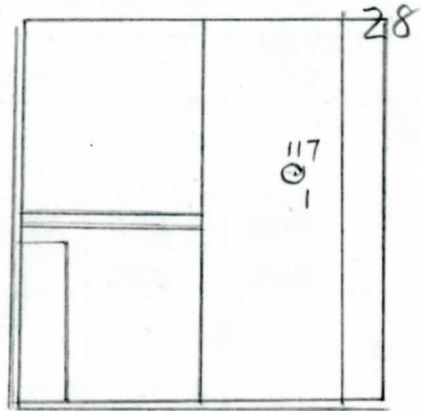
Operator Gulf Refining Company Map Kawkawlin Township, Bay County

|          |     |     |                                 |
|----------|-----|-----|---------------------------------|
| Operator | 990 | 990 | Feet from North Line of Lease   |
|          | 660 | 660 | " " East " " "                  |
|          |     |     | " " South " " "                 |
|          | 660 | 660 | " " West " " "                  |
|          | 990 | 990 | Feet from North Line of Section |
|          | 660 | 660 | " " East " " "                  |
|          |     |     | " " South " " "                 |
|          |     |     | " " West " " "                  |

*Run*

LEGEND

- Location
- ☀ Gas Well
- Oil Well
- ☀ Gas - Distillate Well
- or ○ Dry Hole
- Dry Showing Oil
- ☀ Dry Showing Gas
- ⊗ Abandoned Location
- ☀ or ☀ Abandoned Gas Well
- or ● Abandoned Oil Well
- or ○ Input Well



Scale \_\_\_\_\_

Remarks: \_\_\_\_\_

Submitted by W \_\_\_\_\_ Civil Engineer Approved by \_\_\_\_\_ Division Manager

Approved by \_\_\_\_\_ Vice-President - General Manager

Michigan Producing Division

Date 10-14-42 No. 117  
 State Mich. County Bay ~~XXXXX~~ Twp. Kawkawlin Sec. 28 Twp. 15 N Rge. 4 E  
 Well No. 1 (Serial No.) 117 (County No.) 117 Farm Herman J. Blohm Acres \_\_\_\_\_  
 Operator Gulf Refining Company Information secured ~~from~~ By Scouting Department  
 Date well started 8-17-42 Date well completed 9-26-42 Elevation 605.6

PRODUCTION RECORD

1st 24 hours natural Filled up 400 ft.  
 2nd 24 hours natural \_\_\_\_\_  
 Date of shot \_\_\_\_\_ No. of quarts \_\_\_\_\_ From \_\_\_\_\_ to \_\_\_\_\_ From \_\_\_\_\_ to \_\_\_\_\_  
 Date of acid 10-4-42 No. of gallons 1000  
 1st 24 hours after acid ~~shot~~ 60 Barrels (Pumped)  
 2nd 24 hours after acid \_\_\_\_\_

FORMATION AND CASING RECORD

| Formation     | Top  | Bottom | Top Pay | Bottom Pay | Remarks                             | Casing |        |
|---------------|------|--------|---------|------------|-------------------------------------|--------|--------|
|               |      |        |         |            |                                     | Size   | Set at |
| Berea         | 1610 |        |         |            | 1 bailer salt water from 1610-1620. | 10"    | 126    |
| Traverse Lime | 2120 |        |         |            |                                     | 8-1/4" | 786    |
| Dundee        | 2810 | S.L.M. | 2871    | 2897       |                                     | 6-5/8" | 2823   |
|               |      |        | 2904    | 2947       |                                     |        |        |
| Total Depth   |      | 2947   |         |            |                                     |        |        |
|               |      |        |         |            |                                     |        |        |
|               |      |        |         |            |                                     |        |        |
|               |      |        |         |            |                                     |        |        |
|               |      |        |         |            |                                     |        |        |
|               |      |        |         |            |                                     |        |        |
|               |      |        |         |            |                                     |        |        |
|               |      |        |         |            |                                     |        |        |
|               |      |        |         |            |                                     |        |        |
|               |      |        |         |            |                                     |        |        |
|               |      |        |         |            |                                     |        |        |

Remarks \_\_\_\_\_  
 \_\_\_\_\_  
 \_\_\_\_\_  
 \_\_\_\_\_

Signed D. C. Shackelford